

LOC I-GGG 109.5	APP CRS 131°	Rwy Idg 9200
		TDZE 358
		Apt Elev 366

ILS or LOC RWY 13

EAST TEXAS RGNL (GGG)

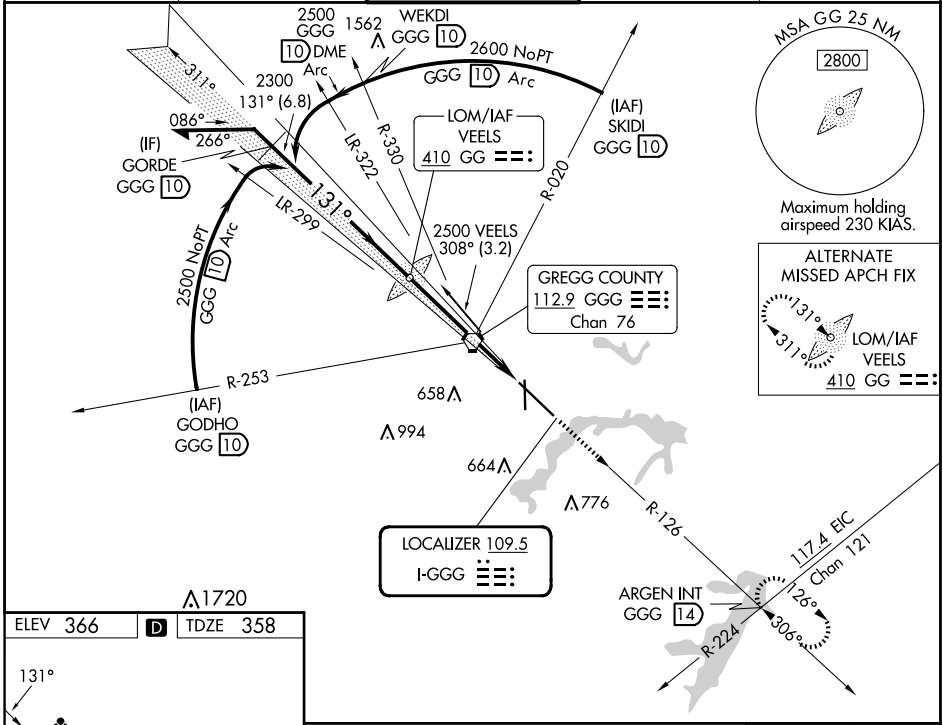
ADF or DME required for procedure entry.

▼ For inop ALS, increase S-ILS 13 Cat E visibility to RVR 4000, S-LOC 13 Cat C/D/E visibility to 1 3/8 SM. When local altimeter setting not received use Gilmer altimeter setting and **▲** increase DA 59 feet, all MDA 60 feet, increase LOC and Circling Cat C/D/E visibility 1/4 SM. For inop ALS when using Gilmer altimeter setting increase S-ILS 13 all Cats to RVR 4500, S-LOC 13 Cat C/D/E visibility to 1 3/8 SM. * RVR 1800 authorized with the use of FD or AP or HUD to DA (NA when using Gilmer altimeter setting).

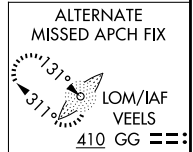


MISSED APPROACH:
Climb to 3000 via GGG VORTAC R-126 to ARGEN Int/GGG 14 DME and hold.

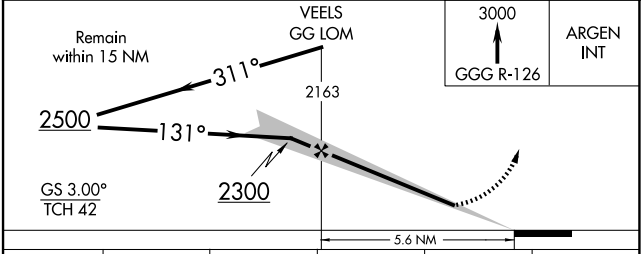
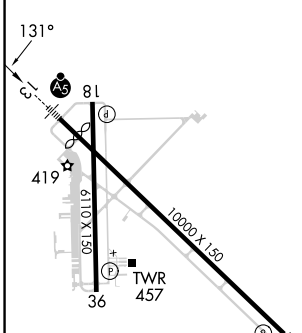
ATIS 119.65	LONGVIEW APP CON * 124.675 257.975	EASTEX TOWER * 119.2 (CTAF) 0377.05	GND CON 121.6	UNICOM 122.95
-----------------------	--	---	-------------------------	-------------------------



Maximum holding
airspeed 230 KIAS.



ELEV 366	D	TDZE 358
----------	----------	----------



CATEGORY	A	B	C	D	E
S-ILS 13	*558/24 200 (200-1/2)				558/24 200 (200-1/2)
S-LOC 13	860/24	502 (500-1/2)	860/50	502 (500-1)	860/60 502 (500-1/4)
CIRCLING	860-1	494 (500-1)	980-1 3/4 614 (700-1 3/4)	1080-2 1/4 714 (800-2 1/4)	1080-2 1/2 714 (800-2 1/2)

SC-2, 15 MAY 2025 to 12 JUN 2025

SC-2, 15 MAY 2025 to 12 JUN 2025