

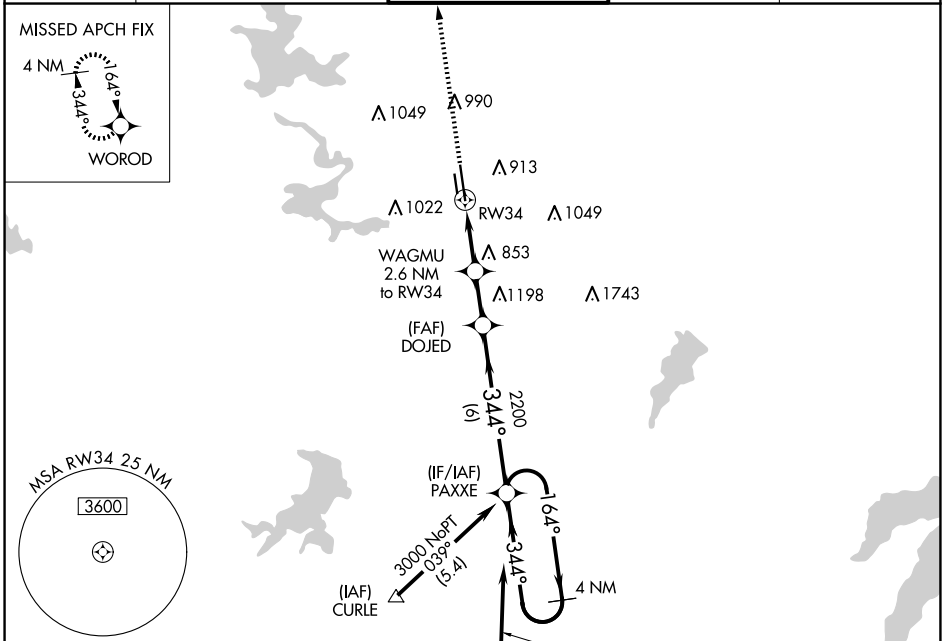
WAAS CH 53412 W34A	APP CRS 344°	Rwy Idg 7455 TDZE 680 Apt Elev 710
--	------------------------	---

RNAV (GPS) RWY 34

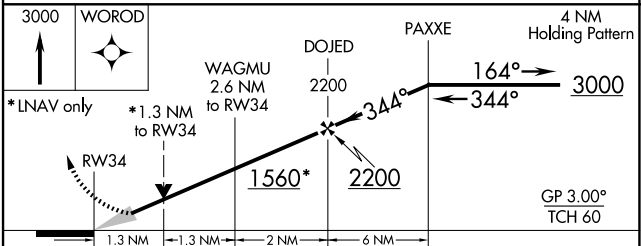
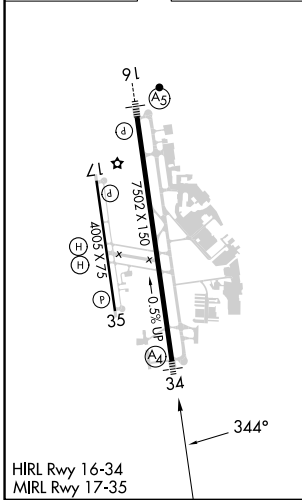
FORT WORTH MEACHAM INTL (FTW)

<p>⚠ For uncompensated Baro-VNAV systems, LNAV/VNAV NA below -5°C (23°F) or above 54°C (130°F). DME/DME RNP-0.3 NA. For inop MALS, increase LNAV/VNAV Cat D and LNAV Cat D visibility to 1½ mile.</p>	<p>MALS (A) </p>	<p>MISSED APPROACH: Climb to 3000 direct WOROD and hold.</p>
--	-----------------------------	--

<p>ATIS 120.7</p>	<p>LONE STAR APP CON (North) 118.1 306.95 (South) 135.975 379.9</p>	<p>MEACHAM TOWER 118.3 257.8</p>	<p>GND CON 121.9</p>	<p>CLNC DEL 124.65</p>
------------------------------	---	---	---------------------------------	-----------------------------------



ELEV 710	D	TDZE 680
----------	----------	----------



CATEGORY	A	B	C	D
LPV DA		880-¾	200 (200-¾)	
LNAV/VNAV DA		1091-1½	411 (400-1½)	
LNAV MDA	1160-¾	480 (500-¾)	1160-1½	480 (500-1½)
C CIRCLING	1260-1 550 (600-1)	1280-1 570 (600-1)	1340-1¾ 630 (700-1¾)	1500-2½ 790 (800-2½)

SC-2, 15 MAY 2025 to 12 JUN 2025

SC-2, 15 MAY 2025 to 12 JUN 2025