

APP CRS  
**347°**

Rwy Idg **3084**  
 TDZE **574**  
 Apt Elev **574**

# RNAV (GPS) RWY 35

RALPH M HALL/ROCKWALL MUNI (F46)

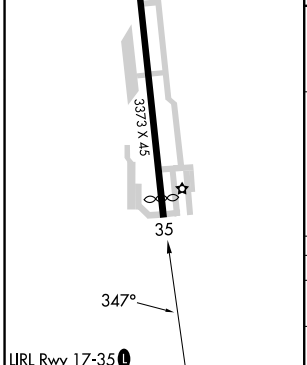
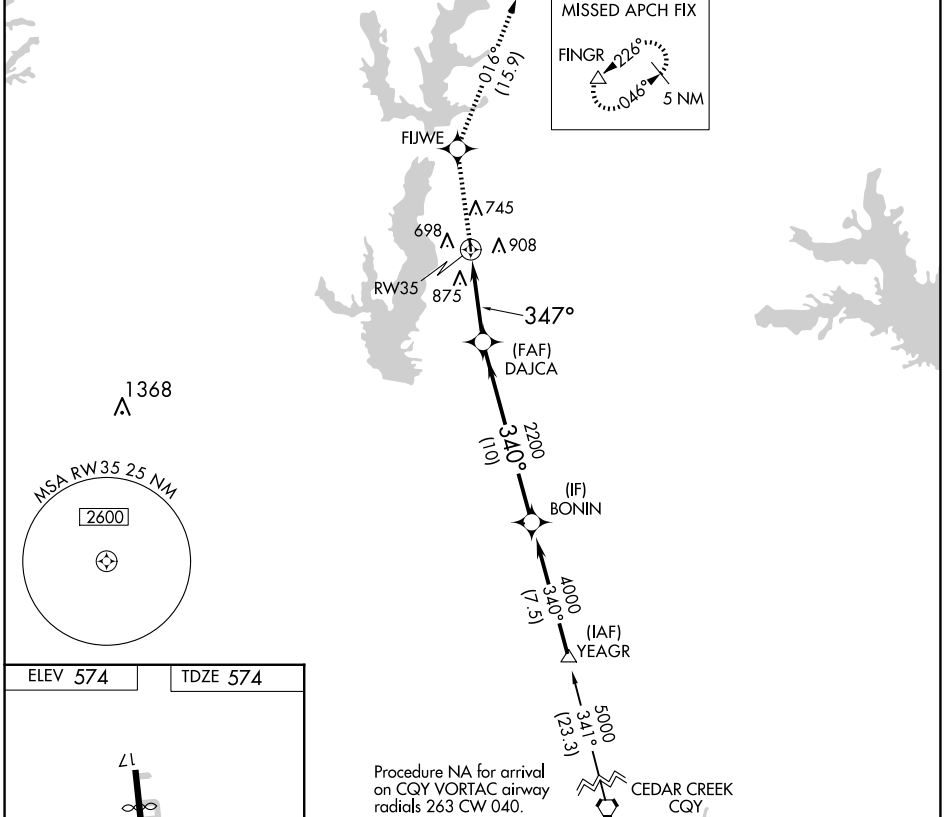
**▼** DME/DME RNP-0.3 NA. When local altimeter setting not received, use Dallas Love Fld altimeter setting and increase all MDA 80 feet.  
**▲** Helicopter visibility reduction below 1 SM NA. Procedure NA at night.

MISSED APPROACH: Climb to 5000 direct FIJWE and on track 016° to FINGR and hold.

AWOS-3PT  
**121.25**

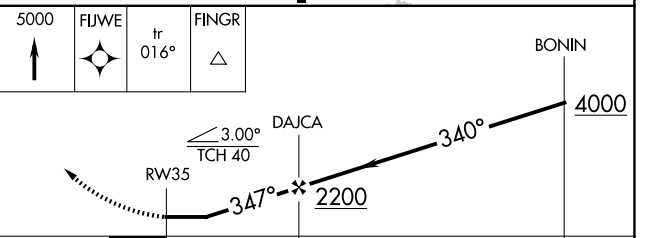
LONE STAR APP CON  
**124.3 282.275**

UNICOM  
**122.8 (CTAF) ①**



ELEV 574 TDZE 574

ROCKWALL, TEXAS  
 Orig-C 30APR15



CATEGORY	A	B	C	D
LNAV MDA	1200-1	626 (700-1)	NA	
CIRCLING	1280-1	706 (800-1)	NA	

SC-2, 15 MAY 2025 to 12 JUN 2025

SC-2, 15 MAY 2025 to 12 JUN 2025