

APP CRS <b>167°</b>	Rwly Idg <b>2901</b>
	TDZE <b>574</b>
	Apt Elev <b>574</b>

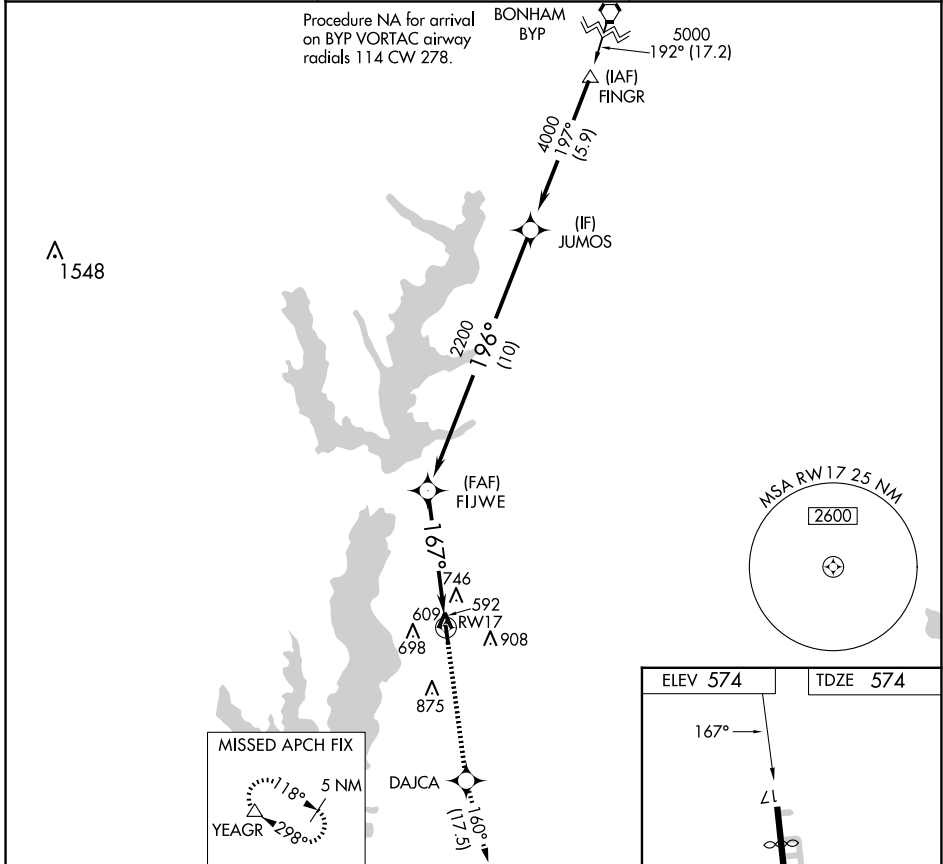
# RNAV (GPS) RWY 17

RALPH M HALL/ROCKWALL MUNI (F46)

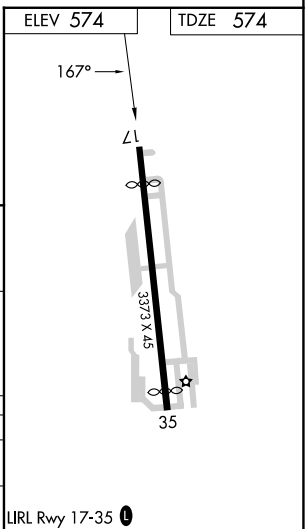
**⚠** DME/DME RNP-0.3 NA. When local altimeter setting not received, use Dallas Love Fld altimeter setting and increase all MDA 80 feet. Helicopter visibility reduction below 1 SM NA. Procedure NA at night.

**MISSED APPROACH:** Climb to 5000 direct DAJCA and on track 160° to YEAGR and hold.

AWOS-3PT <b>121.25</b>	LONE STAR APP CON <b>124.3 282.275</b>	UNICOM <b>122.8 (CTAF) 0</b>
---------------------------	---	---------------------------------



JUMOS	5000	DAJCA	tr 160°	YEAGR
4000	↑	✧		△
	FIJWE	3.00°	TCH 40 RW17	
	2200	✧	167°	
10 NM		5 NM		
CATEGORY	A	B	C	D
LNAV MDA	1140-1	566 (600-1)	NA	
CIRCLING	1280-1	706 (800-1)	NA	



SC-2, 15 MAY 2025 to 12 JUN 2025

SC-2, 15 MAY 2025 to 12 JUN 2025