
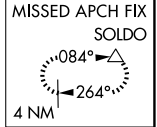
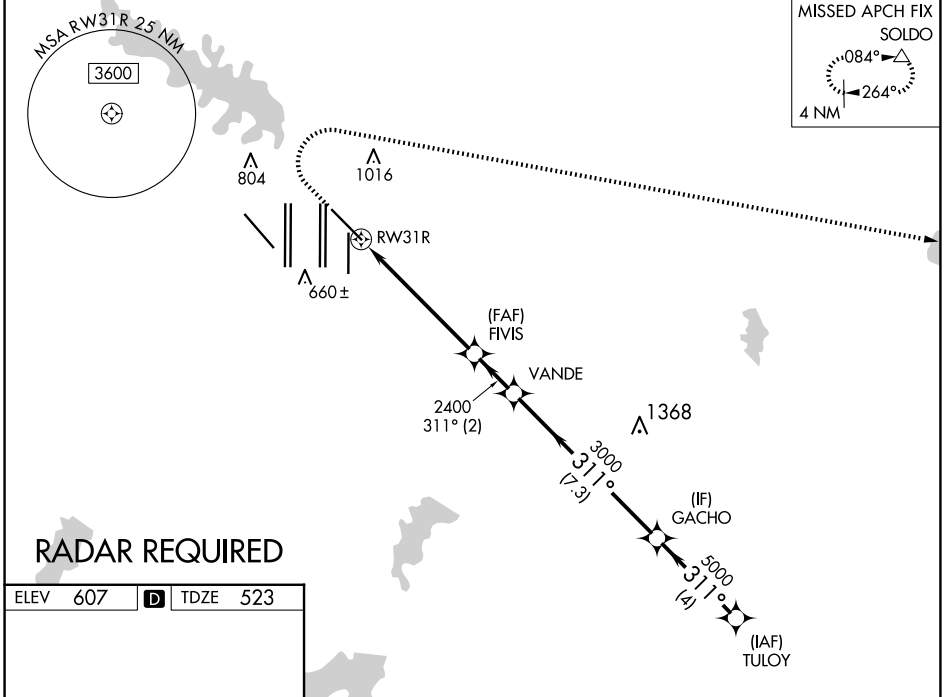


APP CRS 311°	Rwy Idg TDZE Apt Elev	8373 523 607
------------------------	-----------------------------	---

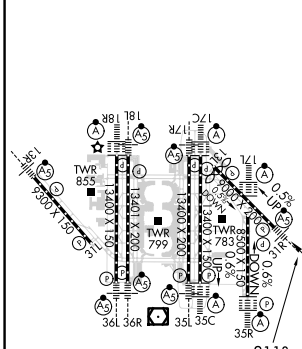
RNAV (RNP) Z RWY 31R

DALLAS-FORT WORTH INTL (DFW)

<p>▼ For uncompensated Baro-VNAV systems, procedure NA below -4°C (25°F) or above 54°C (130°F). For inop MALSR, increase RNP 0.14 all Cats visibility to RVR 5100, RNP 0.23 all Cats visibility to 1½ mile, RNP 0.30 all Cats visibility to 1½ mile. Simultaneous approach authorized with Rwy 31L. GPS Required. Use of FD or AP providing RNAV track guidance required during simultaneous operations.</p>		<p>MALSR</p> 	<p>MISSED APPROACH: Climb to 1100 then climbing right turn to 3000 direct SOLDO and hold.</p>		
D-ATIS ARR 123.775 DEP 135.925	LONE STAR APP CON 135.5 125.2	DFW TOWER 126.55 127.5 EAST 124.15 134.9 WEST	GND CON 121.65 121.8 EAST 121.85 WEST	CLNC DEL 128.25	CPDLC



ELEV 607	D	TDZE 523
----------	----------	----------



1100	3000	SOLDO	VGSI and RNAV glidepath not coincident (VGSI Angle 3.00/TCH 69).	
↑	↷	△	GACHO	TULYO
RWY 31R		FIVIS	VANDE	311°
2400		2400	3000	5000
5.8 NM		2 NM	7.3 NM	4 NM
GP 3.00°	TCH 53			
CATEGORY	A	B	C	D
RNP 0.14 DA		838/27	315 (300-5%)	
RNP 0.23 DA		928/44	405 (400-7%)	
RNP 0.30 DA		987/55	464 (400-1)	

AUTHORIZATION REQUIRED

SC-2, 15 MAY 2025 to 12 JUN 2025

SC-2, 15 MAY 2025 to 12 JUN 2025