

WAAS CH 87005 W36A	APP CRS 356°	Rwy Idg 13401 TDZE 581 Apt Elev 607
--	------------------------	--

RNAV (GPS) RWY 36R

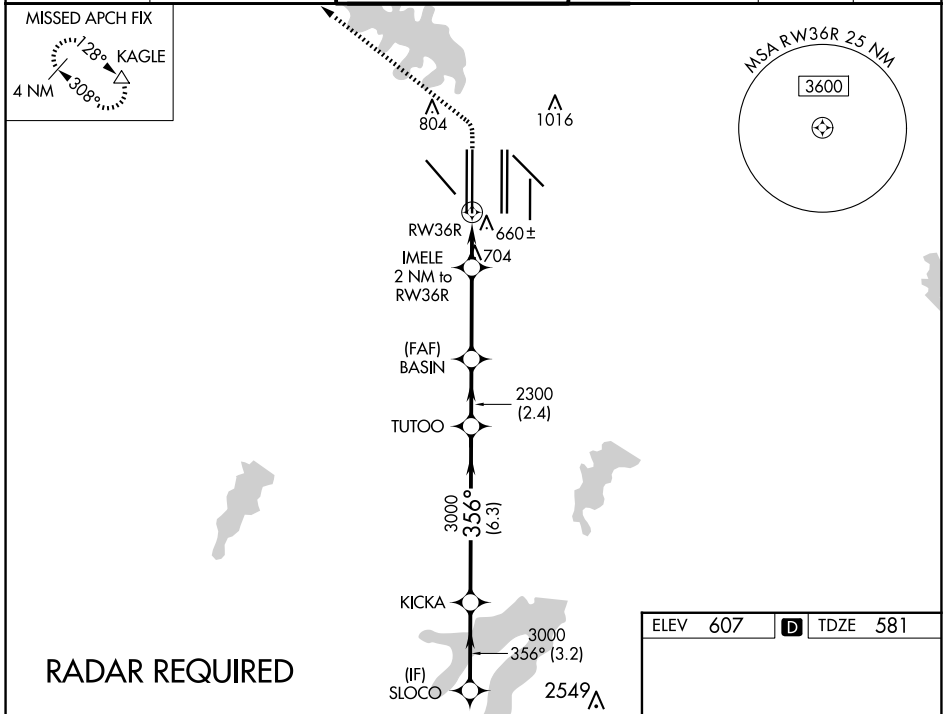
DALLAS-FORT WORTH INTL (DFW)

▽ For uncompensated Baro-VNAV systems, LNAV/VNAV NA below -4°C (25°F) or above 54°C (130°F). For inop MALSRS, increase LNAV Cats C/D visibility to RVR 5500. Simultaneous approach authorized with Rwy 35L/C/R. DME/DME RNP-0.3 NA. LNAV procedure NA during simultaneous operations. Use of FD or AP providing RNAV track guidance required during simultaneous operations.



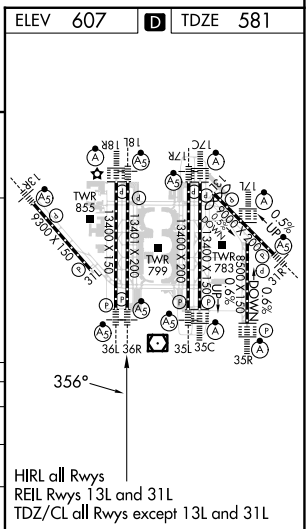
MISSED APPROACH: Climb to 1100 then climbing left turn to 3000 direct KAGLE and hold.

D-ATIS ARR 123.775 DEP 135.925	LONE STAR APP CON 118.425	DFW TOWER 126.55 127.5 EAST 124.15 134.9 WEST	GND CON 121.65 121.8 EAST 121.85 WEST	CLNC DEL 128.25	CPDLC
--	-------------------------------------	---	---	---------------------------	-------



VGSI and RNAV glidepath not coincident (VGSI Angle 3.00/TCH 66).

	SLOCO	KICKA	TUTOO	BASIN	IMELE 2 NM to RW36R	RW36R
GP 3.00° TCH 50	4000	3000	3000	2300	*1260	
	3.2 NM	6.3 NM	2.4 NM	3.3 NM	1 NM	1 NM
CATEGORY	A	B	C	D		
LPV DA		781/18	200 (200-½)			
LNAV/VNAV DA		941/40	360 (400-¾)			
LNAV MDA	960/24	379 (400-½)	960/35	379 (400-⅝)		



SC-2, 15 MAY 2025 to 12 JUN 2025

SC-2, 15 MAY 2025 to 12 JUN 2025