

RNAV (GPS) Y RWY 31R

DALLAS LOVE FLD (DAL)

WAAS CH 87123 W31B	APP CRS 313°	Rwy Idg 6952 TDZE 487 Apt Elev 487
--	------------------------	---

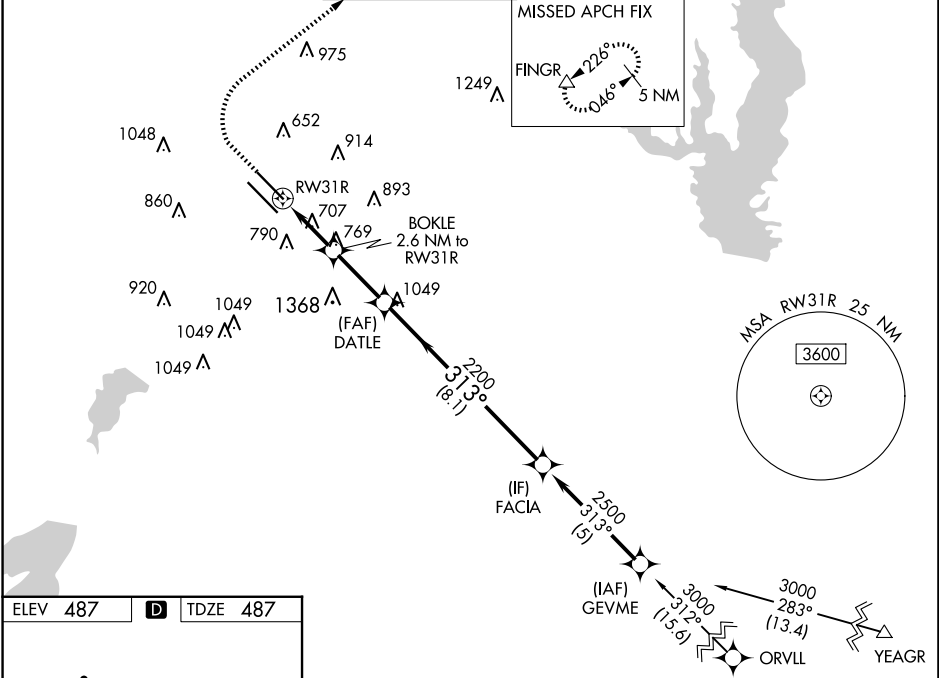
RNP APCH-GPS

Simultaneous approach authorized. For uncompensated Baro-VNAV systems, LNAV/VNAV NA below -6°C or above 54°C. LNAV procedure NA during simultaneous operations. Use of FD or AP providing RNAV track guidance required during simultaneous operations. For inop ALS, increase LNAV visibility Cat C/D to 1½ SM. **RVR 1800 authorized with use of FD or AP or HUD to DA.

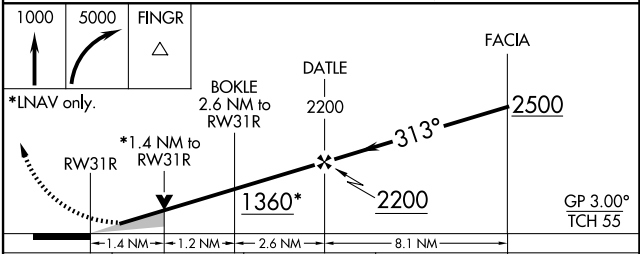
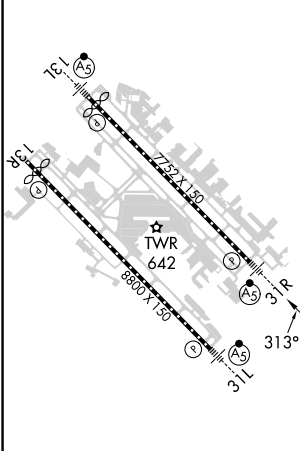
MALSRL

MISSED APPROACH:
Climb to 1000 then climbing right turn to 5000 direct FINGR and hold.

D-ATIS 120.15	LONE STAR APP CON NORTH 124.3 282.275 SOUTH 125.2 343.65	LOVE TOWER 123.7 239.3	GND CON 121.75 348.6	CLNC DEL 127.9	CPDLC
-------------------------	--	----------------------------------	--------------------------------	--------------------------	-------



ELEV 487	D	TDZE 487
-----------------	----------	-----------------



CATEGORY	A	B	C	D
LPV DA **		687/24	200 (200-½)	
LNAV/VNAV DA		873/35	386 (400-¾)	
LNAV MDA	980/24	493 (500-½)	980/50	493 (500-1)
C CIRCLING	1080-1 593 (600-1)	1140-1 653 (700-1)	1220-2 733 (800-2)	1520-3 1033 (1100-3)

TDZ/CL Rwy 13L and 31L
HIRL Rwy 13L-31R, and 13R-31L

SC-2, 15 MAY 2025 to 12 JUN 2025

SC-2, 15 MAY 2025 to 12 JUN 2025