

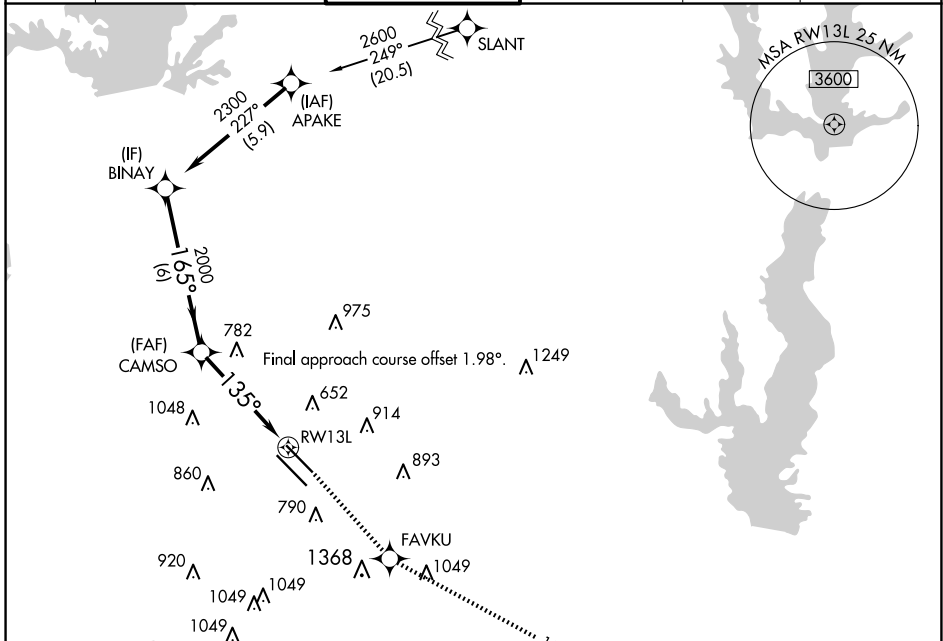
APP CRS 135°	Rwy Idg 7352
	TDZE 485
	Apt Elev 487

RNAV (GPS) Y RWY 13L

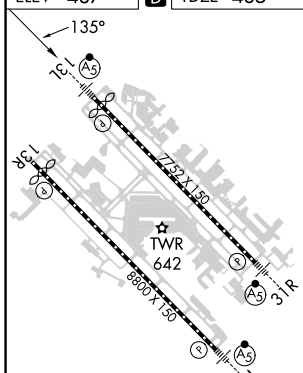
DALLAS LOVE FLD (DAL)

RNP APCH - GPS.	MALSR	MISSED APPROACH: Climb to 3000 direct FAVKU and on track 115° to DUMPY and hold.
<p>▼ For inop ALS, increase LNAV Cats C/D visibility to 1¾ SM.</p> <p>▲</p>		

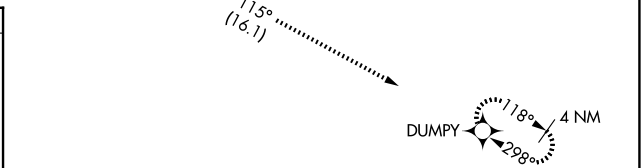
D-ATIS 120.15	LONE STAR APP CON NORTH 124.3 282.275 SOUTH 125.2 343.65	LOVE TOWER 123.7 239.3	GND CON 121.75 348.6	CLNC DEL 127.9	CPDLC
-------------------------	--	----------------------------------	--------------------------------	--------------------------	-------



ELEV 487	D	TDZE 485
-----------------	----------	-----------------



TDZ/CL Rwy 13L and 31L	HIRL Rwy 13L-31R, and 13R-31L
------------------------	-------------------------------



BINAY	CAMSO	FAVKU	DUMPY
2300	2000	3000	tr 115°
6 NM	2.9 NM	1.8 NM to RWY 13L	4 NM

CATEGORY	A	B	C	D
LNAV MDA	1100/24	615 (700-½)	1100-1⅓	615 (700-1⅓)
C CIRCLING	1100-1 613 (700-1)	1140-1 653 (700-1)	1220-2 733 (800-2)	1520-3 1033 (1100-3)

SC-2, 15 MAY 2025 to 12 JUN 2025

SC-2, 15 MAY 2025 to 12 JUN 2025