

# ILS or LOC RWY 31R

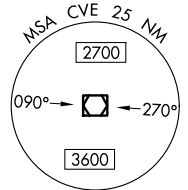
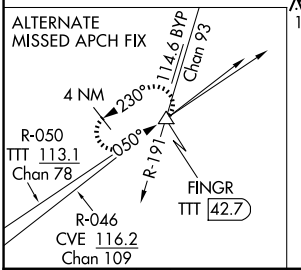
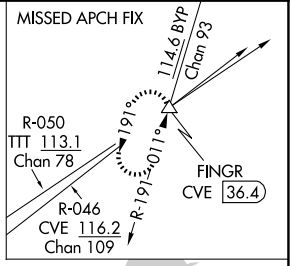
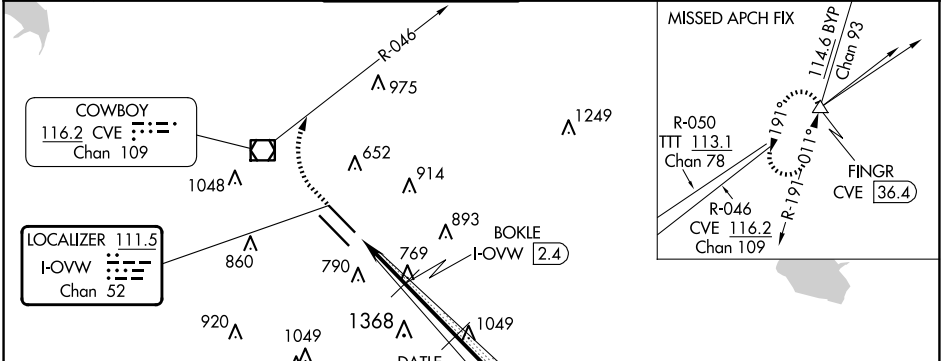
DALLAS LOVE FLD (DAL)

LOC/DME I-OVW <b>111.5</b> Chan 52	APP CRS <b>313°</b>	Rwy Idg TDZE Apt Elev <b>6952</b> <b>487</b> <b>487</b>
--	------------------------	--

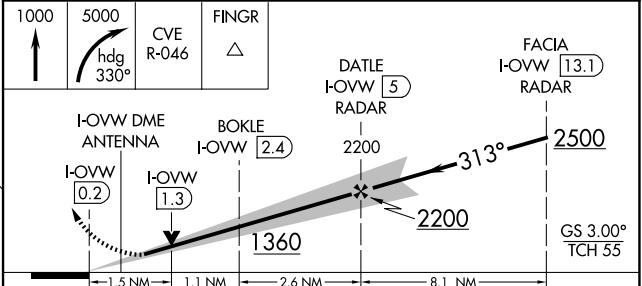
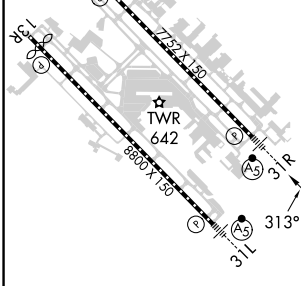
DME required.  
RADAR required for procedure entry.  
 ⚠ Simultaneous approach authorized.  
 \*\* RVR 1800 authorized with use of FD or AP or HUD to DA.

MALS R  
 MISSED APPROACH: Climb to 1000 then climbing right turn to 5000 on heading 330° and CVE VOR/DME R-046 to FINGR INT/CVE 36.4 DME and hold.

D-ATIS <b>120.15</b>	LONE STAR APP CON NORTH <b>124.3 282.275</b> SOUTH <b>125.2 343.65</b>	LOVE TOWER <b>123.7 239.3</b>	GND CON <b>121.75 348.6</b>	CLNC DEL <b>127.9</b>	CPDLC
-------------------------	--	----------------------------------	--------------------------------	--------------------------	-------



ELEV <b>487</b>	<b>D</b>	TDZE <b>487</b>
-----------------	----------	-----------------



TDZ/CL Rwys 13L and 31L	TDZ/CL Rwys 13R and 31R	TDZ/CL Rwys 13L-31R and 13R-31L				
FAF to MAP 5.2 NM						
Knots	60	90	120	150	180	
Min:Sec	5:12	3:28	2:36	2:05	1:44	
CATEGORY	A		B		C	D
S-ILS 31R **	687/24					200 (200-½)
S-LOC 31R	1020/24	533 (600-½)	1020/55	533 (600-1)		
ⓐ CIRCLING	1020-1	533 (600-1)	1140-1	653 (700-1)	1220-2	733 (800-2)
					1520-3	1033 (1100-3)

SC-2, 15 MAY 2025 to 12 JUN 2025

SC-2, 15 MAY 2025 to 12 JUN 2025