

KUSSO ONE DEPARTURE (RNAV)

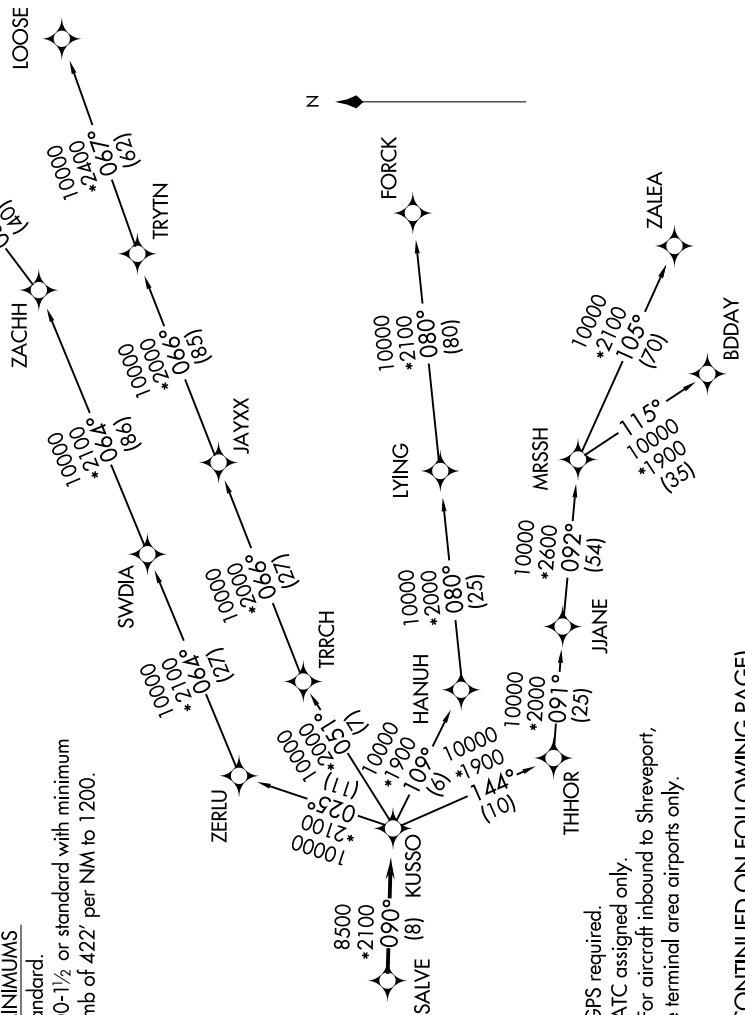
SC-2, 15 MAY 2025 to 12 JUN 2025

**TOP ALTITUDE:
ASSIGNED BY ATC**

TAKEOFF MINIMUMS

Rwy 15: Standard.
Rwy 33: 300-1½ or standard with minimum
climb of 422' per NM to 1200.

LONE STAR DEP CON
135.975 379.9
CTAF
122.8



NOTE: Chart not to scale.

(CONTINUED ON FOLLOWING PAGE)

SC-2, 15 MAY 2025 to 12 JUN 2025

KUSSO ONE DEPARTURE (RNAV)