



VORTAC BGS 117.2 Chan 119	APP CRS 180°	Rwy Idg 8803 TDZE 2562 Apt Elev 2573
---	------------------------	---

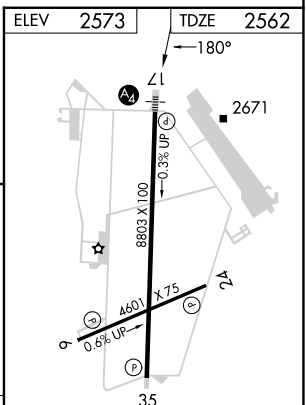
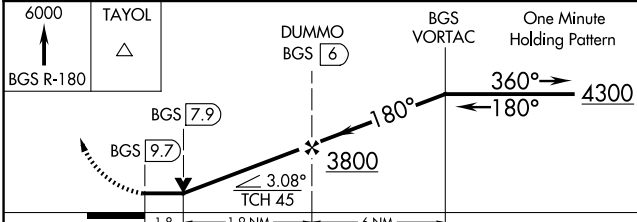
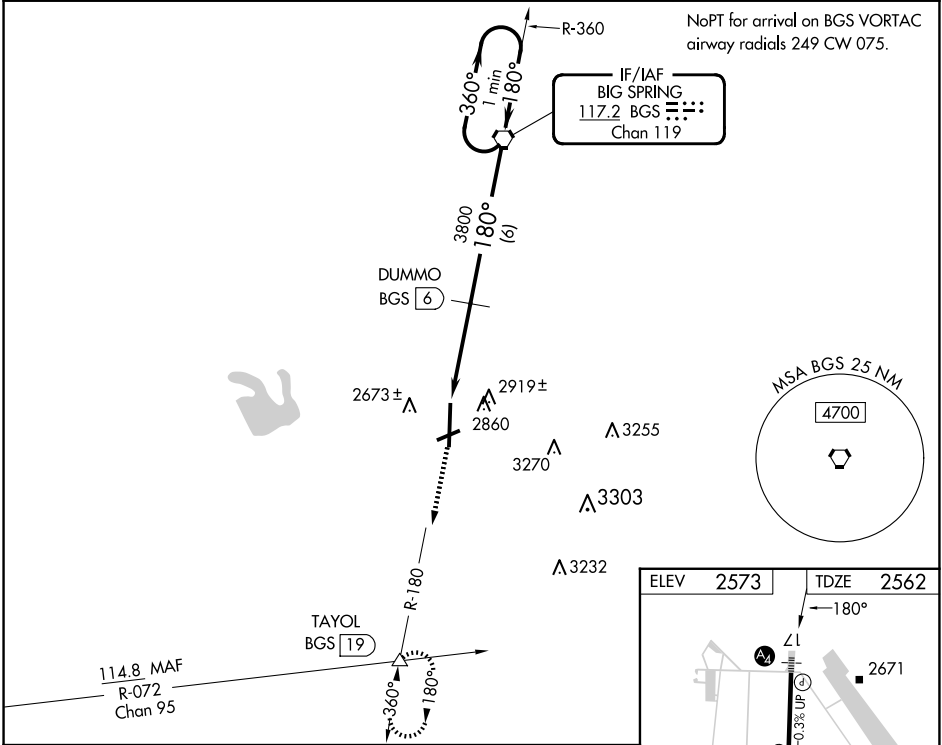
VOR/DME RWY 17


BIG SPRING/MC MAHON-WRINKLE (BPG)

⚠ When VGSi inoperative, circling Rwy 6 NA at night. Circling NA east of Rwy 17-35. Inoperative table does not apply to S-17 Cat C, when using Midland Intl Air and Space Port altimeter setting inoperative table does not apply to S-17 Cat B. VDP NA when using Midland Intl Air and Space Port altimeter setting. When local altimeter setting not received, use Midland Intl Air and Space Port altimeter setting and increase all MDA 140 feet, increase S-17 Cats B, C, and D and Circling Cats C and D visibility 1/2 mile, Circling Cat B visibility 1/4 mile.

SSALS
 MISSED APPROACH: Climb to 6000 via BGS VORTAC R-180 to TAYOL INT/BGS 19 DME and hold, continue climb-in-hold to 6000.

AWOS-3PT 118.025	FORT WORTH CENTER 133.7 350.2	UNICOM 122.8 (CTAF) 
----------------------------	---	---



CATEGORY	A	B	C	D
S-17	3180-3/4 618 (700-3/4)		3180-1 3/4 618 (700-1 3/4)	3180-2 618 (700-1)
 CIRCLING	3180-1 607 (700-1)		3180-1 3/4 607 (700-1 3/4)	3180-2 607 (700-2)

MIRL Rwy 6-24 and 17-35 

SC-2, 15 MAY 2025 to 12 JUN 2025

SC-2, 15 MAY 2025 to 12 JUN 2025