

WAAS CH 99418 W35A	APP CRS 355°	Rwy Idg TDZE Apt Elev	8803 2563 2573
--	------------------------	-----------------------------	---

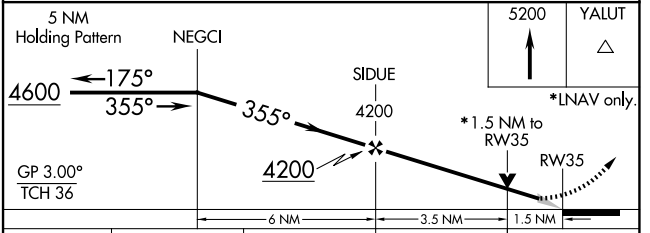
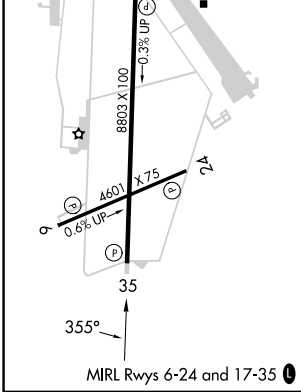
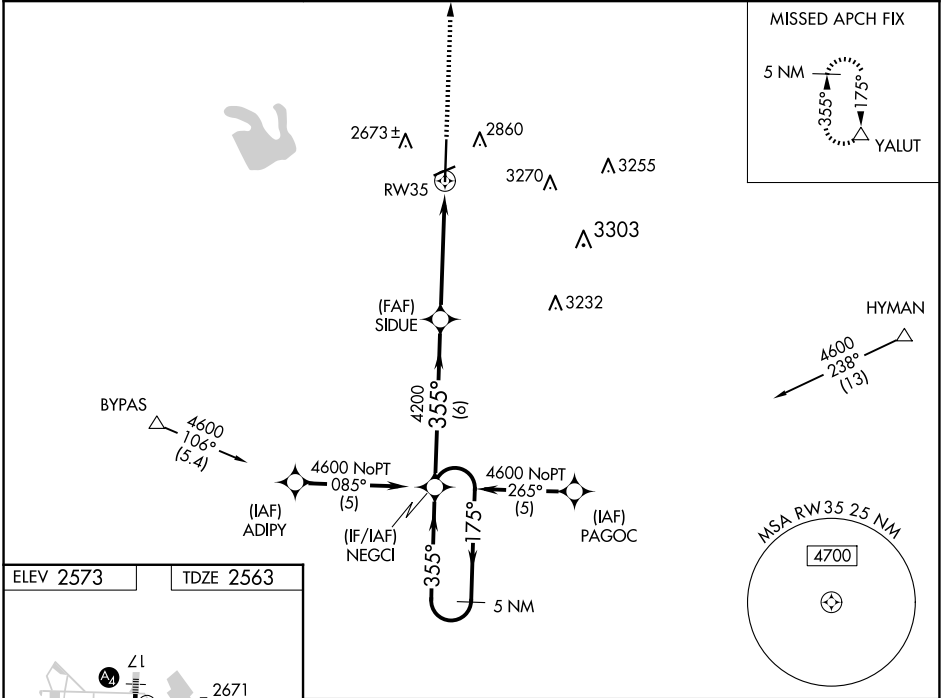
RNAV (GPS) RWY 35
BIG SPRING/MC MAHON-WRINKLE (BPG)

RNP APCH.

⚠ Baro-VNAV NA when using Midland Intl Air and Space Port altimeter setting. For uncompensated Baro-VNAV systems, LNAV/VNAV NA below -20°C or above 43°C. VDP NA with Midland Intl Air and Space Port altimeter setting. When local altimeter setting not received, use Midland Intl Air and Space Port altimeter setting: increase all DA 130 feet and all MDA 140 feet; increase LPV all Cats visibility ¼ SM, LNAV/VNAV all Cats visibility ½ SM and LNAV Cat C and D visibility ½ SM.

MISSED APPROACH: Climb to 5200 direct YALUT and hold.

AWOS-3PT 118.025	FORT WORTH CENTER 133.7 350.2	UNICOM 122.8 (CTAF) 0
----------------------------	---	---------------------------------



CATEGORY	A	B	C	D
LPV DA	2813-1 250 (300-1)			
LNAV/VNAV DA	2979-1½ 416 (500-1½)			
LNAV MDA	3060-1 497 (500-1)	3060-1¼ 497 (500-1¼)	3060-1½ 497 (500-1½)	3060-1½ 497 (500-1½)

SC-2, 15 MAY 2025 to 12 JUN 2025

SC-2, 15 MAY 2025 to 12 JUN 2025