

| | | | |
|--|------------------------|-----------------------------|---|
| WAAS CH 97618 W17A | APP CRS 175° | Rwy Idg TDZE Apt Elev | 8803 2562 2573 |
|--|------------------------|-----------------------------|---|

RNAV (GPS) RWY 17

BIG SPRING/MC MAHON-WRINKLE (BPG)

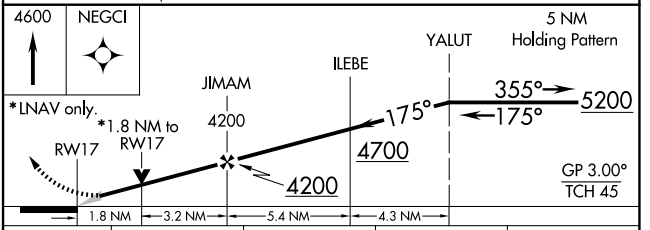
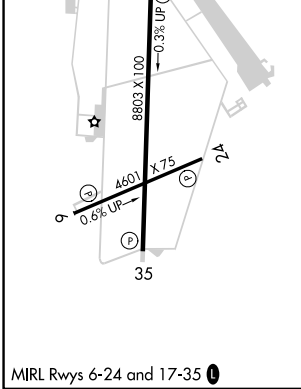
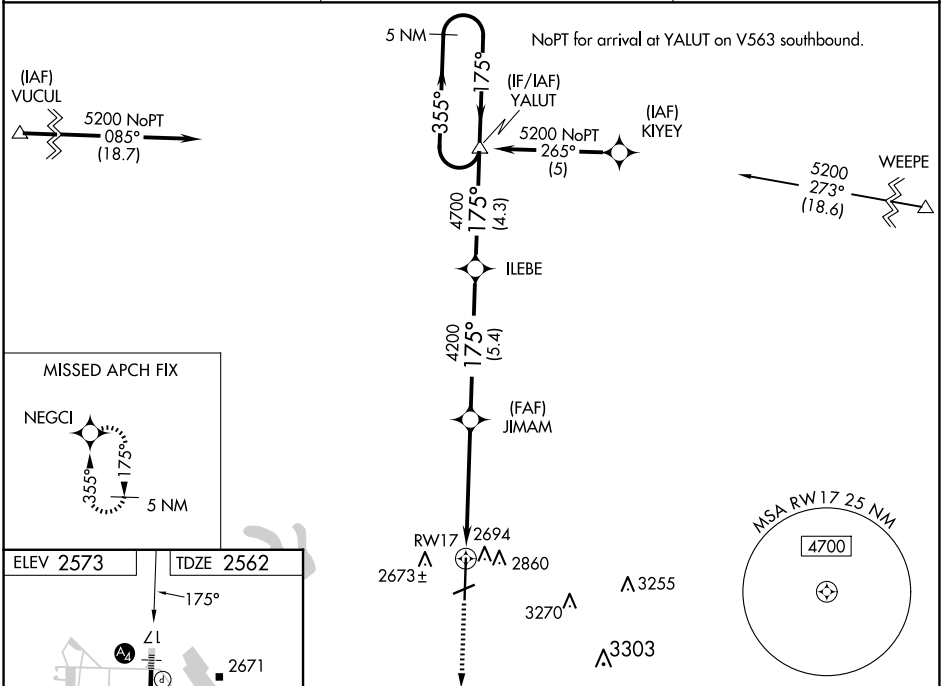
RNP APCH.

⚠ Inop table does not apply to LNAV/VNAV and LNAV Cat C. When local altimeter setting not received, use Midland Intl Air and Space Port altimeter setting: increase all DA 130 feet and all MDA 140 feet; increase LPV and LNAV/VNAV all Cats and LNAV Cat C and D visibility ½ SM. Baro-VNAV NA when using Midland Intl Air and Space Port altimeter setting. VDP NA with Midland Intl Air and Space Port altimeter setting. For uncompensated Baro-VNAV systems, LNAV/VNAV NA below -20°C or above 43°C.

SSALS

MISSED APPROACH: Climb to 4600 direct NEGCI and hold.

| | | |
|----------------------------|---|-------------------------------|
| AWOS-3PT 118.025 | FORT WORTH CENTER 133.7 350.2 | UNICOM 122.8 (CTAF) |
|----------------------------|---|-------------------------------|



| CATEGORY | A | B | C | D |
|--------------|----------------------|----------------------|----------------------|----------------------|
| LPV DA | 2812-1 250 (300-1) | | | |
| LNAV/VNAV DA | 3040-1¾ 478 (500-1¾) | | | |
| LNAV MDA | 3160-¾ 598 (600-¾) | 3160-1½ 598 (600-1½) | 3160-1¾ 598 (600-1¾) | 3160-1¾ 598 (600-1¾) |

SC-2, 15 MAY 2025 to 12 JUN 2025

SC-2, 15 MAY 2025 to 12 JUN 2025