

WAAS CH <b>82324</b> <b>W34A</b>	APP CRS <b>346°</b>	Rwy Idg TDZE <b>681</b> Apt Elev <b>723</b>
--	------------------------	---

# RNAV (GPS) RWY 34R

PEROT FLD/FORT WORTH ALLIANCE (AFW)

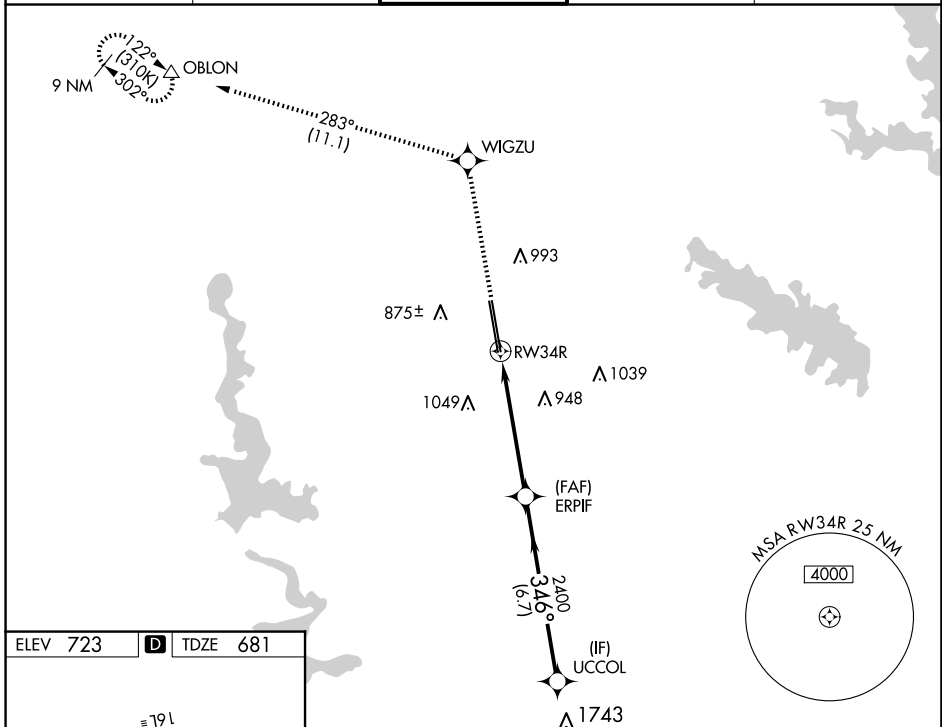
▼ For uncompensated Baro-VNAV systems, LNAV/VNAV NA below -8°C (18°F) or above 54°C (130°F). Circling NA east of Rwy 16L-34R. DME/DME RNP-0.3 NA.  
 ▲ For inop ALS, increase LPV Cat E visibility to RVR 4000, increase LNAV/VNAV all Cats visibility to 2 SM, increase LNAV Cat E visibility to 1½ SM.

MALSR

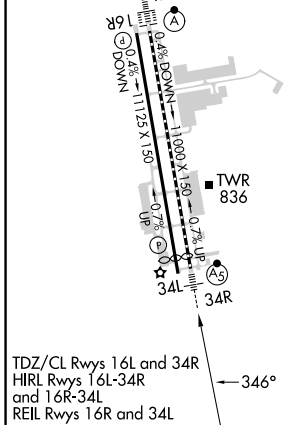


MISSED APPROACH: Climb to 3000 direct WIGZU and on track 283° to OBLON and hold.

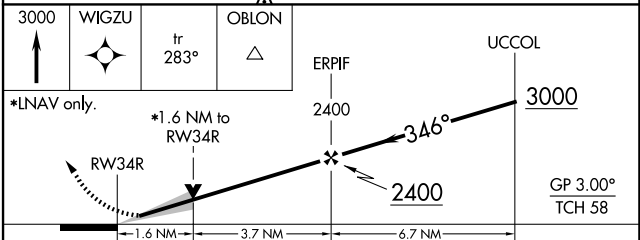
ATIS <b>126.925</b>	LONE STAR APP CON <b>118.1 306.95</b>	ALLIANCE TOWER <b>135.15 257.9</b>	GND CON <b>132.65 306.2</b>	CLNC DEL <b>128.725</b>
------------------------	--	---------------------------------------	--------------------------------	----------------------------



ELEV 723	<b>D</b>	TDZE 681
----------	----------	----------



FORT WORTH, TEXAS  
Amdt 3 29MAR18



CATEGORY	A	B	C	D	E
LPV DA	881/18 200 (200-½)				
LNAV/VNAV DA	1437-1¾ 756 (800-1¾)				
LNAV MDA	1240/24	559 (600-½)	1240/60	559 (600-1¼)	
<b>C</b> CIRCLING	1240-1 517 (600-1)	1320-1 597 (600-1)	1360-1¾ 637 (700-1¾)	1380-2 657 (700-2)	1380-2½ 657 (700-2½)

FORT WORTH, TEXAS  
Amdt 3 29MAR18

32°59'N-97°19'W

# RNAV (GPS) RWY 34R

SC-2, 15 MAY 2025 to 12 JUN 2025

SC-2, 15 MAY 2025 to 12 JUN 2025