

WAAS CH <b>82541</b> <b>W16B</b>	APP CRS <b>166°</b>	Rwy Idg TDZE Apt Elev	<b>10600</b> <b>723</b> <b>723</b>
--	------------------------	-----------------------------	--

# RNAV (GPS) RWY 16L

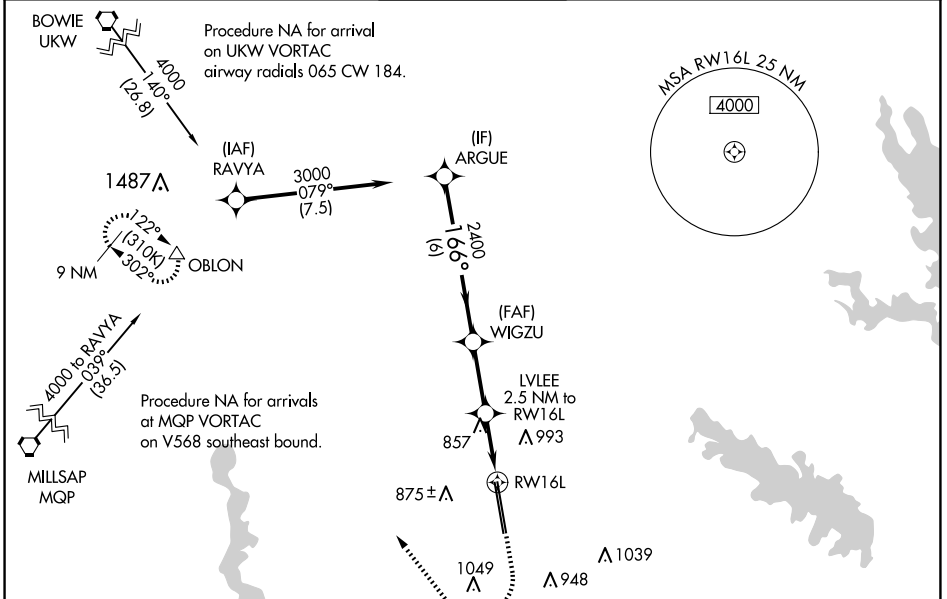
PEROT FLD/FORT WORTH ALLIANCE (A.F.W)

**⚠** For uncompensated Baro-VNAV systems, LNAV/VNAV NA below -8°C (18°F) or above 54°C (130°F). Circling NA east of Rwy 16L-34R. DME/DME RNP-0.3 NA. For inop ALS, increase LPV Cat E visibility to RVR 4000, LNAV/VNAV all Cats visibility to RVR 4500 and LNAV Cat E visibility to RVR 6000.

**ALSF-2**

**MISSED APPROACH:** Climb to 1200 then climbing right turn to 3000 direct OBLON and hold.

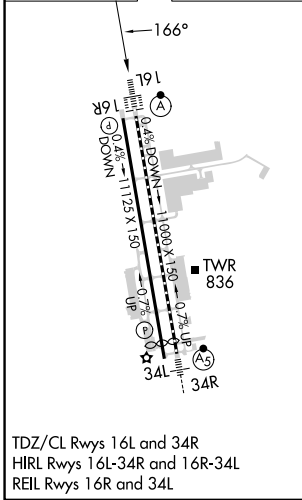
ATIS <b>126.925</b>	LONE STAR APP CON <b>118.1 306.95</b>	<b>ALLIANCE TOWER</b> <b>135.15 257.9</b>	GND CON <b>132.65 306.2</b>	CLNC DEL <b>128.725</b>
------------------------	--	--	--------------------------------	----------------------------



SC-2, 15 MAY 2025 to 12 JUN 2025

SC-2, 15 MAY 2025 to 12 JUN 2025

ELEV 723	<b>D</b>	TDZE 723
----------	----------	----------



	ARGUE	WIGZU	LVLEE	OBLON	
	3000	2400	2.5 NM to RW16L	△	
	GP 3.00°	166°	*1.1 NM to RW16L	*LNAV only.	
	TCH 55	*1560	RW16L		
	6 NM	2.6 NM	1.4 NM	1.1 NM	
CATEGORY	A	B	C	D	E
LPV DA		923/18	200 (200-½)		
LNAV/VNAV DA		1016/24	293 (300-½)		
LNAV MDA	1120/24	397 (400-½)	1120/35	397 (400-¾)	
<b>C</b> CIRCLING	1160-1 437 (500-1)	1320-1 597 (600-1)	1360-1¾ 637 (700-1¾)	1380-2 657 (700-2)	1380-2¼ 657 (700-2¼)

# RNAV (GPS) RWY 16L