

LOC/DME I-JVX 110.15 Chan 38 (Y)	APP CRS 346°	Rwy ldg TDZE Apt Elev	34R 11000 681 723	34L 10309 686 723
--	------------------------	-----------------------------	--	--

ILS or LOC RWY 34R

PEROT FLD/FORT WORTH ALLIANCE (A/FW)

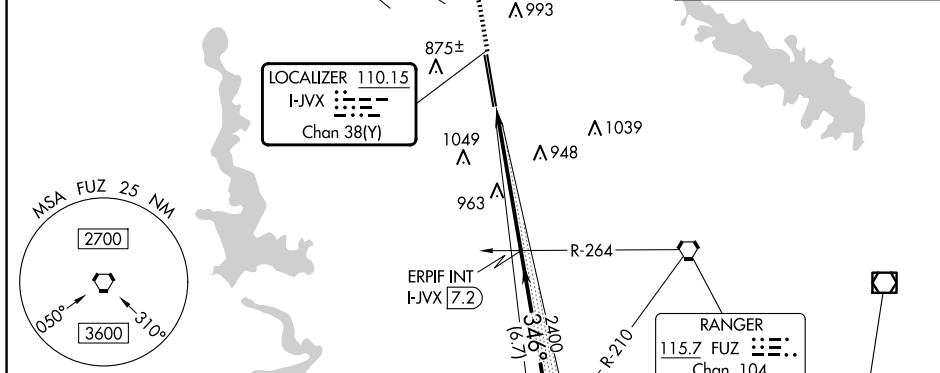
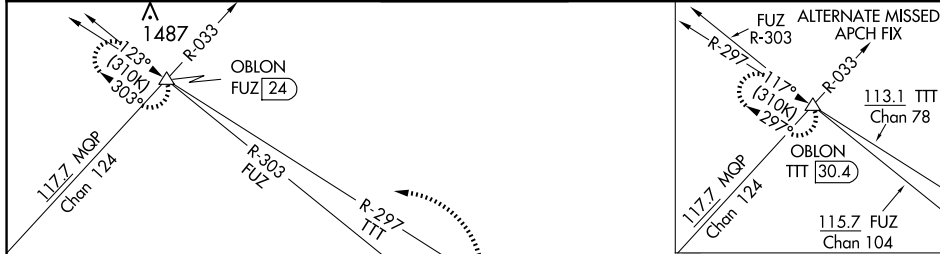
RADAR required for procedure entry.

▼ Circling NA east of Rwy 16L-34R. For inop ALS, increase S-ILS 34R Cat E visibility to RVR 4000 and S-LOC 34R Cat C/D/E visibility to 1 $\frac{1}{2}$ SM.

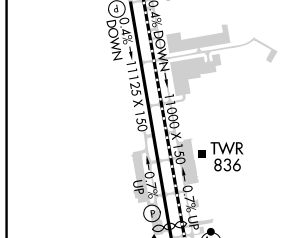


MISSED APPROACH: Climb to 1200 then climbing left turn to 3000 on heading 270° and FUZ VORTAC R-303 to OBLON INT/FUZ 24 DME and hold.

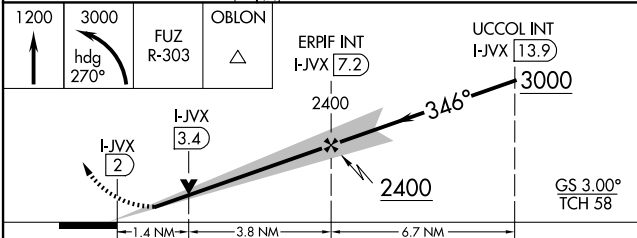
ATIS 126.925	LONE STAR APP CON 118.1 306.95	ALLIANCE TOWER 135.15 257.9	GND CON 132.65 306.2	CLNC DEL 128.725
------------------------	--	---------------------------------------	--------------------------------	----------------------------



ELEV 723	D TDZE 34R 681 TDZE 34L 686
----------	---------------------------------------



FAF to MAP 5.3 NM					
Knots	60	90	120	150	180
Min:Sec	5:18	3:32	2:39	2:07	1:46



CATEGORY	A	B	C	D	E
S-ILS 34R	881/18 200 (200-1/2)				
S-LOC 34R	1180/24	499 (500-1/2)	1180/50 499 (500-1)		
SIDESTEP 34L	1220-1	534 (600-1)	1220-1 $\frac{1}{2}$ 534 (600-1 $\frac{1}{2}$)	1220-2	534 (600-2)
CIRCLING	1220-1 497 (500-1)	1320-1 597 (600-1)	1360-1 $\frac{3}{4}$ 637 (700-1 $\frac{3}{4}$)	1360-2 637 (700-2)	1380-2 $\frac{1}{4}$ 657 (700-2 $\frac{1}{4}$)

SC-2, 15 MAY 2025 to 12 JUN 2025

SC-2, 15 MAY 2025 to 12 JUN 2025