

APP CRS	Rwy Idg	<b>4000</b>
<b>354°</b>	TDZE	<b>248</b>
	Apt Elev	<b>248</b>

# RNAV (GPS) RWY 35

PANOLA COUNTY-SHARPE FLD (4F2)

RNP APCH-GPS.

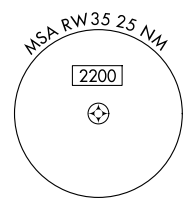
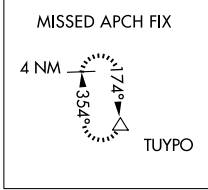
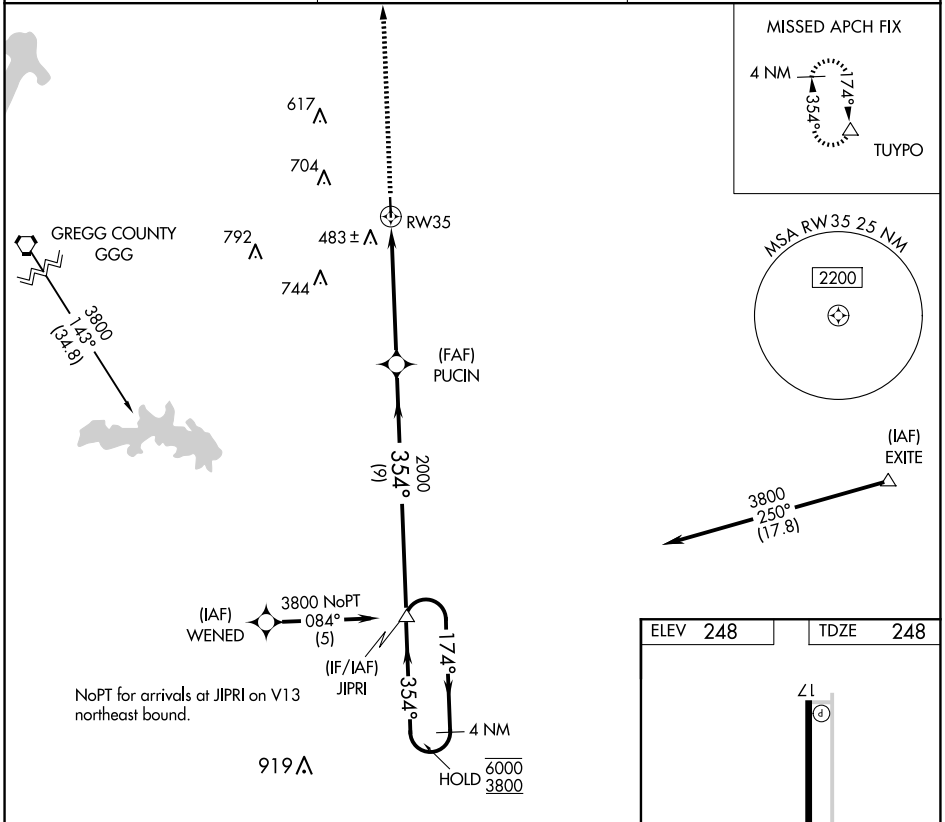
**⚠** Rwy 35 helicopter visibility reduction below 3/4 SM NA.  
When local altimeter setting not received, use Longview altimeter setting.

MISSED APPROACH: Climb to 2000 direct TUYPO and hold.

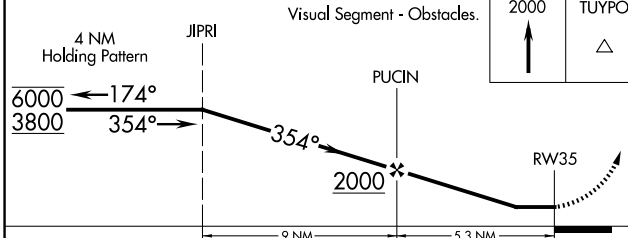
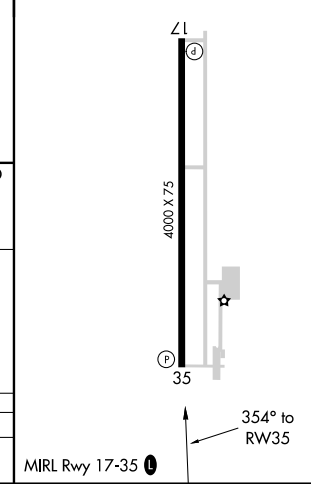
AWOS-3PT  
**121.125**

SHREVEPORT APP CON \*  
**119.9 335.55**

UNICOM  
**122.8 (CTAF) 0**



ELEV	248	TDZE	248
------	-----	------	-----



CATEGORY	A	B	C	D
LNAV MDA	840-1	592 (600-1)	840-1½ 592 (600-1½)	NA

SC-2, 15 MAY 2025 to 12 JUN 2025

SC-2, 15 MAY 2025 to 12 JUN 2025