

WAAS CH <b>97413</b> <b>W35A</b>	APP CRS <b>355°</b>	Rwy Idg <b>8002</b> TDZE <b>1147</b> Apt Elev <b>1167</b>
--	------------------------	---

# RNAV (GPS) RWY 35

ENID WOODRING RGNL (WDG)

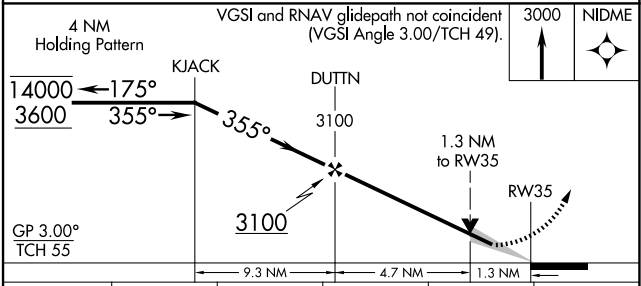
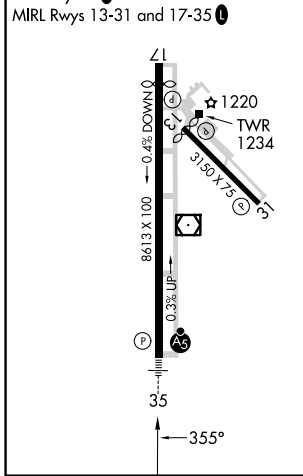
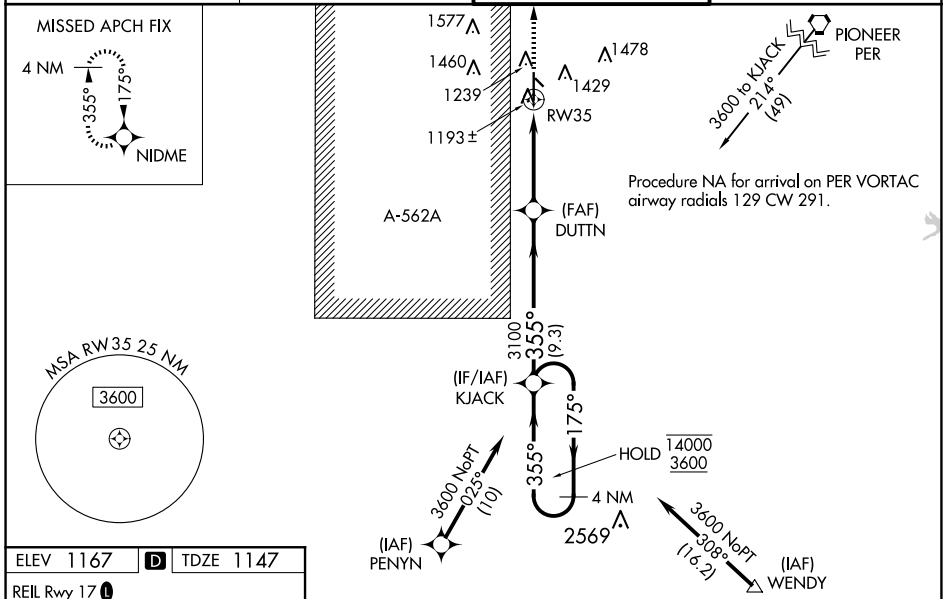
**RNP APCH-GPS.**

**⚠** For uncompensated Baro-VNAV systems, LNAV/VNAV NA below -17°C or above 54°C. Baro-VNAV and VDP NA when using GOK altimeter setting. Circling Rwy 13 NA at night. When local altimeter setting not received, use GOK altimeter setting and increase LPV DA to 1445 feet; increase LNAV/VNAV DA to 1495 feet and all visibilities ½ SM. Increase all MDAs 100 feet and LNAV visibility Cat C/D/E ¼ SM, and Circling visibility Cat C/D ½ SM. For inop ALS, increase LPV Cat E visibility to ¾ SM, increase LNAV/VNAV all Cats visibility to ¾ SM, and increase LNAV Cat E visibility to 1 ⅜ SM.

**MALSR**

**MISSED APPROACH:** Climb to 3000 direct NIDME and hold.

<b>AWOS-3PT</b> <b>123.725</b>	<b>VANCE APP CON *</b> <b>121.3 346.325</b>	<b>WOODRING TOWER *</b> <b>118.9 (CTAF) 0 257.95</b>	<b>GND CON</b> <b>121.925</b>
-----------------------------------	--	---	----------------------------------



CATEGORY	A	B	C	D	E
LPV DA	1347-½		200 (200-½)		
LNAV/VNAV DA	1397-½		250 (300-½)		
LNAV MDA	1600-½	453 (500-½)	1600-7/8		453 (500-7/8)
<b>C</b> CIRCLING	1760-1	593 (600-1)	1820-1¾ 653 (700-1¾)	1880-2¼ 713 (800-2¼)	2000-3 833 (900-3)

SC-1, 15 MAY 2025 to 12 JUN 2025

SC-1, 15 MAY 2025 to 12 JUN 2025