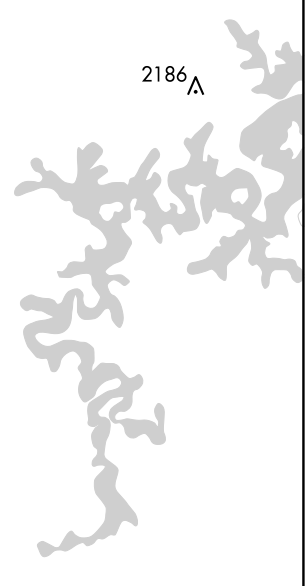
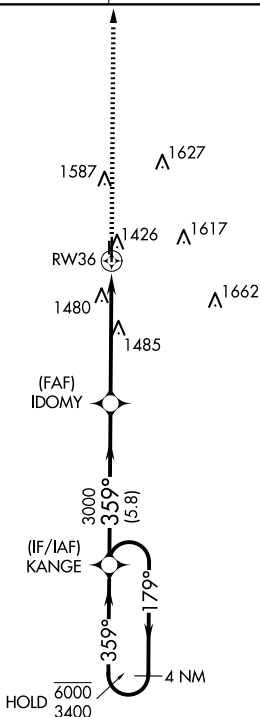
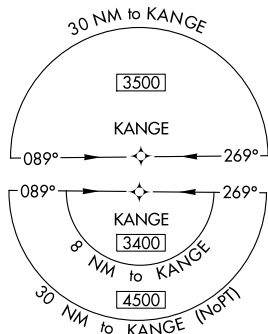
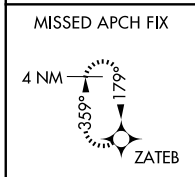


WAAS CH <b>53729</b> <b>W36A</b>	APP CRS <b>359°</b>	Rwy Idg TDZE <b>1298</b> Apt Elev <b>1298</b>	<b>4196</b>
--	------------------------	---	-------------

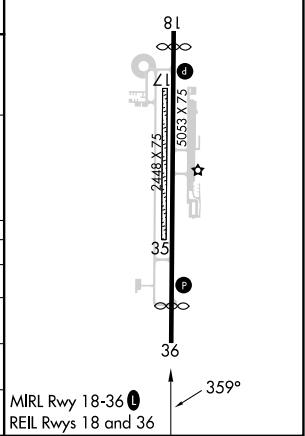
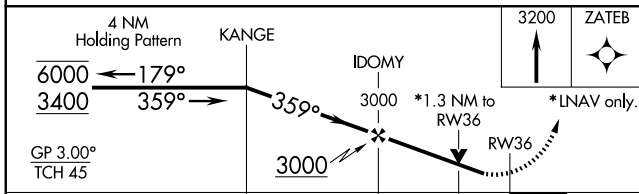
# RNAV (GPS) RWY 36

BENTONVILLE MUNI/LOUISE M THADEN FLD (VBT)

RNP APCH.		MISSED APPROACH: Climb to 3200 direct ZATEB and hold.	
AWOS-3PT <b>134.975</b>	RAZORBACK APP CON ★ <b>121.0 (WEST) 244.575</b>	CLNC DEL <b>121.05 263.125</b>	UNICOM <b>122.975 (CTAF) 0</b>



ELEV 1298	<b>D</b> TDZE 1298
-----------	--------------------



CATEGORY	A	B	C	D
LPV DA	1548-1		250 (300-1)	
LNAV/VNAV DA	1672-1		374 (400-1)	
LNAV MDA	1780-1	482 (500-1)	1780-1 $\frac{3}{8}$	482 (500-1 $\frac{1}{8}$ )
<b>C</b> CIRCLING	1780-1	482 (500-1)	1920-1 $\frac{3}{4}$ 622 (700-1 $\frac{3}{4}$ )	1940-2 642 (700-2)

MIRL Rwy 18-36 **0**  
REIL Rwys 18 and 36

SC-1, 15 MAY 2025 to 12 JUN 2025

SC-1, 15 MAY 2025 to 12 JUN 2025