

WAAS Ch 53699 W22A	APP CRS 220°	Rwy Idg 6602 TDZE 384 Apt Elev 390
--	------------------------	---

RNAV (GPS) RWY 22

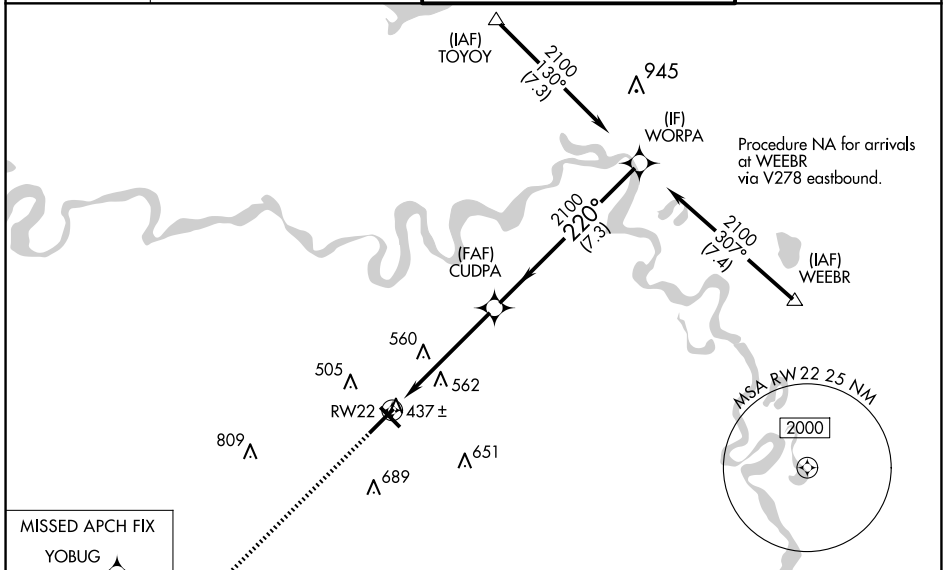
TEXARKANA RGNL-WEBB FLD (TXK)

⚠ DME/DME RNP-0.3 NA. For uncompensated Baro-VNAV systems, LNAV/VNAV NA below -1.5°C (5°F) or above 48°C (118°F). When local altimeter setting not received, use J Lynn Helms Sevier County altimeter setting and increase all DA/MDA 100 feet, increase LPV all Cats visibility ¼ mile, LNAV/VNAV all Cats visibility ½ mile, LNAV and circling Cat C and D visibility ¼ mile. Baro-VNAV and VDP NA when using J Lynn Helms Sevier County altimeter setting. For inoperative MALSR when using J Lynn Helms Sevier County altimeter setting increase LPV all Cats visibility to ¼.

MALSR

MISSED APPROACH:
Climb to 2000 direct YOBUG and hold.

ATIS 120.2	FORT WORTH CENTER 123.925 269.475	TEXARKANA TOWER ★ 123.875 (CTAF) 0 235.625	GND CON 119.225
----------------------	---	--	---------------------------



MISSED APCH FIX
YOBUG

2000 | **YOBUG**

*LNAV only.

CATEGORY	A	B	C	D
LPV DA	634-½			250 (300-½)
LNAV/VNAV DA	687-½			303 (300-½)
LNAV MDA	820-½		436 (500-½)	820-1
CIRCLING	820-1	900-1	1000-1¾	1080-2¼
	430 (500-1)	510 (600-1)	610 (700-1¾)	690 (700-2¼)

ELEV 390 | **D** TDZE 384

MIRL Rwy 13-31 **0**
HIRL Rwy 4-22 **0**

SC-1, 15 MAY 2025 to 12 JUN 2025

SC-1, 15 MAY 2025 to 12 JUN 2025