

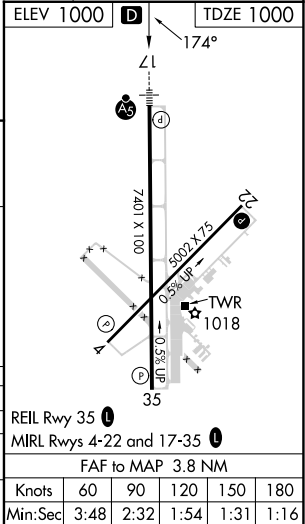
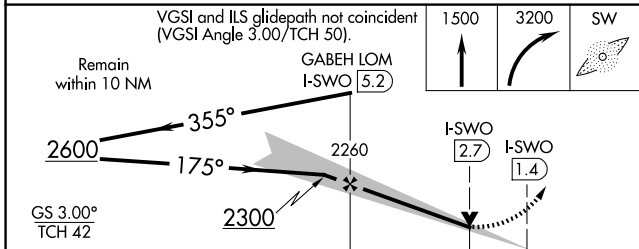
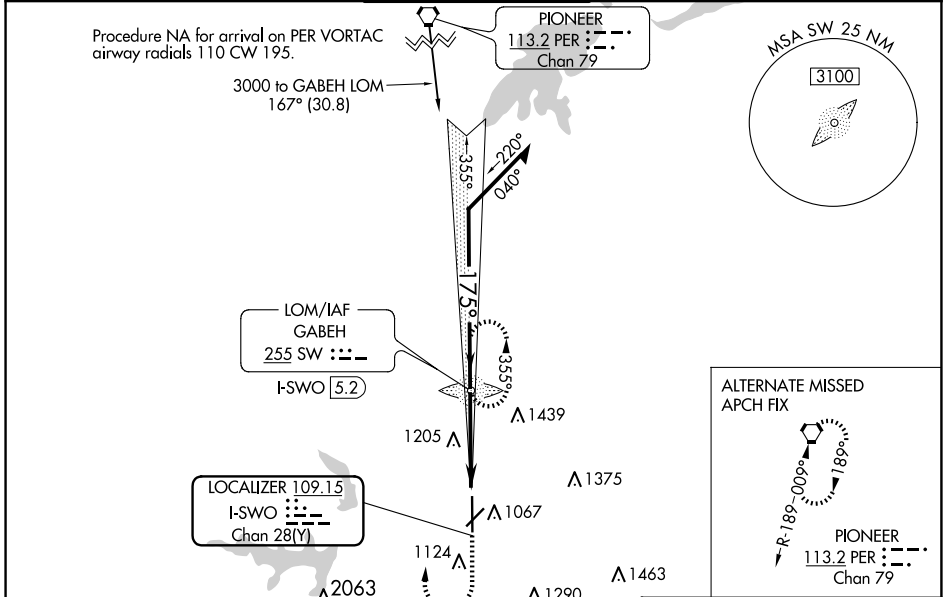
LOC/DME I-SWO <b>109.15</b> Chan <b>28</b> (Y)	APP CRS <b>175°</b>	Rwy Idg <b>7401</b> TDZE <b>1000</b> Apt Elev <b>1000</b>
--	------------------------	---

# ILS or LOC RWY 17

STILLWATER RGNL (SWO)

ADF required.	MALSR AS	MISSED APPROACH: Climb to 1500 then climbing right turn to 3200 direct GABEH LOM and hold, continue climb-in-hold to 3200.
<p>▼ VDP NA when using Ponca City altimeter setting. When local altimeter setting not received, use Ponca City altimeter setting and increase S-ILS 17 DA to 1280 feet; increase all MDAs 80 feet and S-LOC 17 visibility Cats C/D 1/8 SM, and increase Circling Cat C visibility 1/2 SM and Cat D visibility 1/2 SM. For inop ALS when using Ponca City altimeter setting, increase S-ILS 17 all Cats visibility to 7/8 SM.</p>		

ASOS <b>135.725</b>	KANSAS CITY CENTER <b>127.8 319.1</b>	STILLWATER TOWER ★ <b>125.35</b> (CTAF) 0	GND CON <b>121.6</b>	UNICOM <b>122.95</b>
------------------------	--	--	-------------------------	-------------------------



CATEGORY	A	B	C	D
S-ILS 17		1200-1/2	200 (200-1/2)	
S-LOC 17	1460-1/2	460 (500-1/2)	1460-7/8	460 (500-7/8)
CIRCLING	1460-1 460 (500-1)	1480-1 480 (500-1)	1540-1 1/2 540 (600-1/2)	1740-2 1/4 740 (800-2/4)