

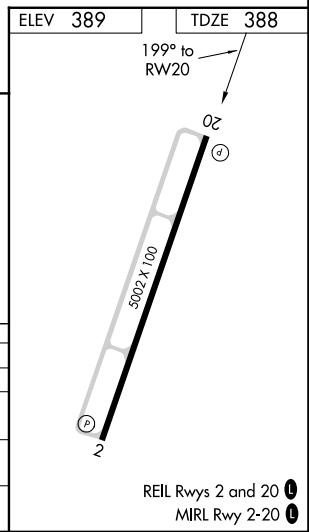
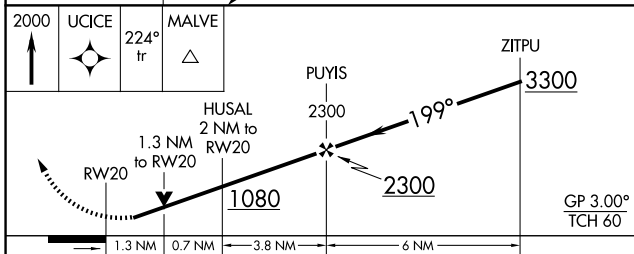
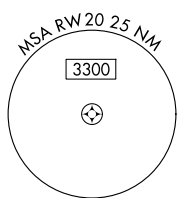
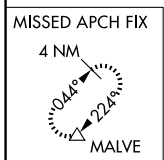
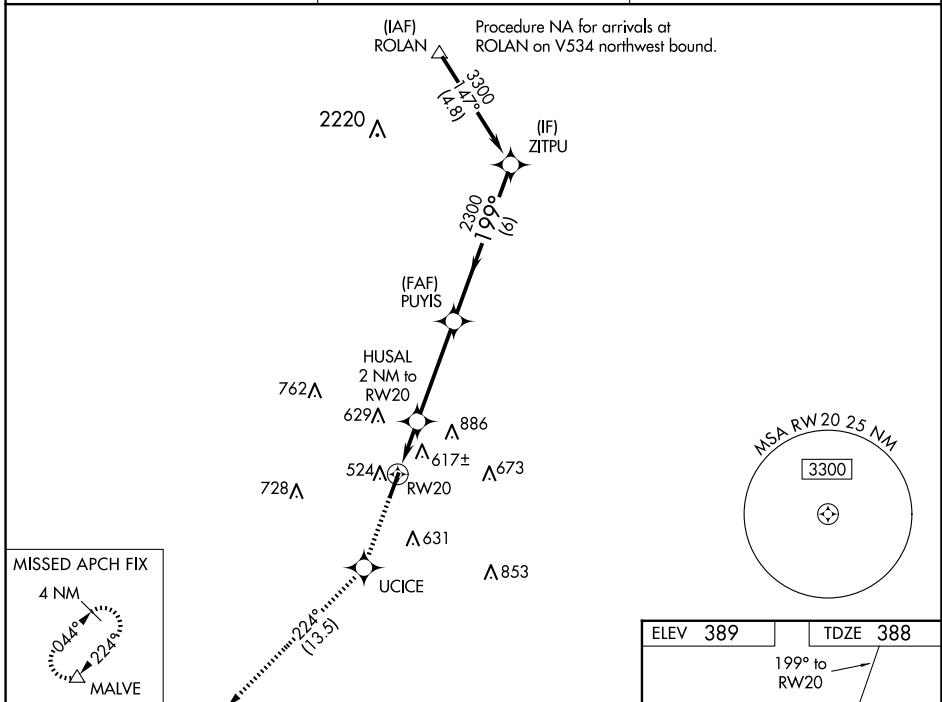
WAAS CH <b>40309</b> W20A	APP CRS <b>199°</b>	Rwy Idg TDZE <b>388</b> Apt Elev <b>389</b>	<b>5002</b> <b>388</b> <b>389</b>
---------------------------------	------------------------	---	---

# RNAV (GPS) RWY 20

SALINE COUNTY RGNL (SUZ)

RNP APCH - GPS.	MISSED APPROACH: Climb to 2000 direct UCICE and track 224° to MALVE and hold.
<p><b>⚠</b> Rwy 20 helicopter visibility reduction below 3/4 SM NA. For uncompensated Baro-VNAV systems, LNAV/VNAV NA below -15°C or above 54°C.</p>	

AWOS-3 <b>132.125</b>	LITTLE ROCK APP CON <b>119.5 306.2</b>	UNICOM <b>122.8 (CTAF)</b>
--------------------------	---	-------------------------------



CATEGORY	A	B	C	D
LPV DA		639-3/4	251 (300-3/4)	
LNAV/VNAV DA		789-1 1/8	401 (400-1 1/8)	
LNAV MDA	880-1	492 (500-1)	880-1 3/8	492 (500-1 3/8)
CIRCLING	940-1 551 (600-1)	1080-1 691 (700-1)	1200-2 1/2 811 (900-2 1/2)	1200-2 3/4 811 (900-2 3/4)

SC-1, 15 MAY 2025 to 12 JUN 2025

SC-1, 15 MAY 2025 to 12 JUN 2025