

APP CRS CH 45643 W17A	APP CRS 176°	Rwy Idg TDZE 1420 Apt Elev 1420	5600 1420 1420
---	------------------------	---	---

RNAV (GPS) RWY 17

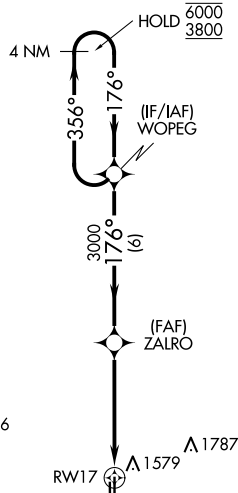
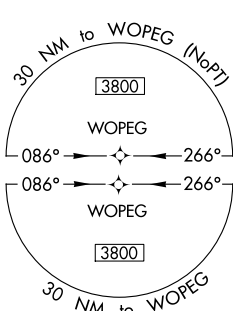
EL RENO RGNL (RQO)

RNP APCH-GPS.

▼ Circling NA to Rwy 18 and 36. Circling Rwy 35 NA at night.
▲ Rwy 17 helicopter visibility reduction below 3/4 SM NA. For uncompensated Baro-VNAV systems, LNAV/VNAV NA below -17°C or above 54°C.

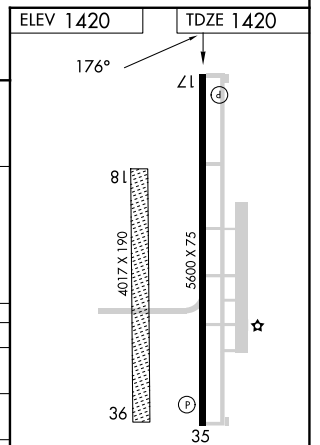
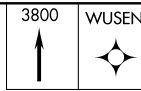
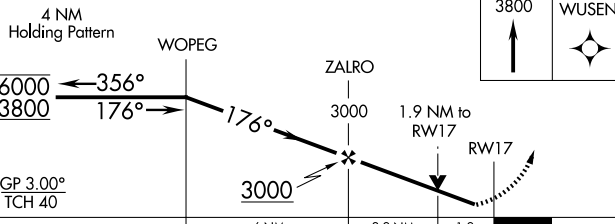
MISSED APPROACH: Climb to 3800 direct WUSEN and hold.

AWOS-3 118.475	OKE CITY APP CON 124.6 266.8	UNICOM 122.8 (CTAF) 0
--------------------------	--	---------------------------------



▲2283

MISSED APCH FIX



CATEGORY	A	B	C	D
LPV DA		1670-3/4	250 (300-3/4)	
LNAV/VNAV DA		1754-1	334 (400-1)	
LNAV MDA	1860-1	440 (500-1)	1860-1 1/4	440 (500-1 1/4)
C CIRCLING	1900-1	480 (500-1)	2140-2 720 (800-2)	2140-2 1/4 720 (800-2 1/4)

MIRL Rwy 17-35 0
REIL Rwy 17 and 35 0

SC-1, 15 MAY 2025 to 12 JUN 2025

SC-1, 15 MAY 2025 to 12 JUN 2025