

LOC/DME I-PHY <b>111.1</b> Chan <b>48</b>	APP CRS <b>033°</b>	Rwy Idg <b>4748</b> TDZE <b>1177</b> Apt Elev <b>1182</b>
---	------------------------	---

# LOC RWY 3

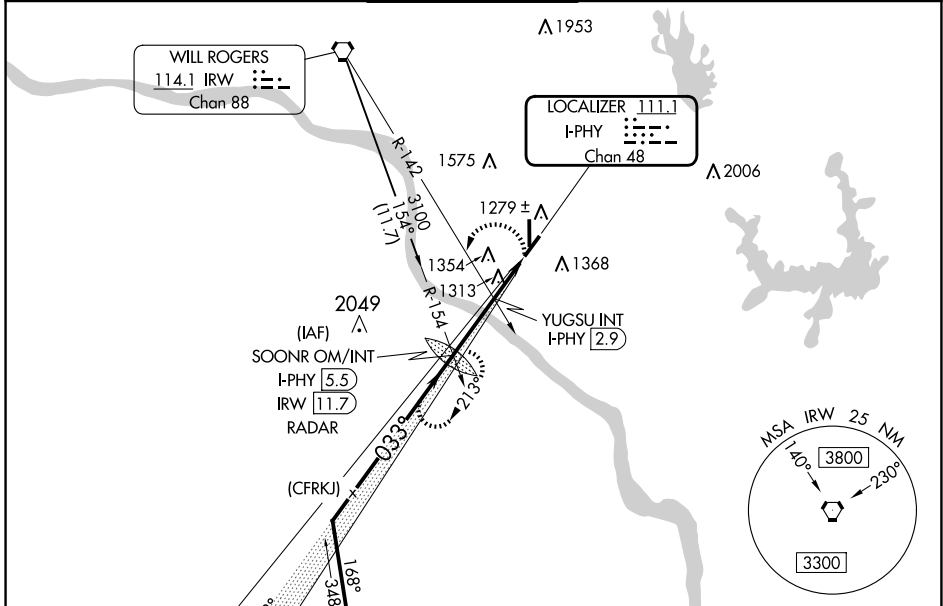
UNIVERSITY OF OKLAHOMA WESTHEIMER (OUN)

**⚠** When local altimeter setting not received, use OKC Will Rogers Intl altimeter setting and increase all MDA 60 feet; increase S-3 Cat C/D visibility ¼ mile, Circling Cat C/D ¼ mile. For inop MALS increase S-3 Cat C/D visibility to 1¾ mile. For inop MALS when using OKC Will Rogers Intl altimeter setting, increase S-3 Cat C/D visibility to 1¾ mile. Circling NA southeast of Rwy 3 and 21.

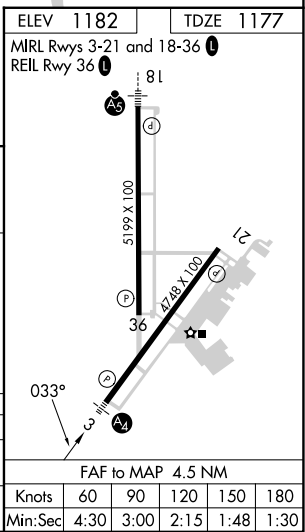
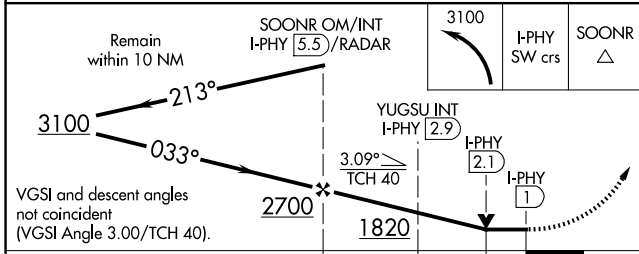
**MALS**

**MISSED APPROACH:** Climbing left turn to 3100 on I-PHY SW course to SOONR OM/INT/I-PHY 5.5 DME/RADAR and hold, continue climb-in-hold to 3100.

AWOS-3PT <b>119.55</b>	OKE CITY APP CON <b>120.45 288.325</b>	WESTHEIMER TOWER* <b>118.0</b> (CTAF)	GND CON <b>121.6</b>	UNICOM <b>122.95</b>
---------------------------	---	--	-------------------------	-------------------------



ELEV 1182	TDZE 1177
MRL Rwy 3-21 and 18-36	REIL Rwy 36



CATEGORY	A	B	C	D
S-3	1580-¾	403 (400-¾)	1580-1	403 (400-1)
<b>C</b> CIRCLING	1660-1	478 (500-1)	1940-2¼ 758 (800-2¼)	1940-2½ 758 (800-2½)

FAF to MAP 4.5 NM					
Knots	60	90	120	150	180
Min:Sec	4:30	3:00	2:15	1:48	1:30

SC-1, 15 MAY 2025 to 12 JUN 2025

SC-1, 15 MAY 2025 to 12 JUN 2025