

WAAS CH 61218 W35B	APP CRS 356°	Rwy Idg TDZE Apt Elev	9802 1294 1296
--	------------------------	-----------------------------	---

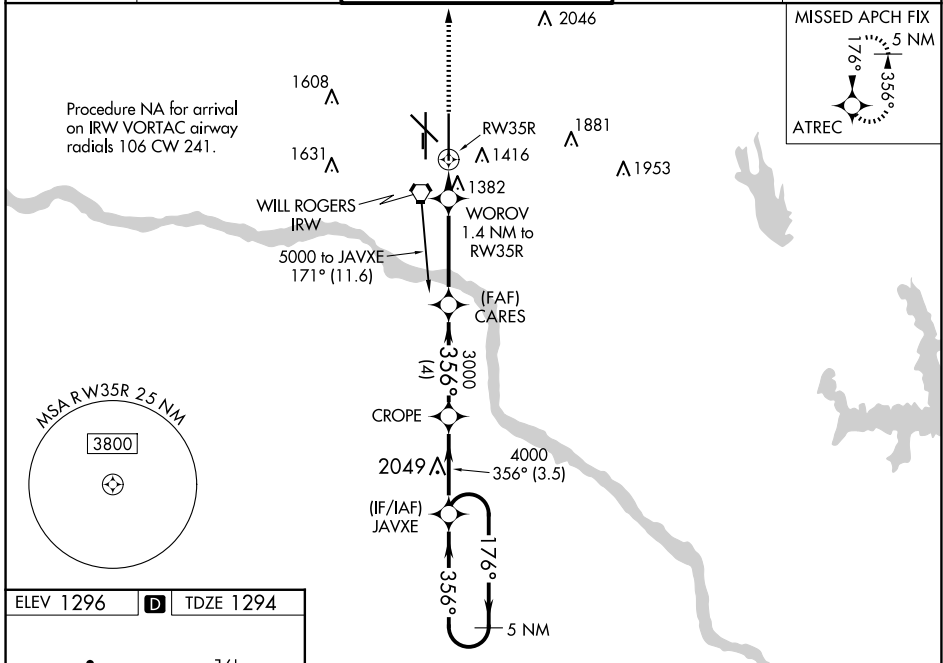
RNAV (GPS) Y RWY 35R

OKC WILL ROGERS INTL (OKC)

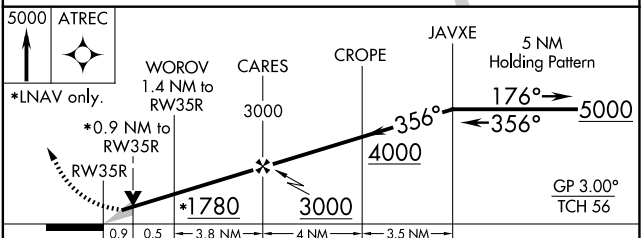
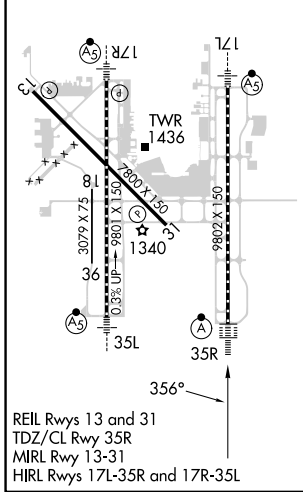
⚠ For uncompensated Baro-VNAV systems, LNAV/VNAV NA below -12°C (11°F) or above 54°C (130°F). DME/DME RNP-0.3 NA. For inop ALSF, increase LPV and LNAV/VNAV Cat E visibility to RVR 4000. Increase LNAV all Cats visibility to RVR 5500. Simultaneous approach authorized with Rwy 35L. LNAV procedure NA during simultaneous operations. Use of FD or AP providing RNAV track guidance required during simultaneous operations.

ASR **ALSF-2** **MISSED APPROACH:** Climb to 5000 direct ATREC and hold, continue climb-in-hold to 5000.

D-ATIS 125.85	OKC CITY APP CON 124.6 266.8	ROGERS TOWER 119.35 269.45	GND CON 121.9 348.6	CLNC DEL 124.35
-------------------------	--	--------------------------------------	-------------------------------	---------------------------



ELEV 1296	D	TDZE 1294
-----------	----------	-----------



CATEGORY	A	B	C	D	E
LPV DA		1494/18	200 (200-½)		
LNAV/VNAV DA		1544/24	250 (300-½)		
LNAV MDA	1640/24	346 (400-½)	1640/40	346 (400-¾)	
C CIRCLING	1740-1 444 (500-1)	1760-1 464 (500-1)	1960-1¾ 664 (700-1¾)	2000-2¼ 704 (800-2¼)	2240-3 944 (1000-3)

SC-1, 15 MAY 2025 to 12 JUN 2025

SC-1, 15 MAY 2025 to 12 JUN 2025