

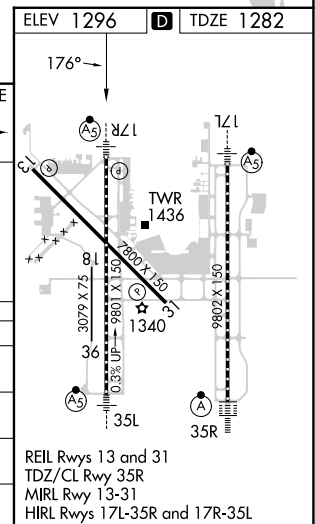
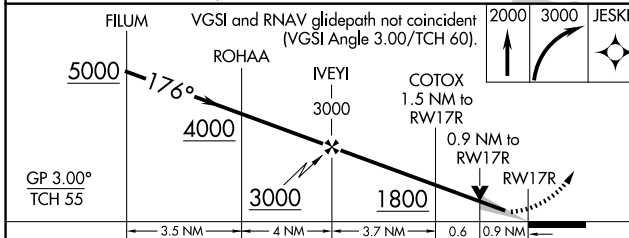
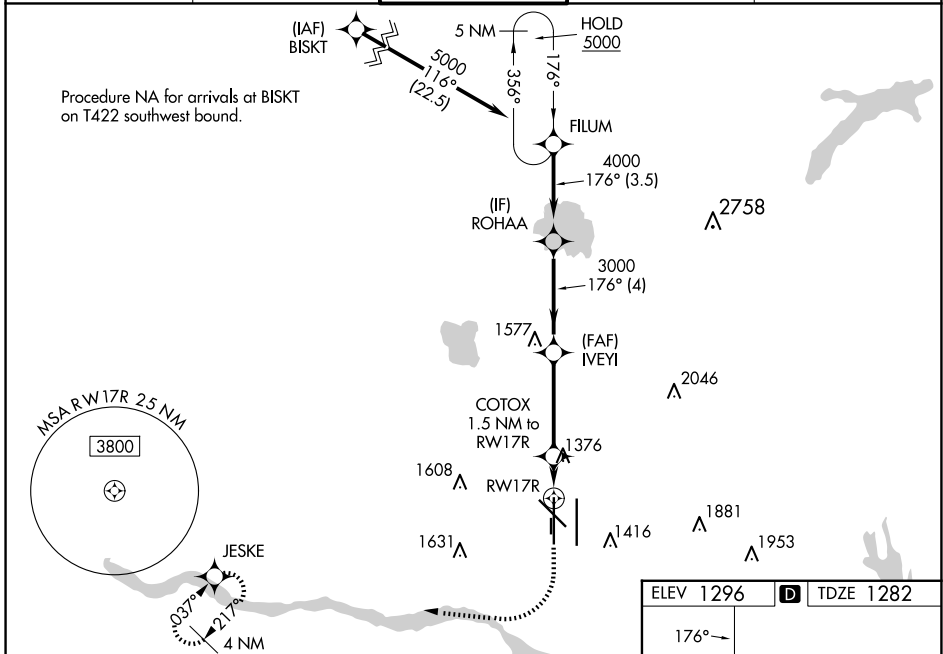
WAAS CH <b>50102</b> <b>W17A</b>	APP CRS <b>176°</b>	Rwy Idg TDZE Apt Elev	<b>9800</b> <b>1282</b> <b>1296</b>
--	------------------------	-----------------------------	---

# RNAV (GPS) Y RWY 17R

OKC WILL ROGERS INTL (OKC)

RNP APCH-GPS.		MALSR	MISSED APPROACH: Climb to 2000 then climbing right turn to 3000 direct JESKE and hold.
<p>Simultaneous approach authorized. LNAV procedure NA during simultaneous operations. Use of FD or AP required during simultaneous operations. For uncompensated Baro-VNAV systems, LNAV/VNAV NA below -12°C or above 54°C. For inop ALS, increase LNAV/VNAV all Cats visibility to RVR 4500, and LNAV Cats C and D visibility to RVR 5500. * RVR 1800 authorized with use of FD or AP or HUD to DA.</p>		ASR	

D-ATIS <b>125.85</b>	OKE CITY APP CON <b>124.6 266.8</b>	<b>ROGERS TOWER</b> <b>119.35 269.45</b>	GND CON <b>121.9 348.6</b>	CLNC DEL <b>124.35</b>
-------------------------	--	---	-------------------------------	---------------------------



CATEGORY	A	B	C	D
LPV DA*		1482/24	200 (200-½)	
LNAV/VNAV DA		1550/24	268 (300-½)	
LNAV MDA	1640/24	358 (400-½)	1640/30	358 (400-¾)
CIRCLING	1740-1 444 (500-1)	1760-1 464 (500-1)	1960-1¾ 664 (700-1¾)	2000-2¼ 704 (800-2¼)

SC-1, 15 MAY 2025 to 12 JUN 2025

SC-1, 15 MAY 2025 to 12 JUN 2025