


WAAS CH <b>56503</b> <b>W17B</b>	APP CRS <b>176°</b>	Rwy Idg <b>9802</b> TDZE <b>1287</b> Apt Elev <b>1296</b>
--	------------------------	---

# RNAV (GPS) Y RWY 17L

OKC WILL ROGERS INTL (OKC)

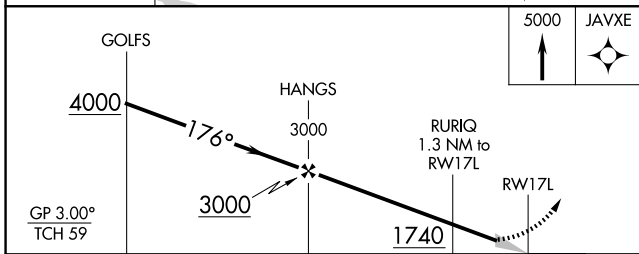
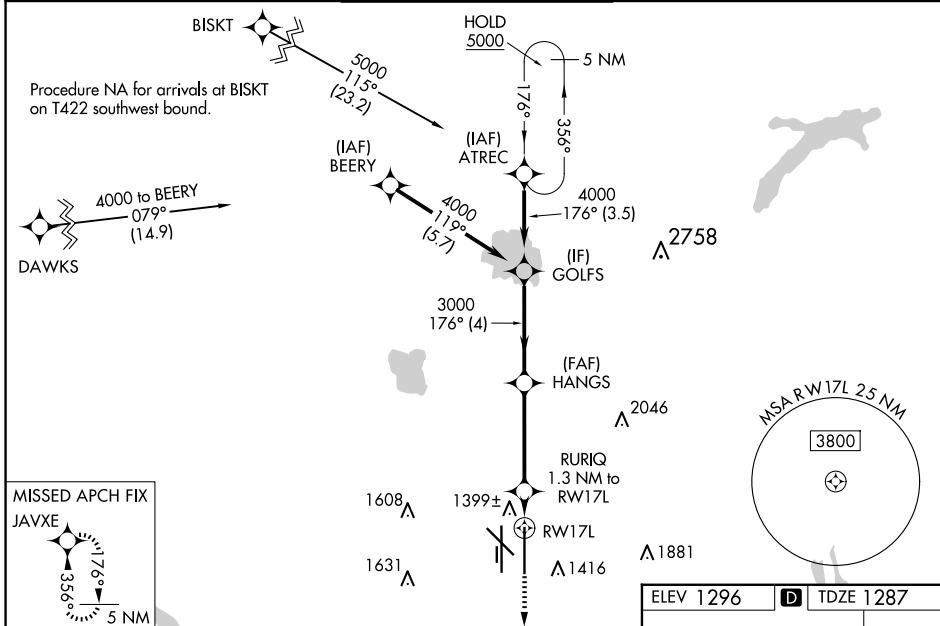
RNP APCH-GPS.

**ASR** Simultaneous approach authorized. LNAV procedure NA during simultaneous operations. Use of FD or AP required during simultaneous operations. For uncompensated Baro-VNAV systems, LNAV/VNAV NA below -12°C or above 54°C. For inop ALS, increase LPV Cat E visibility to RVR 4000, LNAV/VNAV Cat E visibility to RVR 4500, and LNAV all Cats visibility to RVR 5500.  
\* RVR 1800 authorized with use of FD or AP or HUD to DA.

MALSR 

MISSED APPROACH: Climb to 5000 direct JAVXE and hold, continue climb-in-hold to 5000.

D-ATIS <b>125.85</b>	OKE CITY APP CON <b>124.6 266.8</b>	ROGERS TOWER <b>119.35 269.45</b>	GND CON <b>121.9 348.6</b>	CLNC DEL <b>124.35</b>
-------------------------	--	--------------------------------------	-------------------------------	---------------------------



ELEV 1296	<b>D</b> TDZE 1287
-----------	--------------------

TWR 1436

1340

35L 35R

REIL Rwy 13 and 31  
TDZ/CL Rwy 35R  
MIRL Rwy 13-31  
HIRL Rwy 17L-35R and 17R-35L

CATEGORY	A	B	C	D	E
LPV DA*	1487/24		200 (200-½)		
LNAV/VNAV DA	1590/24		303 (300-½)		
LNAV MDA	1660/24 373 (400-½)		1660/35 373 (400-¾)		
<b>C</b> CIRCLING	1740-1 444 (500-1)	1760-1 464 (500-1)	1960-1¾ 664 (700-1¾)	2000-2¼ 704 (800-2¼)	2240-3 944 (1000-3)

SC-1, 15 MAY 2025 to 12 JUN 2025

SC-1, 15 MAY 2025 to 12 JUN 2025