

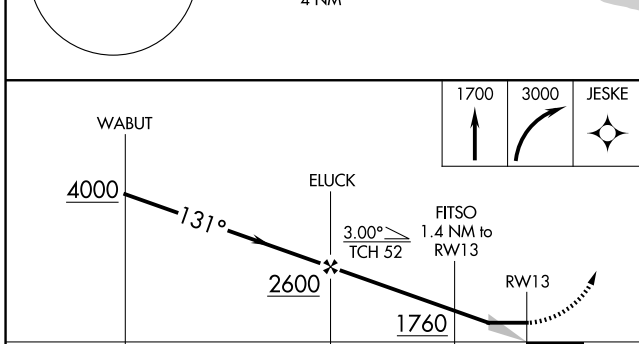
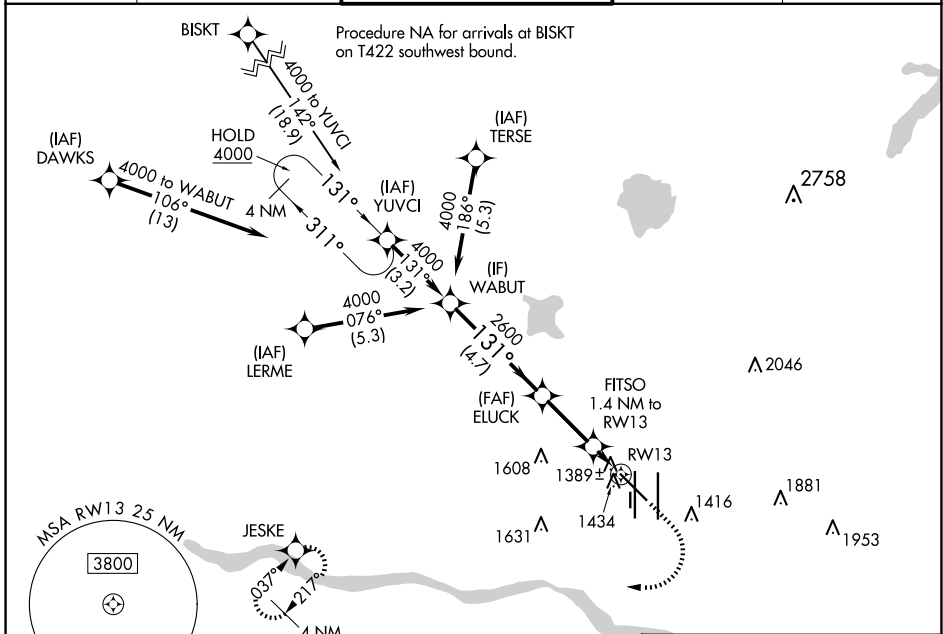
WAAS CH 45625 W13A	APP CRS 131°	Rwy Idg TDZE Apt Elev	7800 1279 1296
--	------------------------	-----------------------------	---

RNAV (GPS) RWY 13

OKC WILL ROGERS INTL (OKC)

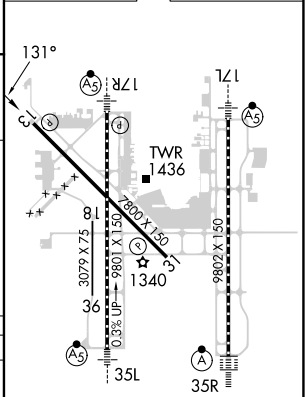
RNP APCH-GPS.		MISSED APPROACH: Climb to 1700 then climbing right turn to 3000 direct JESKE and hold.		
▼	▲			
ASR				

D-ATIS 125.85	OKE CITY APP CON 124.6 266.8	ROGERS TOWER 119.35 269.45	GND CON 121.9 348.6	CLNC DEL 124.35
-------------------------	--	--------------------------------------	-------------------------------	---------------------------



ELEV 1296	D	TDZE 1279
-----------	----------	-----------

CATEGORY	A		B		C		D	
LP MDA	1640-1		361 (400-1)					
LNAV MDA	1700-1		421 (500-1)		1700-1¼		421 (500-1¼)	
CIRCLING	1740-1 444 (500-1)		1760-1 464 (500-1)		1960-1¾ 664 (700-1¾)		2000-2¼ 704 (800-2¼)	



REIL Rwy 13 and 31
TDZ/CL Rwy 35R
MIRL Rwy 13-31
HIRL Rwy 17L-35R and 17R-35L

SC-1, 15 MAY 2025 to 12 JUN 2025

SC-1, 15 MAY 2025 to 12 JUN 2025