

WAAS CH <b>78333</b> <b>W18A</b>	APP CRS <b>181°</b>	Rwy Idg <b>4201</b> TDZE <b>242</b> Apt Elev <b>243</b>
--	------------------------	---

# RNAV (GPS) RWY 18

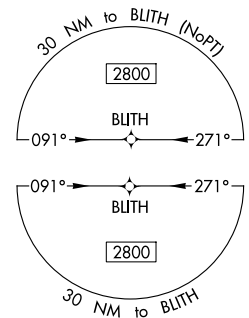
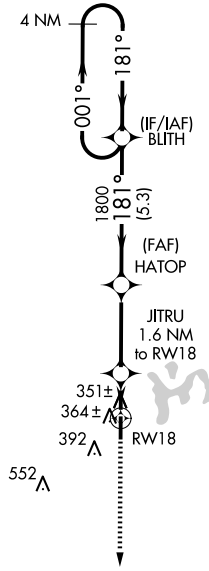
MANILA MUNI (MXA)

RNP APCH-GPS.

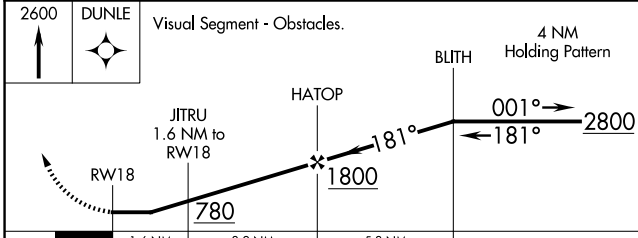
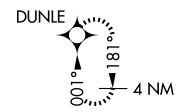
⚠ Straight-in Rwy 18 NA at night, Circling Rwy 18 NA at night. Rwy 18 helicopter visibility reduction below 1 SM NA. Use Blytheville Muni altimeter setting; when not received, use Jonesboro altimeter setting and increase all MDA 20 feet.

MISSED APPROACH:  
Climb to 2600 direct  
DUNLE and hold.

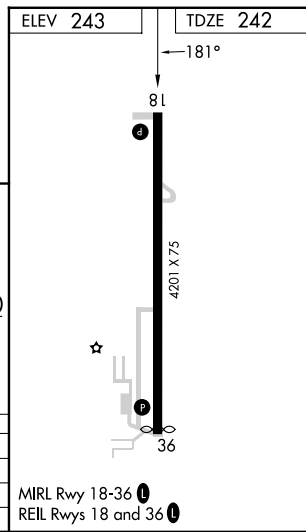
HKA ASOS <b>135.025</b>	MEMPHIS CENTER <b>120.075 289.4</b>	UNICOM <b>122.8 (CTAF)</b> <b>Ⓛ</b>
----------------------------	--	--



745' **Ⓛ**



CATEGORY	A	B	C	D
LP MDA	640-1	398 (400-1)		NA
LNAV MDA	660-1	418 (500-1)		NA
<b>C</b> CIRCLING	740-1	497 (500-1)		NA



SC-1, 15 MAY 2025 to 12 JUN 2025

SC-1, 15 MAY 2025 to 12 JUN 2025