

LOC I-JBR 110.15	APP CRS 230°	Rwy ldg TDZE Apt Elev 6200 262 262
----------------------------	------------------------	--

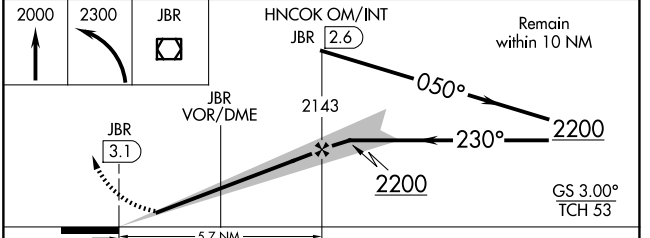
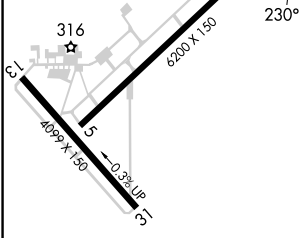
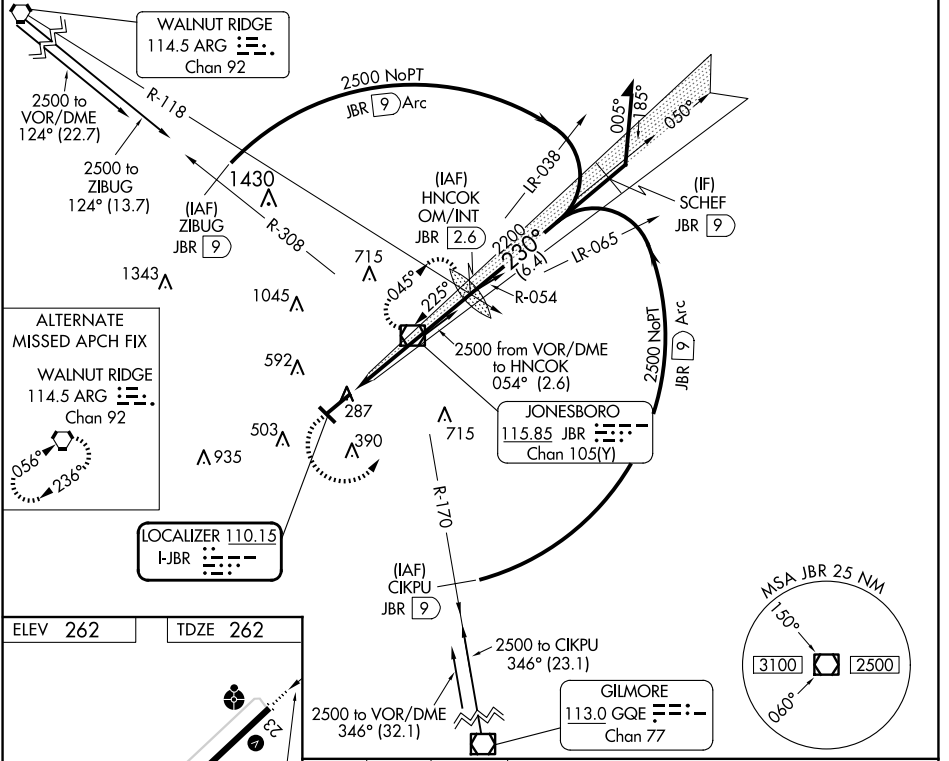
ILS or LOC RWY 23

JONESBORO MUNI (JBR)

⚠ Circling NA northwest of Rwy 5-23. Rwy 23 helicopter visibility reduction below $\frac{3}{4}$ SM NA. When local altimeter not received, use Walnut Ridge altimeter setting; increase DA to 600 feet and all visibilities $\frac{1}{8}$ SM; increase all MDAs 60 feet, S-LOC 23 Cat C/D visibility $\frac{1}{8}$ SM and Circling Cat C $\frac{1}{4}$ SM. For inop ALS, increase S-ILS 23 Cat A/B visibility to $\frac{1}{8}$ SM and S-LOC 23 Cat C/D to $\frac{1}{8}$ SM. For inop ALS when using Walnut Ridge altimeter setting, increase S-ILS 23 Cat A/B visibility to 1 SM. When using Walnut Ridge altimeter setting, inop table does not apply to S-LOC 23 Cats C/D. Circling Rwy 31 NA at night.

ODALS
MISSED APPROACH: Climb to 2000 then climbing left turn to 2300 direct JBR VOR/DME and hold.

ASOS 118.525	MEMPHIS CENTER 120.075 289.4	UNICOM 123.0 (CTAF)
------------------------	--	-------------------------------



MIRL Rwy 5-23 and 13-31 FAF to MAP 5.7 NM				
Knots	60	90	120	150
Min:Sec	5:42	3:48	2:51	2:17
CATEGORY	A	B	C	D
S-ILS 23		546- $\frac{3}{4}$ 284 (300- $\frac{3}{4}$)		
S-LOC 23	720- $\frac{3}{4}$ 458 (500- $\frac{3}{4}$)		720-1 $\frac{1}{4}$ 458 (500-1 $\frac{1}{4}$)	
CIRCLING	740-1 478 (500-1)		820-1 $\frac{1}{2}$ 1080-2 $\frac{3}{4}$ 558 (600-1 $\frac{1}{2}$) 818 (900-2 $\frac{3}{4}$)	

SC-1, 15 MAY 2025 to 12 JUN 2025

SC-1, 15 MAY 2025 to 12 JUN 2025