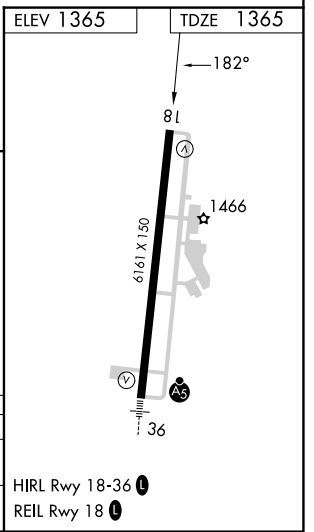
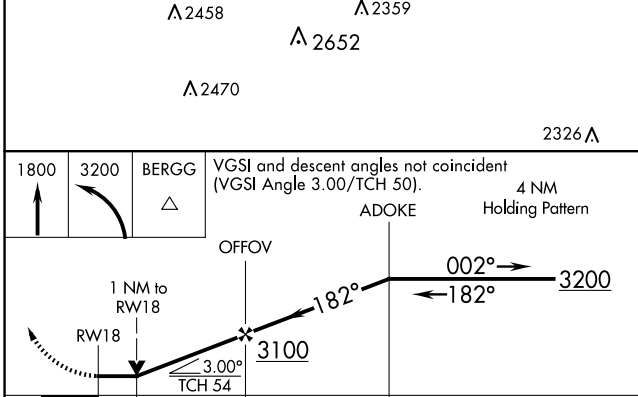
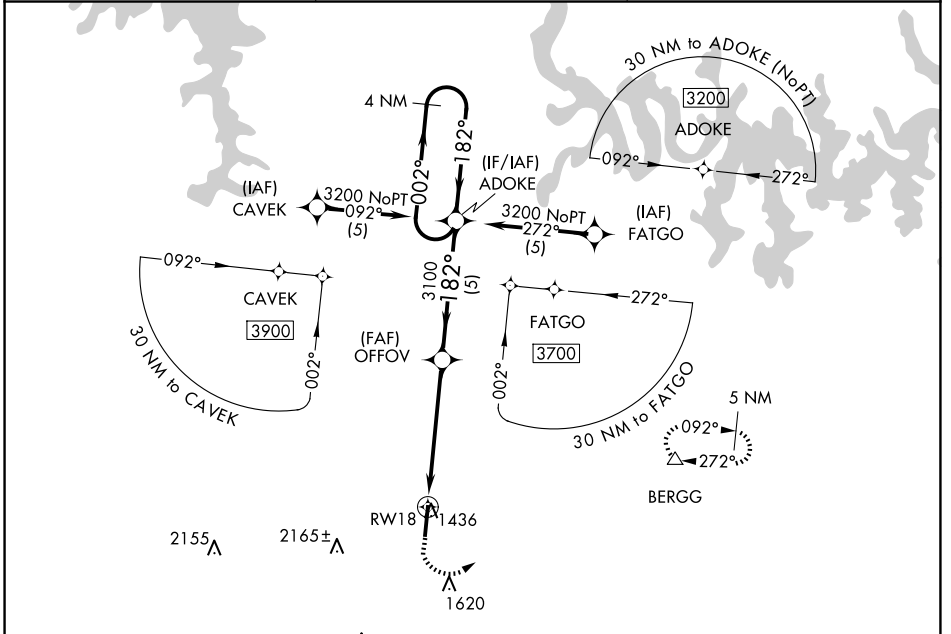


APP CRS	Rwy ldg	<b>6161</b>
<b>182°</b>	TDZE	<b>1365</b>
	Apt Elev	<b>1365</b>

# RNAV (GPS) RWY 18

BOONE COUNTY (HRO)

RNP APCH.		MISSED APPROACH: Climb to 1800 then climbing left turn to 3200 direct BERGG and hold.
Rwy 18 helicopter visibility reduction below 3/4 SM NA.		
ASOS	MEMPHIS CENTER	UNICOM
<b>121.125</b>	<b>126.85 281.55</b>	<b>123.0 (CTAF) ①</b>



CATEGORY	A	B	C	D
LNAV MDA	1720-1 355 (400-1)			
CIRCLING	1840-1 475 (500-1)	1860-1 495 (500-1)	2340-3 975 (1000-3)	2560-3 1195 (1200-3)

HRL Rwy 18-36 ①  
REIL Rwy 18 ①

SC-1, 15 MAY 2025 to 12 JUN 2025

SC-1, 15 MAY 2025 to 12 JUN 2025