

APP CRS	Rwy Idg	4504
271°	TDZE	481
	Apt Elev	481

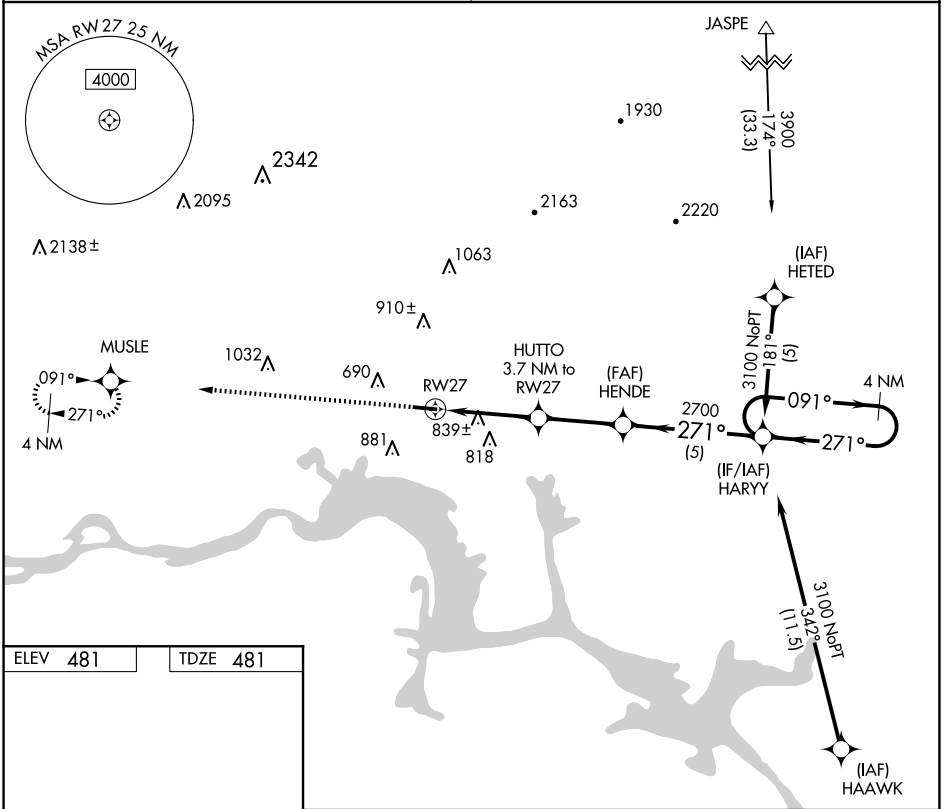
RNAV (GPS) RWY 27

CLARKSVILLE MUNI (H35)

NA Use Russellville Rgnl altimeter setting; if not received, use Fort Smith Rgnl altimeter setting and increase all MDAs 60 feet. DME/DME RNP-0.3 NA. Procedure NA at night. Rwy 27 helicopter visibility reduction below 1 SM NA.

MISSED APPROACH: Climb to 3400 direct MUSLE WP and hold.

MEMPHIS CENTER 128.475 377.15	UNICOM 122.8 (CTAF)
---	-------------------------------



ELEV 481	TDZE 481	Visual Segment - Obstacles.			
		<p>HARRY 4 NM Holding Pattern</p>			
MIRL Rwy 9-27		3400	MUSLE		
		<p>HUTTO 3.7 NM to RWY 27</p> <p>HENDE</p> <p>HARRY</p> <p>091° → 3100</p> <p>← 271°</p>			
		<p>3.7 NM 3 NM 5 NM</p>			
CATEGORY	A	B	C	D	
LNAV MDA	1160-1	679 (700-1)	NA		
CIRCLING	1220-1	1240-1¼	NA		
	739 (800-1)	759 (800-1¼)			

SC-1, 15 MAY 2025 to 12 JUN 2025

SC-1, 15 MAY 2025 to 12 JUN 2025