

GUTHRIE, OKLAHOMA

AL-5950 (FAA)

24305

WAAS CH <b>56607</b> <b>W34A</b>	APP CRS <b>338°</b>	Rwy Idg TDZE Apt Elev	<b>5001</b> <b>1069</b> <b>1069</b>
--	------------------------	-----------------------------	---

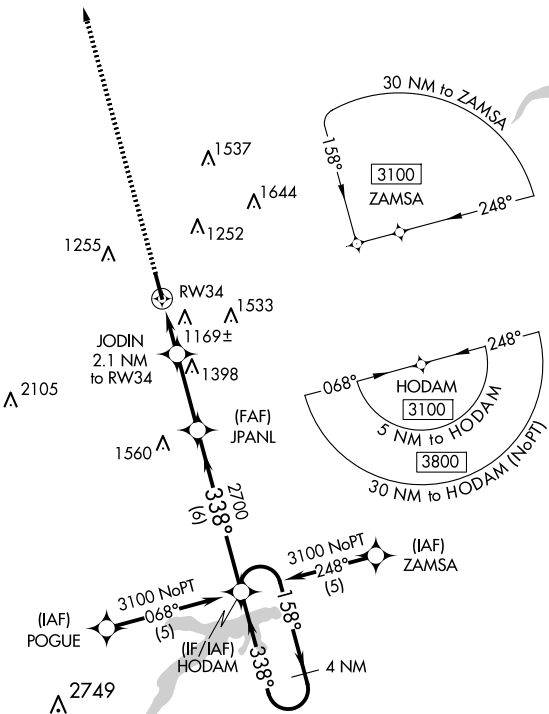
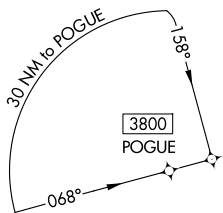
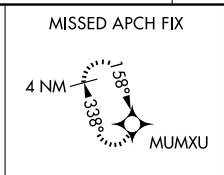
# RNAV (GPS) RWY 34

GUTHRIE/EDMOND RGNL (GOK)

**⚠** DME/DME RNP-0.3 NA. VDP NA when using OKC Will Rogers Intl altimeter setting.  
**⚠** When local altimeter setting not received, use OKC Will Rogers Intl altimeter setting and increase DA/MDA 100 feet and LPV all Cats visibility 1/4 mile.

MISSED APPROACH: Climb to 3100 direct MUMXU and hold.

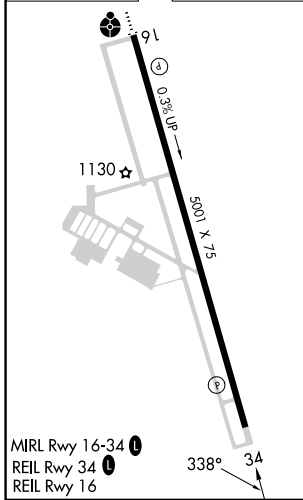
ASOS <b>133.975</b>	OKE CITY APP CON <b>124.2 336.4</b>	UNICOM <b>122.8</b> (CTAF) <b>📻</b>
------------------------	--	--



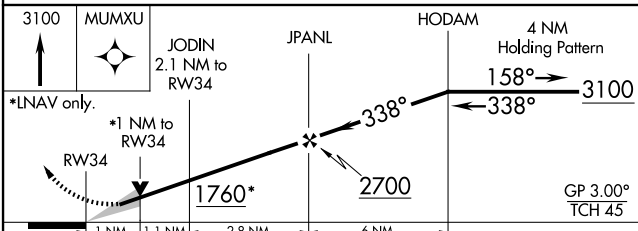
SC-1, 15 MAY 2025 to 12 JUN 2025

SC-1, 15 MAY 2025 to 12 JUN 2025

ELEV 1069	TDZE 1069
-----------	-----------



MIRL Rwy 16-34 **📻**  
 REIL Rwy 34 **📻**  
 REIL Rwy 16



CATEGORY	A	B	C	D
LPV DA	1319-1	250 (300-1)		NA
LNAV MDA	1420-1	351 (400-1)		NA
CIRCLING	1540-1 471 (500-1)	1560-1 491 (500-1)		NA

GUTHRIE, OKLAHOMA  
 Amdt 1A 16JUN22

35°51'N-97°25'W

# GUTHRIE/EDMOND RGNL (GOK)

## RNAV (GPS) RWY 34