

WAAS CH 50330 W34A	APP CRS 347°	Rwy Idg TDZE 1241 Apt Elev 1252
--	------------------------	---

RNAV (GPS) RWY 34

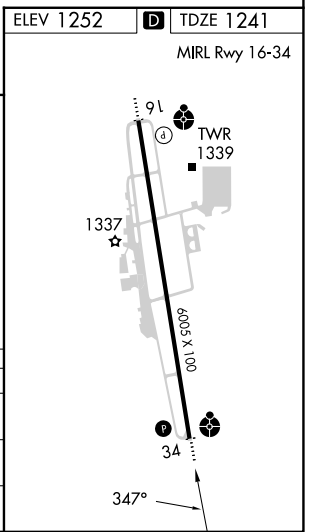
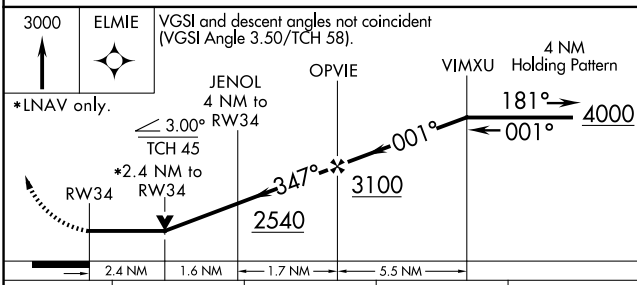
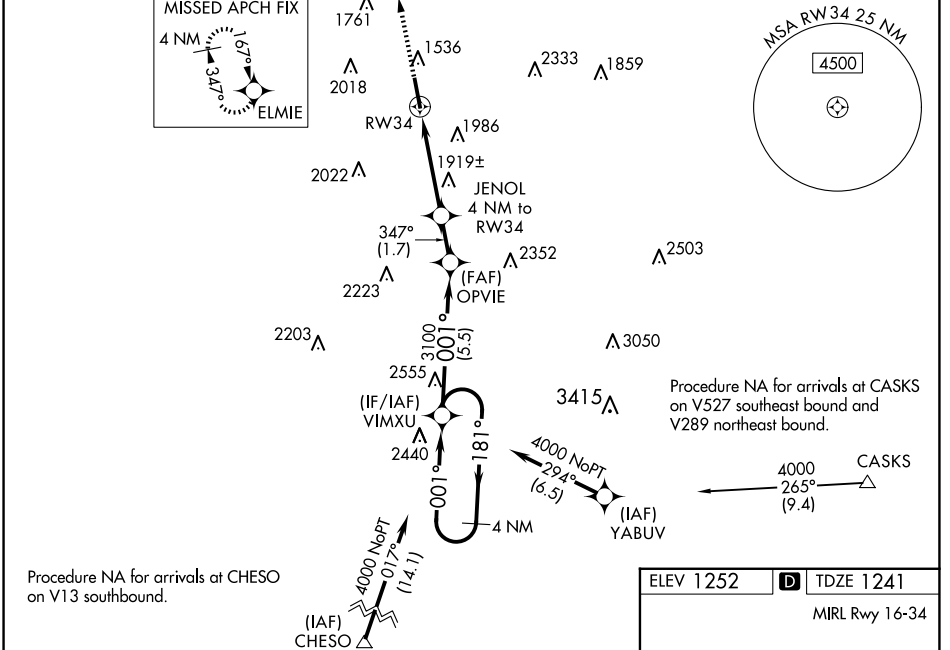
DRAKE FLD (FYV)

⚠ Inop table does not apply to LP Cat A and LP/LNAV Cat C and D. For inop ODALS when using Springdale altimeter setting, increase LNAV Cat C and D visibility to 3 miles. Circling NA east of Rwy 16-34. DME/DME RNP-0.3 NA. Helicopter visibility reduction below 3/4 SM NA. VDP NA with Springdale altimeter setting. When local altimeter setting not received, use Springdale altimeter setting and increase all MDA 40 feet. Increase LNAV Cat B and Circling Cat B and C visibility 1/4 mile.



MISSED APPROACH:
Climb to 3000 direct ELMIE and hold.

ATIS 119.575	RAZORBACK APP CON* 121.0 244.575	DRAKE TOWER* 128.0(CTAF) 371.9	GND CON 121.8	UNICOM 122.95
------------------------	--	--	-------------------------	-------------------------



CATEGORY	A	B	C	D
LP MDA	2120-1	879 (900-1)	2120-2½	879 (900-2½)
LNAV MDA	2180-1	939 (1000-1)	2180-2½	939 (1000-2½)
C CIRCLING	2180-1¼	928 (1000-1¼)	2320-3 1068 (1100-3)	2340-3 1088 (1100-3)

SC-1, 15 MAY 2025 to 12 JUN 2025

SC-1, 15 MAY 2025 to 12 JUN 2025