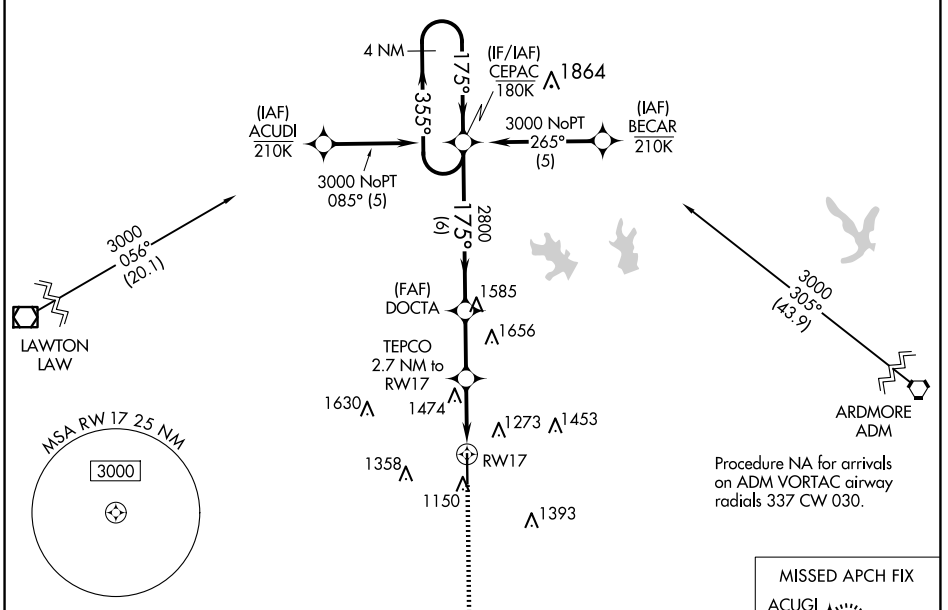


| | | |
|--|------------------------|---|
| WAAS CH 93619 W17A | APP CRS 175° | Rwy Idg 6325 TDZE 1114 Apt Elev 1114 |
|--|------------------------|---|

RNAV (GPS) RWY 17

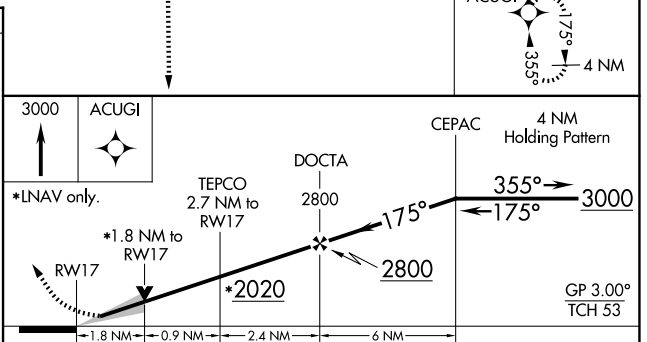
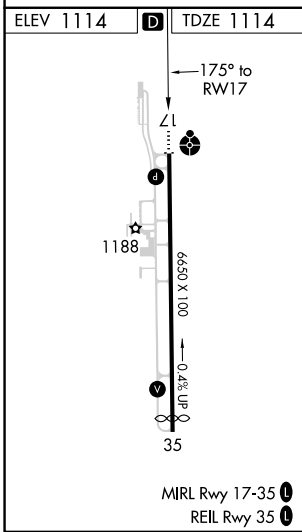
HALLIBURTON FLD (DUC)

| | | | |
|---|---|--------------------------|--|
| RNP APCH. For uncompensated Baro-VNAV systems, LNAV/VNAV NA below -17°C or above 54°C. Inop table does not apply to LPV all Cats, LNAV/VNAV all Cats, LNAV Cats C/D. | | ODALS | MISSED APPROACH: Climb to 3000 direct ACUGI and hold. |
| AWOS-3 119.075 | FORT SILL APP CON 118.6 290.375 | CLNC DEL 118.4 | UNICOM 122.8 (CTAF) 0 |



SC-1, 15 MAY 2025 to 12 JUN 2025

SC-1, 15 MAY 2025 to 12 JUN 2025



| CATEGORY | A | B | C | D |
|-----------------|----------|---------------|-------------------------------|-----------------------|
| LPV DA | | 1314-3/4 | 200 (200-3/4) | |
| LNAV/VNAV DA | | 1806-2 1/2 | 692 (700-2 1/2) | |
| LNAV MDA | 1740-3/4 | 626 (700-3/4) | 1740-1 3/4 | 626 (700-1 3/4) |
| CIRCLING | 1740-1 | 626 (700-1) | 1780-1 3/4 666 (700-1 3/4) | 1780-2 666 (700-2) |