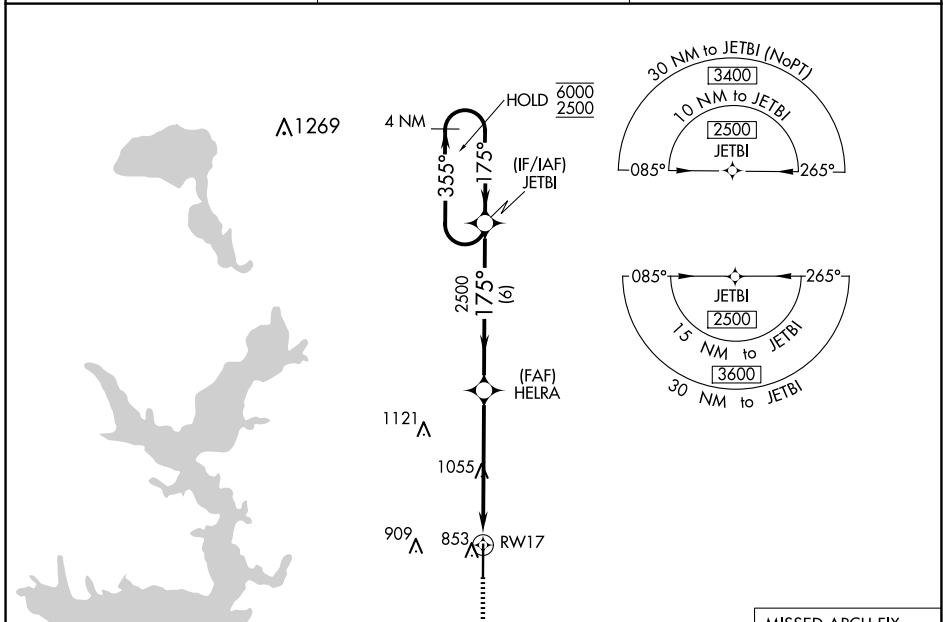


WAAS CH 99518 W17A	APP CRS 175°	Rwy Idg TDZE 6800 699 Apt Elev 699
--	------------------------	--

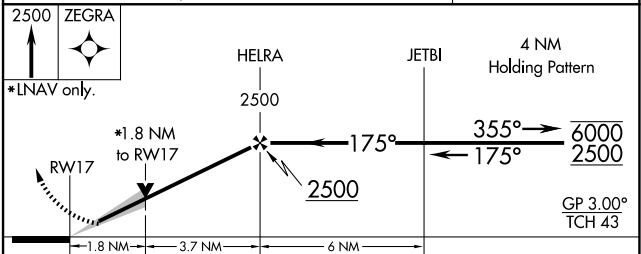
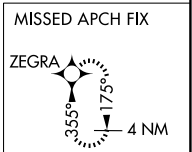
RNAV (GPS) RWY 17

DURANT RGNL/EAKER FLD (DUA)

RNP APCH.	ODALS	MISSED APPROACH: Climb to 2500 direct ZEGRA and hold.
<p>⚠ Inop table does not apply to LPV and LNAV Cat C. For uncompensated Baro-VNAV systems, LNAV/VNAV NA below -16°C or above 54°C. For inop ALS, increase LNAV/VNAV Cat A/B visibility to 1 1/4 SM.</p>		
AWOS-3 124.175	FORT WORTH CENTER 124.75 323.0	UNICOM 123.05 (CTAF) 0



ELEV 699	TDZE 699
<p>175° to RWY 17</p> <p>Z I</p> <p>001 X 0089</p> <p>6800</p> <p>35</p>	



CATEGORY	A	B	C	D
LPV DA		899-3/4	200 (200-3/4)	NA
LNAV/VNAV DA		1133-1 1/8	434 (500-1 1/8)	NA
LNAV MDA	1320-3/4	621 (700-3/4)	1320-1 3/4	621 (700-1 3/4)

SC-1, 15 MAY 2025 to 12 JUN 2025

SC-1, 15 MAY 2025 to 12 JUN 2025