

| | | |
|--|------------------------|--|
| WAAS CH 58306 W18A | APP CRS 181° | Rwy ldg 11602 TDZE 250 Apt Elev 254 |
|--|------------------------|--|

RNAV (GPS) RWY 18

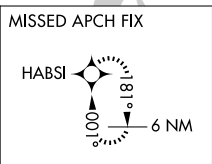
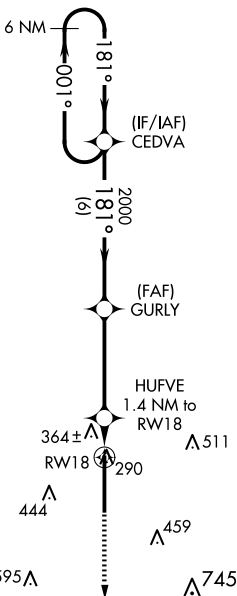
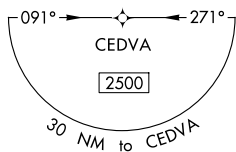
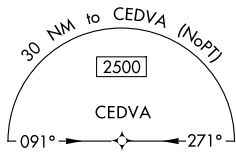
ARKANSAS INTL (BYH)

▽ Inop table does not apply. Baro-VNAV NA when using Blytheville Muni altimeter setting. For uncompensated Baro-VNAV systems, LNAV/VNAV NA below -1.5°C (5°F) or above 54°C (130°F). Circling NA east of Rwy 18-36. DME/DME RNP-0.3 NA. Obtain local altimeter setting on CTAF; when not received, use Blytheville Muni altimeter setting and increase all DA 14 feet and all MDA 20 feet. Increase LNAV/VNAV all Cats and LNAV Cats C/D visibility 1/8 mile.

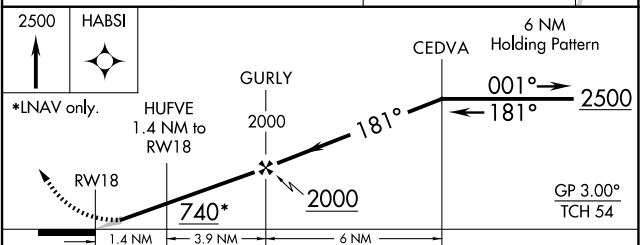
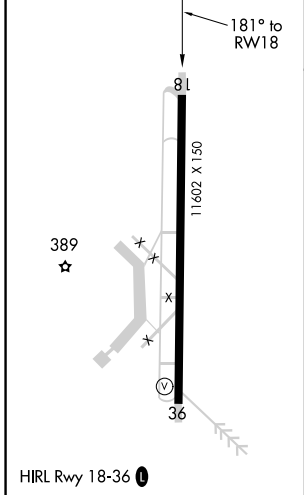
MISSED APPROACH: Climb to 2500 direct HABS1 and hold.

MEMPHIS CENTER
134.65 316.15

UNICOM
122.7 (CTAF) 0



| | |
|----------|----------|
| ELEV 254 | TDZE 250 |
|----------|----------|



| CATEGORY | A | B | C | D |
|-------------------|----------------------|----------------------|------------------------------|----------------------|
| LPV DA | | 450-3/4 | 200 (200-3/4) | |
| LNAV/VNAV DA | | 545-1 | 295 (300-1) | |
| LNAV MDA | | 620-1 | 370 (400-1) | |
| C CIRCLING | 700-1 446 (500-1) | 720-1 466 (500-1) | 800-1 1/2 546 (600-1 1/2) | 820-2 566 (600-2) |

SC-1, 15 MAY 2025 to 12 JUN 2025

SC-1, 15 MAY 2025 to 12 JUN 2025