

WAAS CH 61337 W36A	APP CRS 356°	Rwy Idg TDZE Apt Elev	5001 1471 1477
--	------------------------	-----------------------------	---

RNAV (GPS) RWY 36

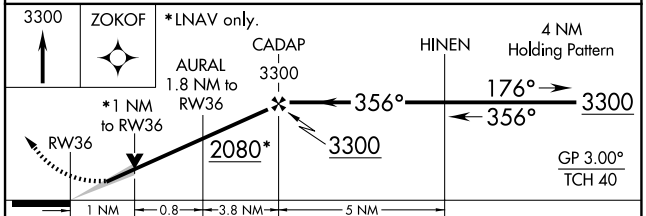
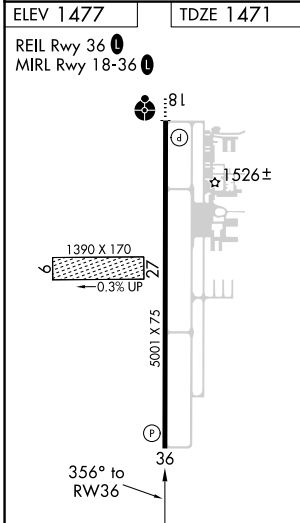
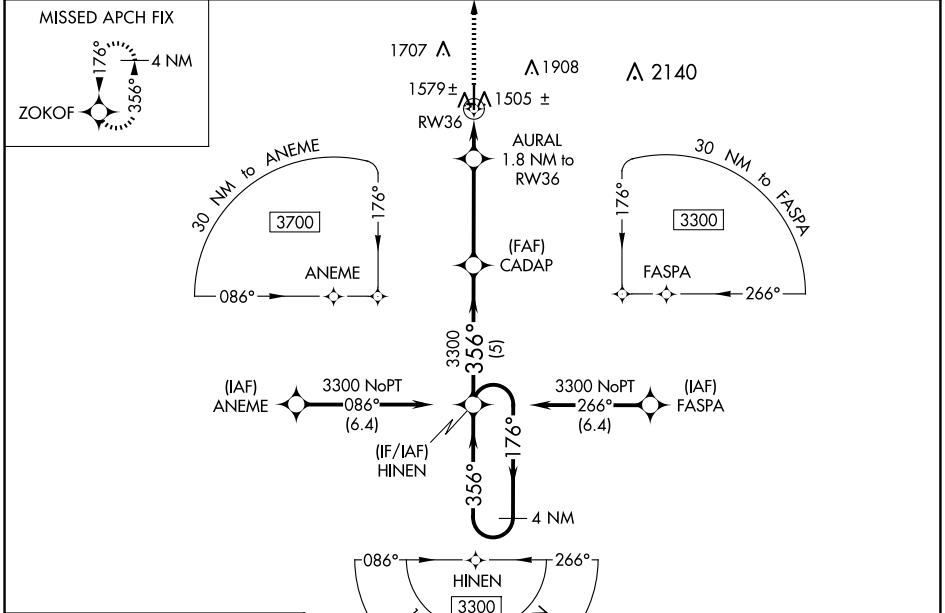
ALVA RGNL (AVK)

RNP APCH-GPS

For uncompensated Baro-VNAV systems, LNAV/VNAV NA below -17°C (2°F) or above 54°C (130°F). When local altimeter setting not received, use Vance AFB altimeter setting and increase all DA 127 feet and all MDA 140 feet; increase LPV all Cats, LNAV/VNAV all Cats and LNAV Cat C visibility 3/8 mile and Circling Cat C visibility 1/2 mile. Baro-VNAV and VDP NA when using Vance AFB altimeter setting. Circling to Rwy 9/27 NA.

MISSED APPROACH:
Climb to 3300 direct
ZOKOF and hold.

AWOS-3PT 121.125	VANCE APP CON * 126.75 346.325	UNICOM 122.8 (CTAF)
----------------------------	--	-------------------------------



CATEGORY	A	B	C	D
LPV DA	1721-7/8	250 (300-7/8)		NA
LNAV/VNAV DA	1751-1	280 (300-1)		NA
LNAV MDA	1840-1	369 (400-1)		NA
<input checked="" type="checkbox"/> CIRCLING	1980-1 503 (600-1)	2120-1 643 (700-1)	2220-2 1/4 743 (800-2 1/4)	NA