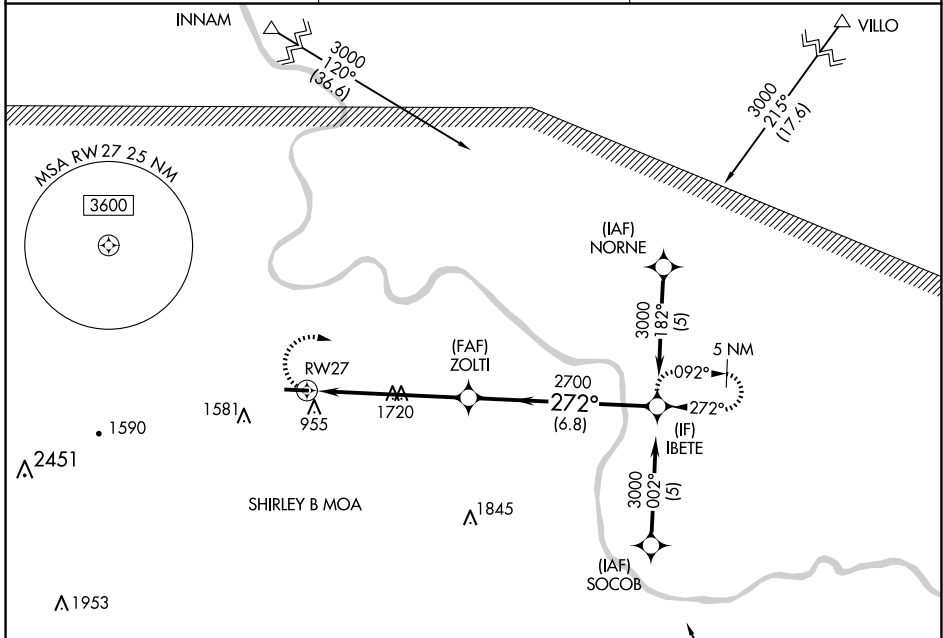


APP CRS <b>272°</b>	Rwy Idg <b>4502</b>
	TDZE <b>796</b>
	Apt Elev <b>805</b>

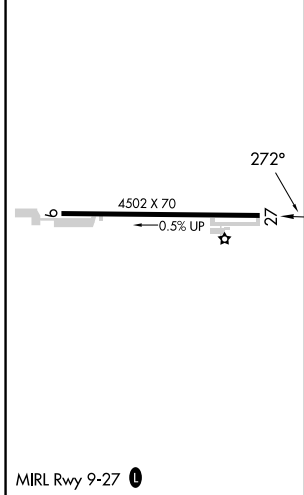
# RNAV (GPS) RWY 27

MOUNTAIN VIEW WILCOX MEML FLD (7M2)

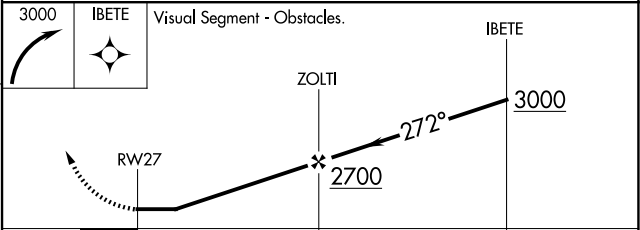
<p><b>NA</b> DME/DME RNP-0.3 NA. Rwy 27 helicopter visibility reduction below 1 SM NA. Procedure NA at night. Use Fltplan altimeter setting; if not received, use Batesville altimeter setting and increase all MDAs 20 feet.</p>	<p>MISSED APPROACH: Climbing right turn to 3000 direct IBETE and hold.</p>	
<p>FLP AWOS-3 <b>132.075</b></p>	<p>MEMPHIS CENTER <b>126.85 281.55</b></p>	<p>UNICOM <b>122.7 (CTAF)</b></p>



ELEV 805	TDZE 796
----------	----------



Procedure NA for arrivals at UKORE on V305 southwest bound.



CATEGORY	A	B	C	D
LNAV MDA	2120-1¼ 1324 (1400-1¼)	2120-1½ 1324 (1400-1½)	2120-3 1324 (1400-3)	NA
CIRCLING	2120-1¼ 1315 (1400-1¼)	2120-1½ 1315 (1400-1½)	2120-3 1315 (1400-3)	NA

SC-1, 15 MAY 2025 to 12 JUN 2025

SC-1, 15 MAY 2025 to 12 JUN 2025