


APP CRS	Rwy Idg	6500
349°	TDZE	96
	Apt Elev	153

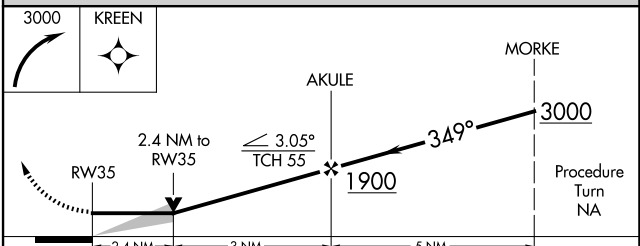
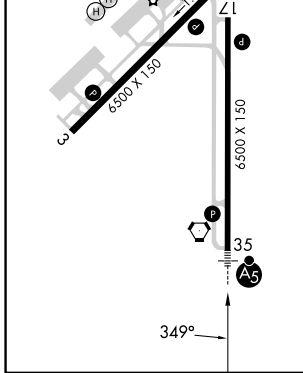
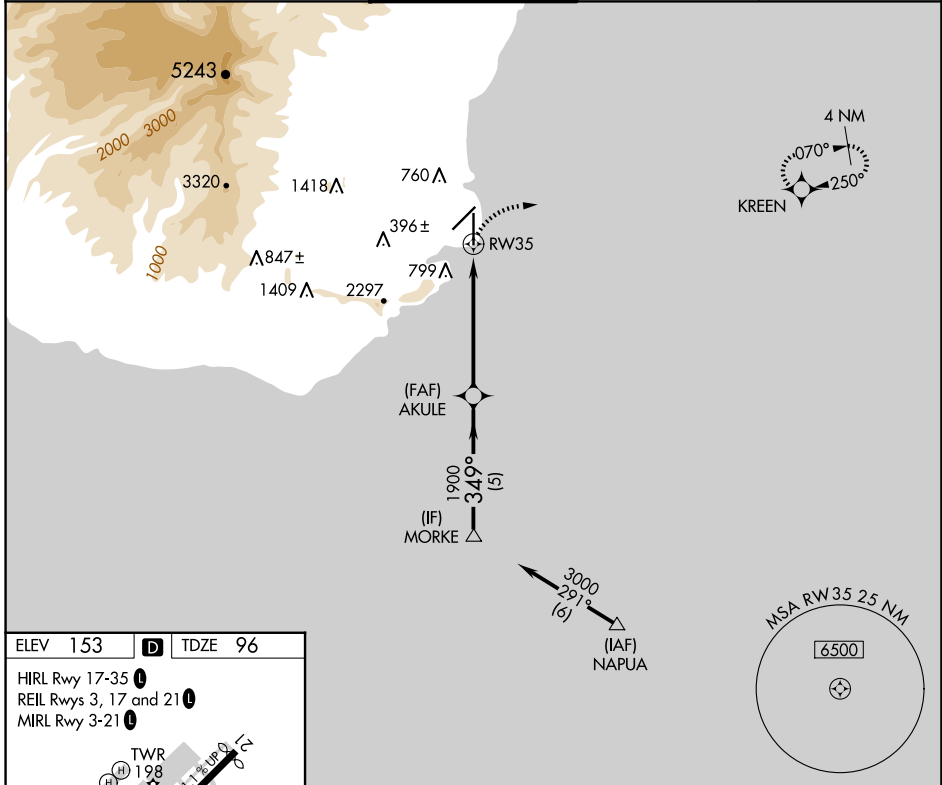
RNAV (GPS) Y RWY 35

LIHUE (LIH)(PHLI)

⚠ For inoperative MALSR, increase LNAV Cat A visibility to 1 mile and Cat E to 3 miles. Circling NA west of Rwy 17-35. Circling NA at night. DME/DME RNP-0.3 NA.

MALSR

MISSED APPROACH: Climbing right turn to 3000 direct KREEN WP and hold.

ATIS 127.2	HCF CENTER 126.5 269.4	LIHUE TOWER ★ 118.9 (CTAF) 263.1	GND CON 121.9	CLNC DEL 126.5 269.4 (When twr closed)
----------------------	----------------------------------	--	-------------------------	---



CATEGORY	A	B	C	D	E
LNAV MDA	920- ³ / ₄	824 (800- ³ / ₄)	920-2 824 (800-2)	920-2 ¹ / ₄ 824 (800-2 ¹ / ₄)	920-2 ¹ / ₂ 824 (800-2 ¹ / ₂)
CIRCLING	920-1 767 (800-1)	920-1 ¹ / ₄ 767 (800-1 ¹ / ₄)	920-2 ¹ / ₄ 767 (800-2 ¹ / ₄)	920-2 ¹ / ₂ 767 (800-2 ¹ / ₂)	NA

PAC, 17 APR 2025 to 12 JUN 2025

PAC, 17 APR 2025 to 12 JUN 2025