

WAAS CH 86333 W09A	APP CRS 095°	Rwy Idg TDZE Apt Elev	5200 4086 4094
--	------------------------	-----------------------------	---

RNAV (GPS) RWY 9

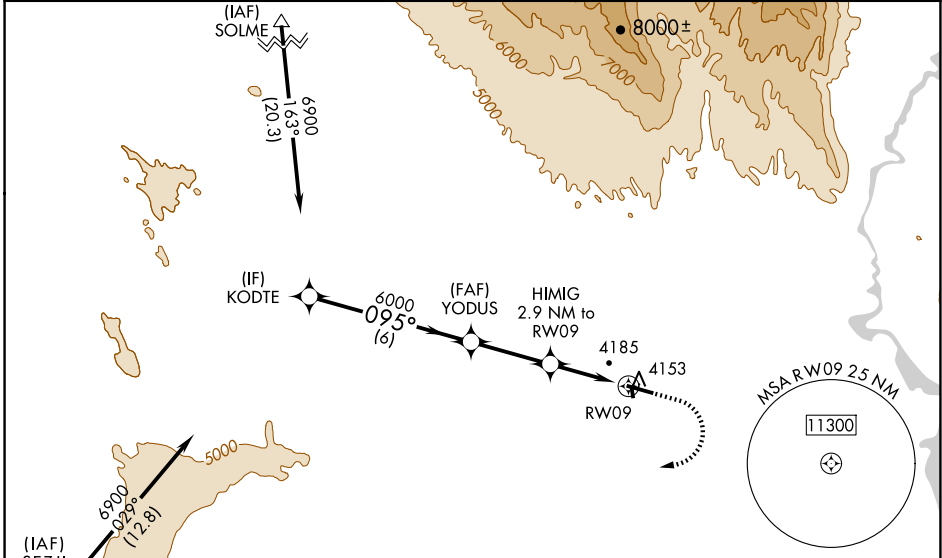
NORTH BIG HORN COUNTY (U68)

RNP APCH - GPS

Baro-VNAV NA when using Greybull altimeter setting. For uncompensated Baro-VNAV systems, LNAV/VNAV NA below -23°C or above 49°C. When Rwy 9 VGSI inop, Straight-in and Circling minimums NA at night. Helicopter visibility reduction below 1 SM NA. When local altimeter setting not received, use Greybull altimeter setting and increase all DA 87 feet and all LPV and LNAV/VNAV visibility 1/8 mile, increase all MDA 100 feet and LNAV Cats C/D visibility 3/8 mile and increase Circling Cat C visibility 1/4 mile. Circling NA to Rwy 16 and 34.

MISSED APPROACH: Climb to 4600 then climbing right turn to 8500 direct SEZJI and hold.

AWOS-3 119.925	SALT LAKE CENTER 133.25 285.6	UNICOM 123.0 (CTAF)
--------------------------	---	-------------------------------



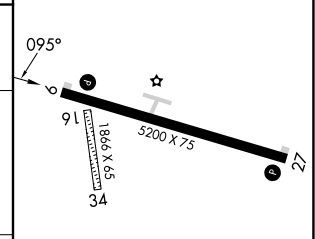
ELEV	4094	TDZE	4086
------	------	------	------

VGSI and RNAV glidepath not coincident (VGSI Angle 3.00/TCH 40).

GP 3.00° TCH 55

* LNAV only.

* 5060



CATEGORY	A	B	C	D
LPV DA		4336-1	250 (300-1)	
LNAV/VNAV DA		4344-1	258 (300-1)	
LNAV MDA		4440-1	354 (400-1)	
CIRCLING	4520-1	4680-1	4940-2 1/2	5260-3
	426 (500-1)	586 (600-1)	846 (900-2 1/2)	1166 (1200-3)

REIL Rwy 9 and 27

MIRL Rwy 9-27

NW-1, 15 MAY 2025 to 12 JUN 2025

NW-1, 15 MAY 2025 to 12 JUN 2025