

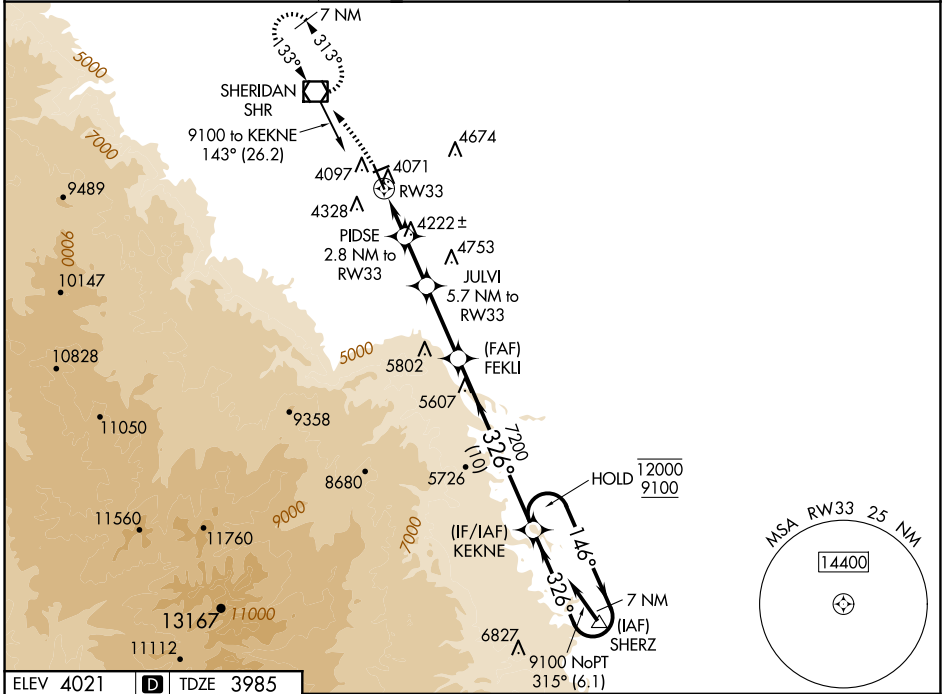
WAAS CH 65699 W33A	APP CRS 326°	Rwy Idg TDZE Apt Elev	8301 3985 4021
--	------------------------	-----------------------------	---

RNAV (GPS) RWY 33

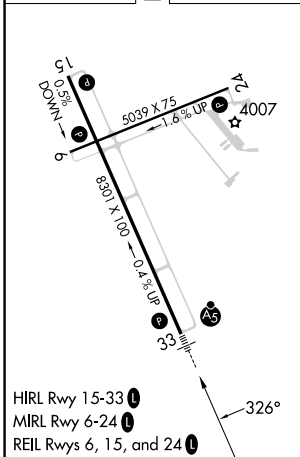
SHERIDAN COUNTY (SHR)

RNP APCH.	MALSR	MISSED APPROACH: Climbing left turn to 7300 direct SHR VOR/DME and hold, continue climb-in-hold to 7300.
Circling to Rwy 24 NA at night. Baro-VNAV NA. When local altimeter setting not received, procedure NA. -19°C		

ASOS 135.175	SALT LAKE CENTER 127.75 351.9	UNICOM 123.0 (CTAF)
------------------------	---	-------------------------------



ELEV 4021		TDZE 3985
-----------	--	-----------



7300	SHR	PIDSE 2.8 NM to RW33	JULVI 5.7 NM to RW33	FEKLI 7200	KEKNE 7 NM Holding Pattern
		*LNAV only	*1.1 NM to RW33		
		4920*	5840*	7200	12000 9100
		1.1	1.7 NM	2.9 NM	4.3 NM
					10 NM
					GP 3.00° TCH 55
CATEGORY	A	B	C	D	
LPV DA	4205-1/2	220 (200-1/2)			
LNAV/VNAV DA	4380-3/4	395 (400-3/4)			
LNAV MDA	4380-1/2	395 (400-1/2)	4380-5/8	395 (400-5/8)	
CIRCLING	4600-1 579 (600-1)	4640-1 619 (700-1)	4860-2 1/2 839 (900-2 1/2)	5220-3 1199 (1200-3)	