

LOC/DME I-SNQ <b>110.3</b> Chan <b>40</b>	APP CRS <b>164°</b>	Rwy Idg <b>11901</b> TDZE <b>432</b> Apt Elev <b>432</b>
---	------------------------	--

# ILS RWY 16L (SA CAT I)

## SEATTLE-TACOMA INTL (SEA)

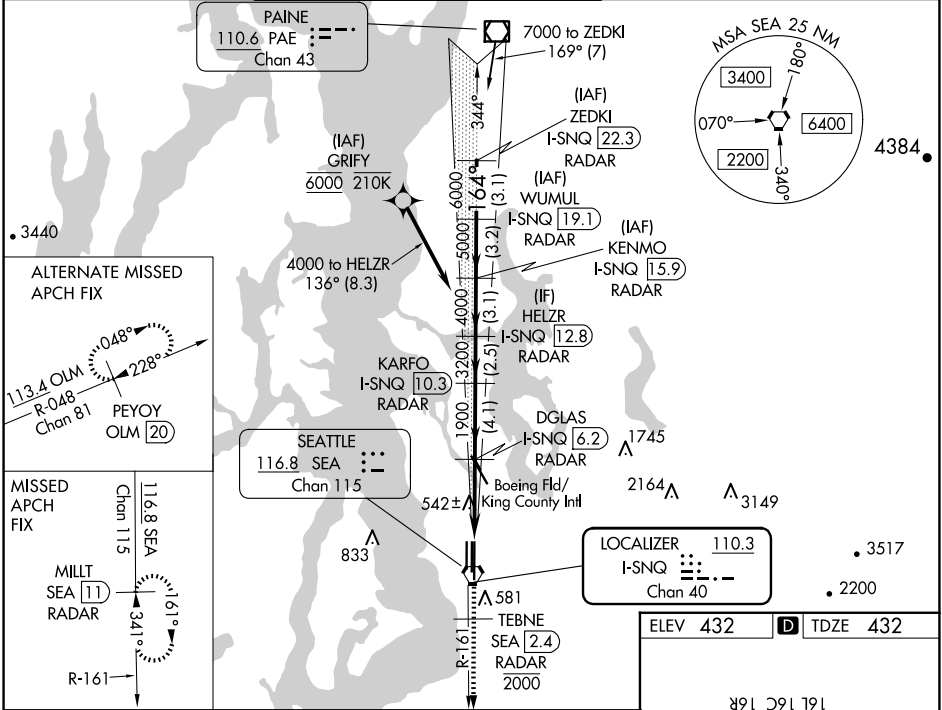
DME or RADAR required. RNP APCH-GPS, from GRIFY.

Simultaneous approach authorized.  
Requires specific OPSPEC, MSPEC, or LOA approval.

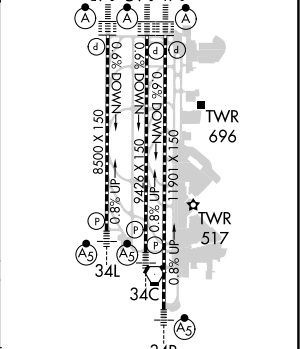
ALSF-2

MISSED APPROACH: Climb to 900 on heading 165° then on SEA VORTAC R-161 to cross TEBNE/SEA 2.4 DME/RADAR at or below 2000 then climb to 5000 on SEA VORTAC R-161 to MILLT/SEA 11 DME/RADAR and hold, continue climb-in-hold to 5000.

D-ATIS <b>118.0</b>	SEATTLE APP CON <b>133.65 273.45</b>	SEATTLE TOWER <b>119.9 239.3</b> (Rwys 16L, 16C, 34C, 34R) <b>120.95 239.3</b> (Rwys 16R, 34L)	GND CON <b>121.7</b>	CLNC DEL <b>128.0</b>	CPDLC
------------------------	---	--	-------------------------	--------------------------	-------



900 hdg 165°	TEBNE SEA 2.4 2000	5000 MILLT SEA 11	VGSI and ILS glidepath not coincident (VGSI Angle 3.00/TCH 76).				
	DGLAS I-SNQ 6.2 RADAR	KARFO I-SNQ 10.3 RADAR	HELZR I-SNQ 12.8 RADAR	KENMO I-SNQ 15.9 RADAR	WUMUL I-SNQ 19.1 RADAR	ZEDKI I-SNQ 22.3 RADAR	
	1900	3200	4000	5000	6000	7000	
	108°	4.4 NM	4.1 NM	2.5 NM	3.1 NM	3.2 NM	3.1 NM
CATEGORY	A	B	C	D			
S-ILS 16L	NA	RA 248/14 150 DA 582					



**SA CATEGORY I ILS - SPECIAL AIRCREW & AIRCRAFT CERTIFICATION REQUIRED**

HIRL all Rwys  
TDZ/CL Rwys 16L, 16C, 16R and 34R

NW-1, 15 MAY 2025 to 12 JUN 2025

NW-1, 15 MAY 2025 to 12 JUN 2025