

WAAS CH <b>65820</b> W05A	APP CRS <b>054°</b>	Rwy ldg TDZE Apt Elev	<b>8801</b> <b>7014</b> <b>7014</b>
---------------------------------	------------------------	-----------------------------	---

# RNAV (GPS) RWY 5

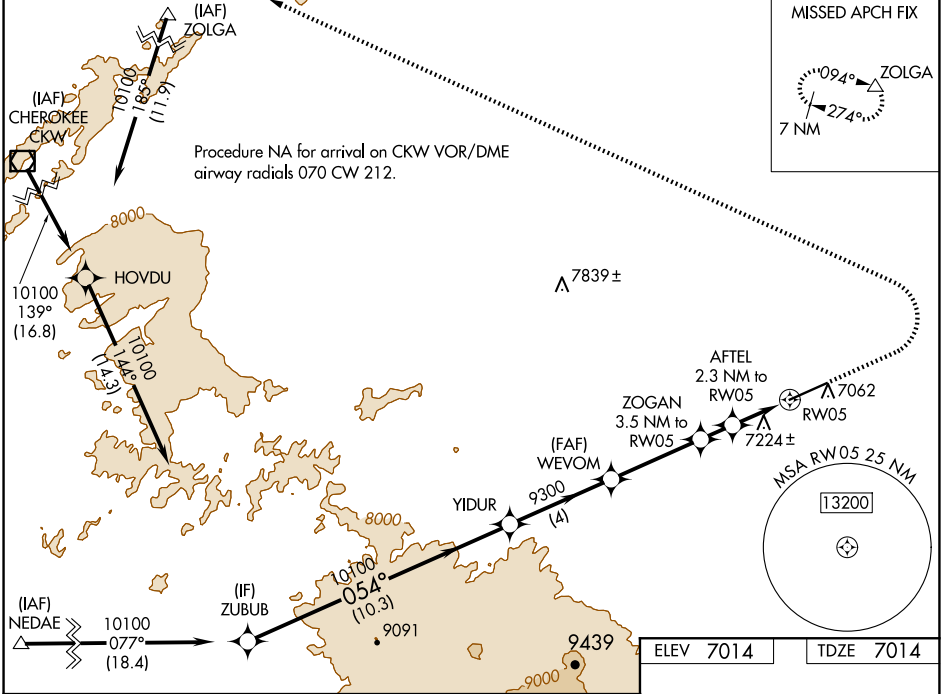
SHIVELY FLD (SAA)

RNP APCH - GPS.

▼ For uncompensated Baro-VNAV systems, LNAV/VNAV NA below -28°C or above 54°C.

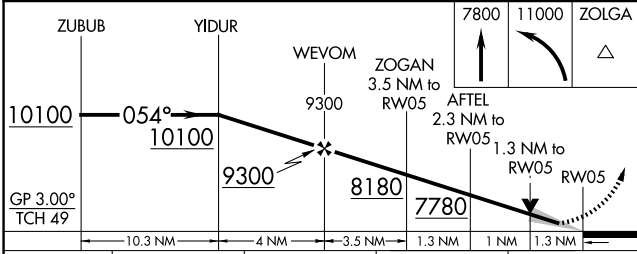
MISSED APPROACH: Climb to 7800 then climbing left turn to 11000 direct ZOLGA and hold.

AWOS-3PT <b>118.175</b>	DENVER CENTER <b>132.1 254.35</b>	UNICOM <b>122.8 (CTAF) 0</b>
----------------------------	--------------------------------------	---------------------------------



NW-1, 15 MAY 2025 to 12 JUN 2025

NW-1, 15 MAY 2025 to 12 JUN 2025



ELEV 7014	TDZE 7014
-----------	-----------

CATEGORY	A	B	C	D
LPV DA		7264- <sup>3</sup> / <sub>4</sub>	250 (300- <sup>3</sup> / <sub>4</sub> )	
LNAV/VNAV DA		7546-1 <sup>1</sup> / <sub>2</sub>	532 (600-1 <sup>1</sup> / <sub>2</sub> )	
LNAV MDA	7480-1	466 (500-1)	7480-1 <sup>3</sup> / <sub>8</sub>	466 (500-1 <sup>3</sup> / <sub>8</sub> )
CIRCLING	7540-1	526 (600-1)	7740-2 726 (800-2)	7860-2 <sup>3</sup> / <sub>4</sub> 846 (900-2 <sup>3</sup> / <sub>4</sub> )

