

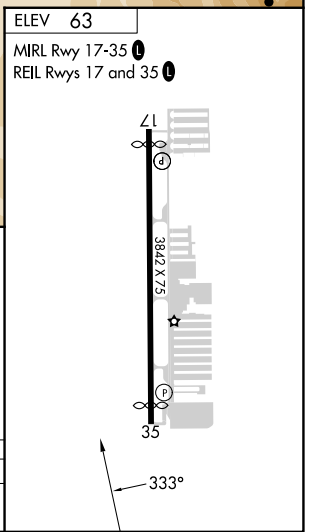
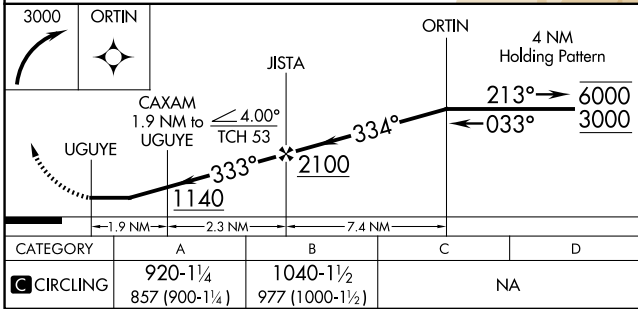
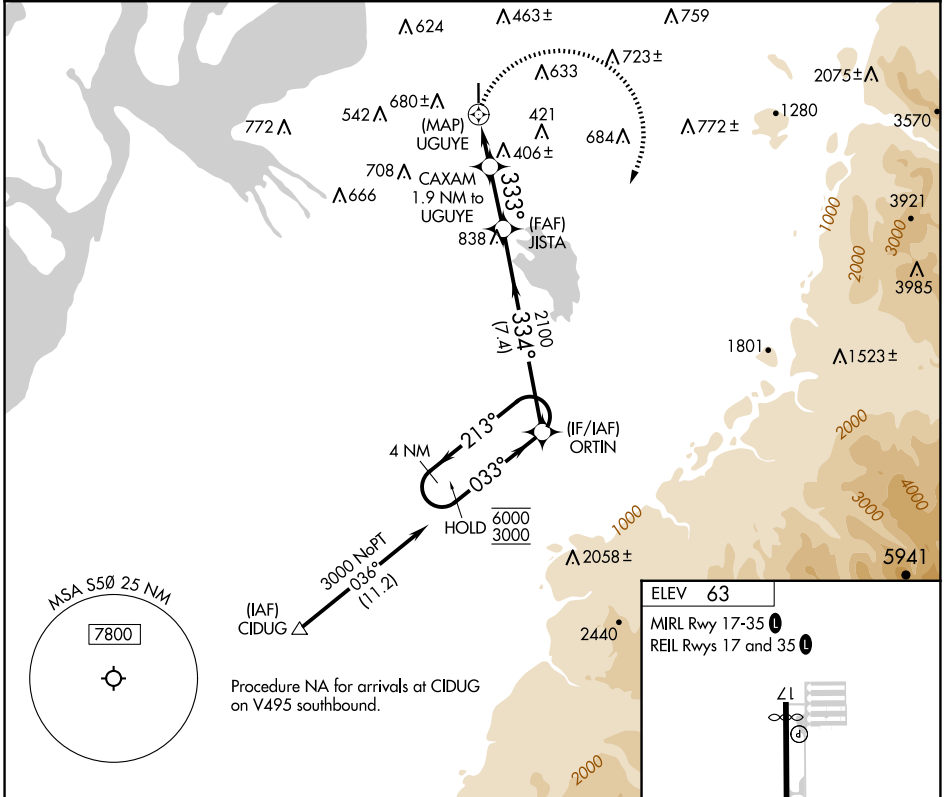
APP CRS	Rwy Idg	N/A
333°	TDZE	N/A
	Apt Elev	63

RNAV (GPS)-A

AUBURN MUNI (S50)

RNP APCH - GPS.	<p>⚠ NA Circling NA west of Rwy 17-35. Rwy 17 and 35 helicopter visibility reduction below 1 SM NA. When Circling to Rwy 17, 35 at night, operational VGSI required, remain on or above VGSI glidepath until threshold. Use Seattle-Tacoma Intl altimeter setting. Procedure NA at night when VGSI inoperative.</p>	<p>⚠ MISSED APPROACH: Climbing right turn to 3000 direct ORTIN and hold.</p>

SEA ASOS 118.0	SEATTLE APP CON 123.85	CLNC DEL 123.85	UNICOM 122.975 (CTAF) Ⓛ
--------------------------	----------------------------------	---------------------------	--



NW-1, 15 MAY 2025 to 12 JUN 2025

NW-1, 15 MAY 2025 to 12 JUN 2025