

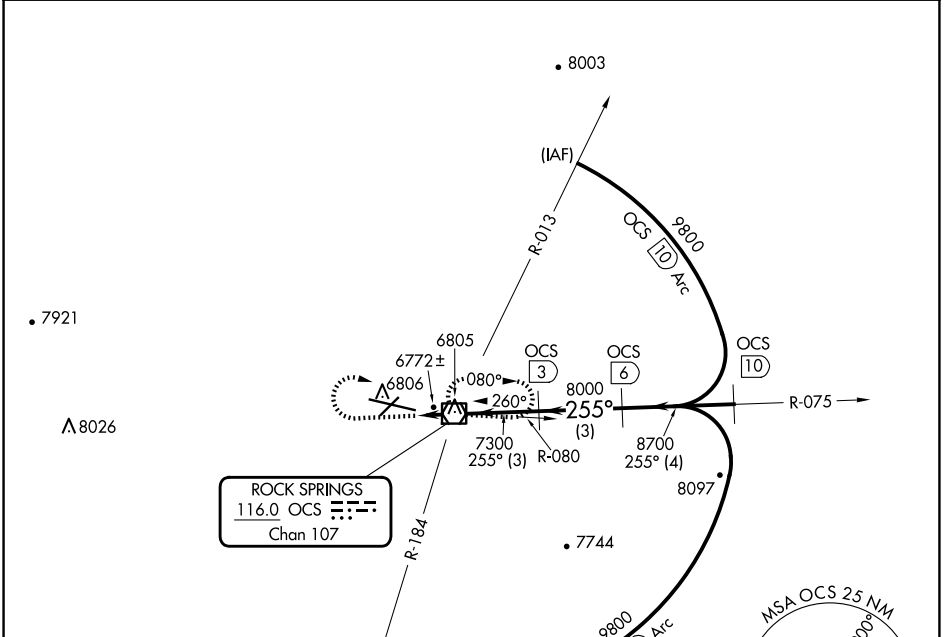
VOR/DME OCS 116.0 Chan 107	APP CRS 255°	Rwy Idg TDZE Apt Elev	10002 6765 6765
--	------------------------	-----------------------------	--

VOR/DME RWY 27

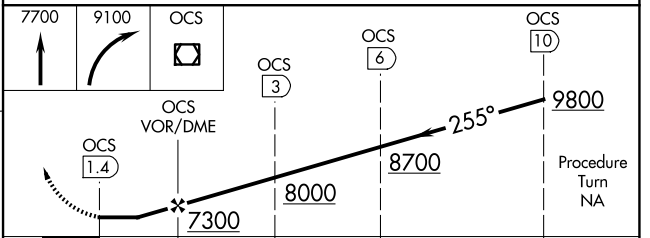
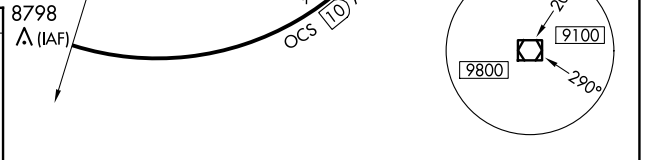
SOUTHWEST WYOMING RGNL (R.K.S)

▼ Inoperative table does not apply to Cat D.	MALSR 	MISSED APPROACH: Climb to 7700, then climbing right turn to 9100 direct OCS VOR/DME and hold.
--	------------------	---

AWOS-3 118.375	SALT LAKE CENTER 124.35 353.5	UNICOM 122.8 (CTAF) ①
--------------------------	---	---------------------------------



ELEV 6765	D	TDZE 6765
-----------	----------	-----------



	1.4 NM	3 NM	3 NM	4 NM
CATEGORY	A	B	C	D
S-27	7040-1/2 275 (300-1/2)			7040-1 275 (300-1)
C CIRCLING	7140-1 375 (400-1)	7220-1 455 (500-1)	7220-1 1/2 455 (500-1 1/2)	NA

MIRL Rwy 3-21
HIRL Rwy 9-27 ①
REIL Rwy 3 and 21 ①

NW-1, 15 MAY 2025 to 12 JUN 2025

NW-1, 15 MAY 2025 to 12 JUN 2025