

LOC/DME I-GPO <b>108.9</b> Chan <b>26</b>	APP CRS <b>209°</b>	Rwy Idg TDZE Apt Elev	<b>6000</b> <b>26</b> <b>31</b>
---	------------------------	-----------------------------	---------------------------------------

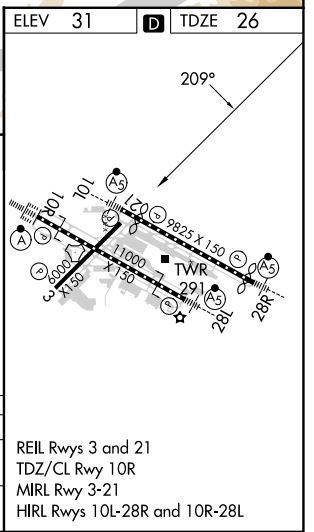
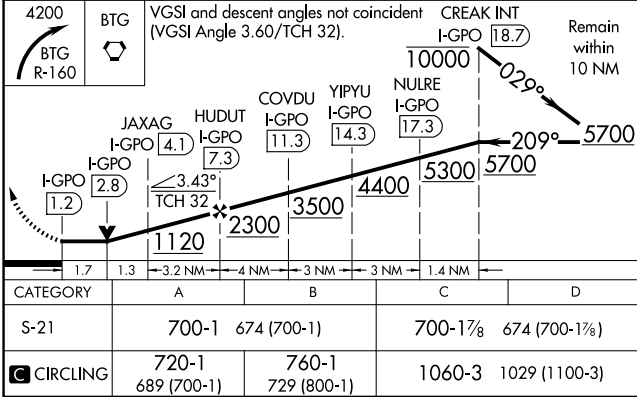
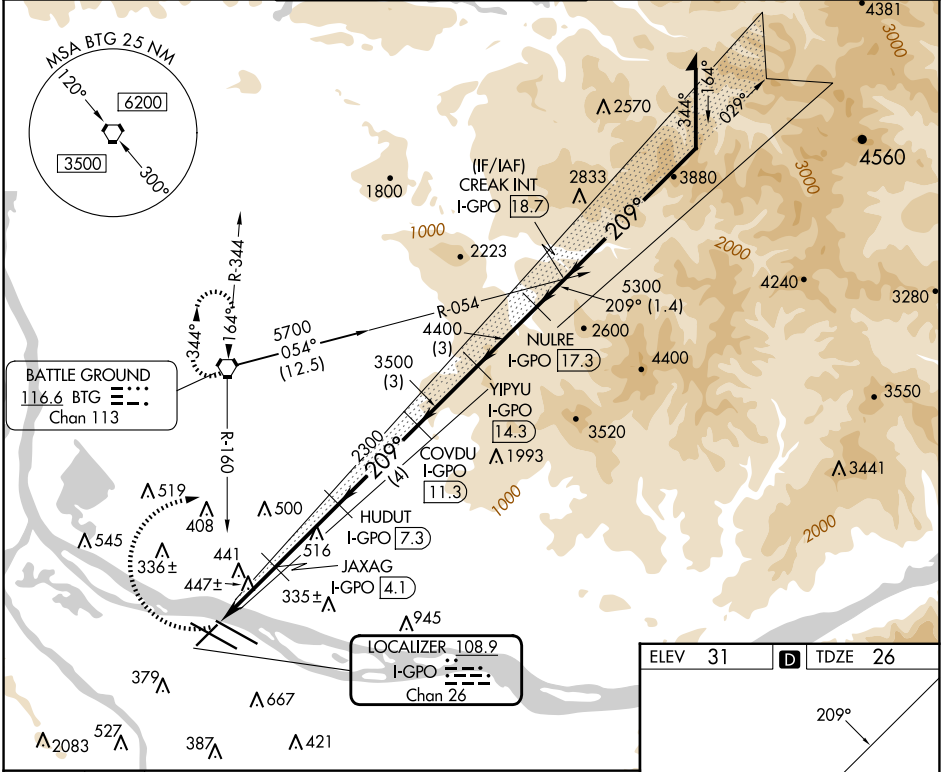
# LOC/DME RWY 21

PORTLAND INTL (PDX)

**⚠** Helicopter visibility reduction below 3/4 SM NA.

**MISSED APPROACH:** Climbing right turn to 4200 on BTG VORTAC R-160 to BTG VORTAC and hold, continue climb-in-hold to 4200.

D-ATIS <b>128.35</b> <b>269.9</b>	PORTLAND APP CON <b>124.35 299.2</b>	PORTLAND TOWER Rwy 10L-28R <b>118.7 257.8</b>	Rwys 3-21, 10R-28L <b>123.775 251.125</b>	GND CON <b>121.9 348.6</b>	CLNC DEL <b>120.125 318.1</b>	CPDLC
---	---	---	--	-------------------------------	----------------------------------	-------



NW-1, 15 MAY 2025 to 12 JUN 2025

NW-1, 15 MAY 2025 to 12 JUN 2025