

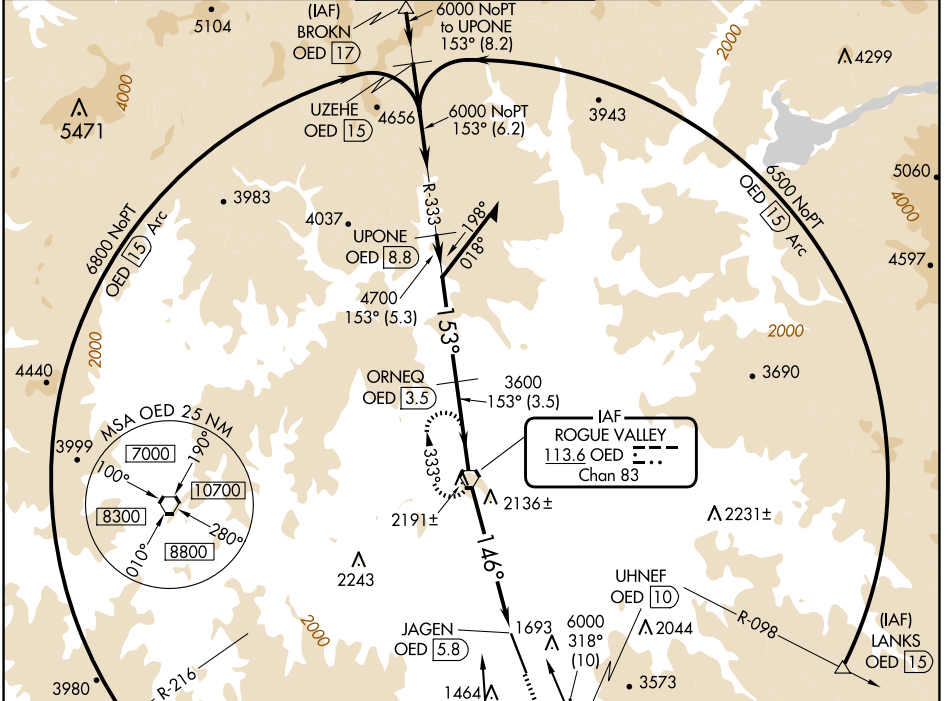
VORTAC OED 113.6 Chan 83	APP CRS 146°	Rwy Idg 8800 TDZE 1303 Apt Elev 1335
--	------------------------	--

VOR/DME RWY 14

ROGUE VALLEY INTL/MEDFORD (MFR)

⚠ Inop table does not apply to S-14 Cat A. For inop ALS increase S-14 Cat B visibility to 1½ SM. Circling NA for Cats C and D northeast of Rwy 14-32.
❄ -3°C
MALSR MISSED APPROACH: Climb to 2900 then climbing right turn to 6400 direct OED VORTAC and hold, continue climb-in-hold to 6400.

ATIS 127.25	CASCADE APP CON * 124.3 379.9	MEDFORD TOWER * 119.4 (CTAF) 0 257.8	GND CON 121.8	UNICOM 122.95
-----------------------	---	--	-------------------------	-------------------------

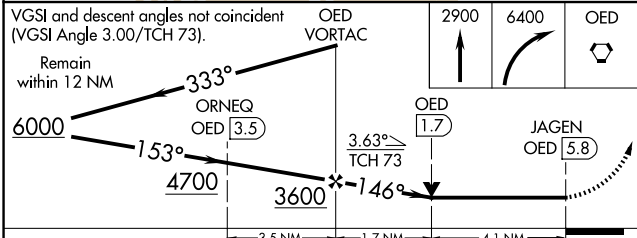
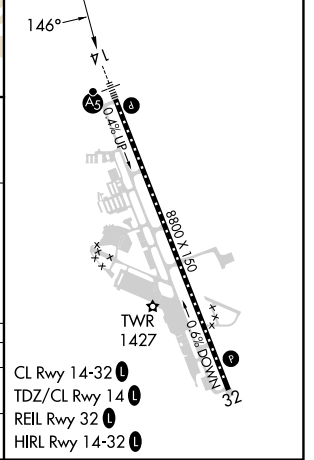


NW-1, 15 MAY 2025 to 12 JUN 2025

NW-1, 15 MAY 2025 to 12 JUN 2025

ELEV 1335	TDZE 1303
-----------	-----------

VGSI and descent angles not coincident (VGSI Angle 3.00/TCH 73).
 Remain within 12 NM
 6000 → 333° → ORNEQ OED 3.5
 4700 → 153° → 3600 → 146° → JAGEN OED 5.8
 3600 → 3.63° TCH 73 → JAGEN OED 5.8
 2900 → 6400 → OED



CATEGORY	A	B	C	D
S-14	2680/60	1377 (1400-1½)	2680-3	1377 (1400-3)
CIRCLING	2680-1¼ 1345 (1400-1¼)	2680-1½ 1345 (1400-1½)	2680-3	1345 (1400-3)

- CL Rwy 14-32
- TDZ/CL Rwy 14
- REIL Rwy 32
- HIRL Rwy 14-32