

WAAS CH <b>99332</b> <b>W35A</b>	APP CRS <b>346°</b>	Rwy Idg TDZE Apt Elev	<b>5318</b> <b>4729</b> <b>4734</b>
--	------------------------	-----------------------------	---

# RNAV (GPS) RWY 35

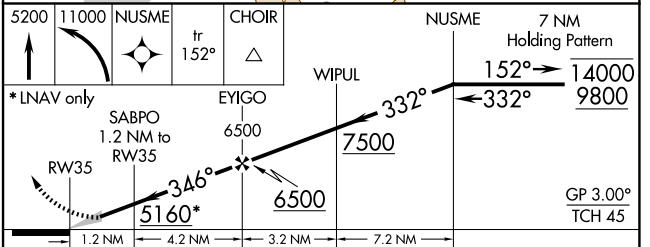
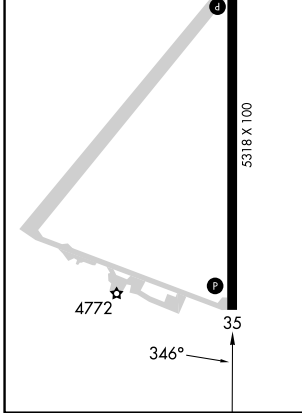
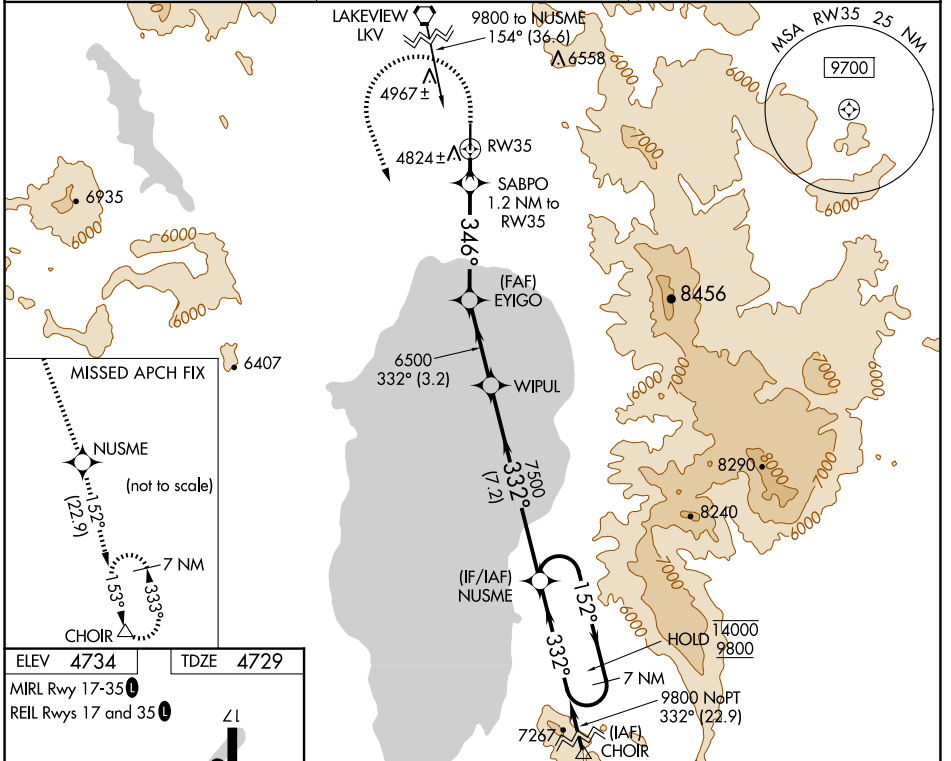
LAKE COUNTY (LKV)

RNP APCH.

**MISSED APPROACH:** (Do not exceed 235K until NUSME) Climb to 5200 then climbing left turn to 11000 direct NUSME and on track 152° to CHOIR and hold.

**For uncompensated Baro-VNAV systems, LNAV/VNAV NA below -24°C or above 50°C. Circling NA east of Rwy 17-35.**

AWOS-3PT <b>135.525</b>	SEATTLE CENTER <b>127.6 346.35</b>	UNICOM <b>122.8 (CTAF) 0</b>
----------------------------	---------------------------------------	---------------------------------



CATEGORY	A	B	C	D
LPV DA	4979-1 250 (300-1)			
LNAV/VNAV DA	5121-1½ 392 (400-1½)			
LNAV MDA	5080-1 351 (400-1)			
CIRCLING	5160-1 426 (500-1)	5220-1 486 (500-1)	5320-2 586 (600-2)	5480-2½ 746 (800-2½)

NW-1, 15 MAY 2025 to 12 JUN 2025

NW-1, 15 MAY 2025 to 12 JUN 2025