



WAAS CH 93532 W17A	APP CRS 166°	Rwy Idg TDZE Apt Elev	5318 4734 4734
----------------------------------------	------------------------	-----------------------------	-------------------------------------------

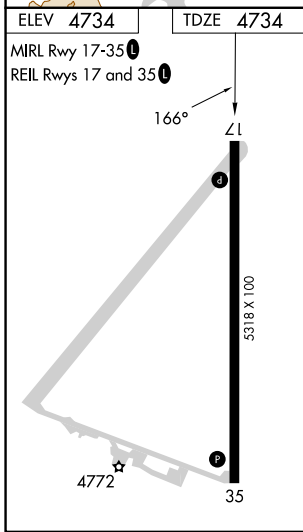
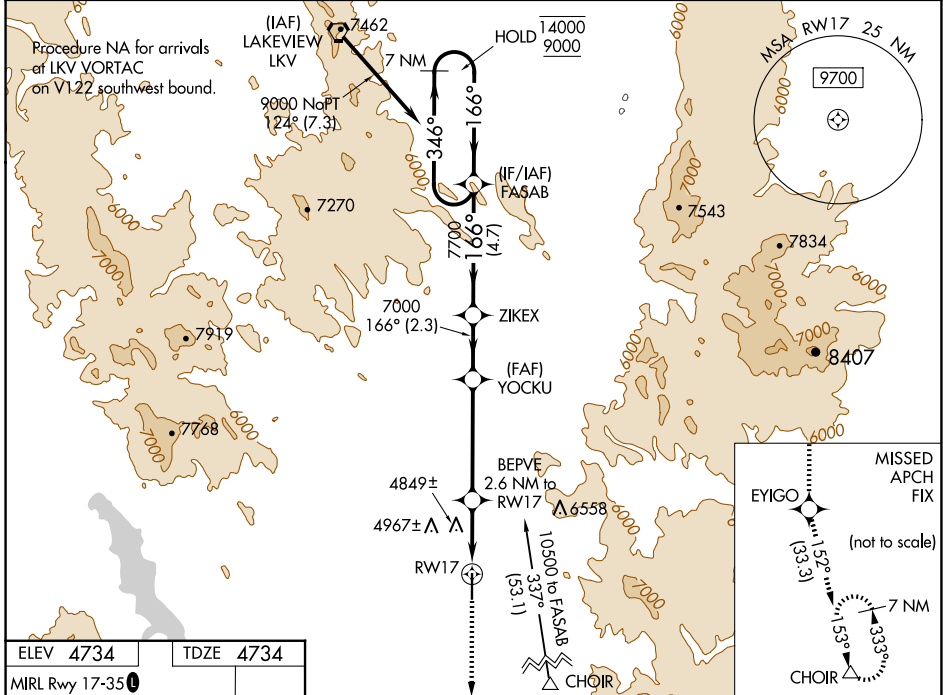
RNAV (GPS) RWY 17


LAKE COUNTY (LKV)

RNP APCH.

 Circling NA east of Rwy 17-35. For uncompensated Baro-VNAV systems, LNAV/VNAV NA below +24°C or above 50°C.
 -26°C

MISSED APPROACH: Climb to 11000 direct EYIGO and on track 152° to CHOIR and hold.

AWOS-3PT 135.525	SEATTLE CENTER 127.6 346.35	UNICOM 122.8 (CTAF) 0
----------------------------	---------------------------------------	---------------------------------



ELEV 4734	TDZE 4734				
MIRL Rwy 17-35	REIL Rwys 17 and 35				
11000	EYIGO	tr 152°	CHOIR	FASAB	7 NM Holding Pattern
*LNAV only.	BEPVE 2.6 NM to RWY17	YOCKU 7000	ZIKEX		
*1 NM to RWY17					
					GP 3.00° TCH 45
	1 NM	1.6 NM	4.3 NM	2.3 NM	4.7 NM
CATEGORY	A	B	C	D	
LPV DA		4984-1	250 (300-1)		
LNAV/VNAV DA		5139-1½	405 (500-1½)		
LNAV MDA		5100-1	366 (400-1)		
 CIRCLING	5160-1 426 (500-1)	5220-1 486 (500-1)	5460-2 726 (800-2)	5500-2½ 766 (800-2½)	

NW-1, 15 MAY 2025 to 12 JUN 2025

NW-1, 15 MAY 2025 to 12 JUN 2025